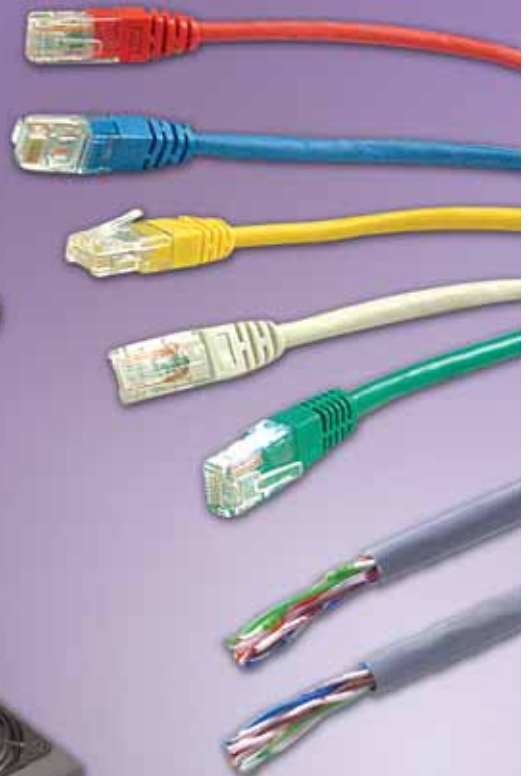


Structured Cabling



Contents

Cables	204
Patch Leads & Accessories	205 - 206
Cable Tester	206
Patch Panels & Face Plates	206
Modules	207
Tools	207
Cabinets	208 - 209
Cabinet Accessories	210



Structured Cabling

CABLES



REXEL SENATE DATA SOLUTIONS

Rexel Senate Data Solutions now offer a full training programme enabling installers to gain Registered Installer Status. Training takes only one day, is run by an experienced professional trainer and covers the following topics:

- Introduction
- History
- Systems Overview
- Design Parameters
- Standards
- Practical Assessment
- Testing and Inspection
- Examination
- Warranty Overview



Included within the day is a 'hands on' training approach, with all equipment and product provided, including a training manual for ongoing reference. Installers will finish with an examination, and on successful completion of this, will become Registered installers.

CABLE

Internal Telephone Cables

Other pairs available - please call for details.

Description	Colour	Ref No.	Code
2 Pair Cable	White	CW130802	9302
3 Pair Cable	White	CW130803	9303
4 Pair Cable	White	CW130804	9304
6 Pair Cable	White	CW130806	9306

Coax Cable (RG59)

Suitable for CCTV, TV, Video and Satellite.

Description	Colour	Ref No.	Code
CCTV Coax	Black	RG59	7012

Cat 5E Cable

Complies with EIA/TIA 568A, ISO11801 and EN50173.

No. of Pairs	Colour	Box Length (m)	Code
--------------	--------	----------------	------

Unscreened Twisted Pair - PVC

4	Grey	305	6001
---	------	-----	------

Unscreened Twisted Pair - LSF

4	Grey	305	6002
4	Violet	305	6003

Foil Screened Twisted Pair

4	Grey	305	6004
---	------	-----	------

Cat 6 Cable

Complies with ISO11801.

No. of Pairs	Colour	Box Length (m)	Code
--------------	--------	----------------	------

Unscreened Twisted Pair - PVC

4	Grey	305	6028
---	------	-----	------

Unscreened Twisted Pair - LSF

4	Violet	305	6027
---	--------	-----	------

Structured Cabling

PATCH LEADS & ACCESSORIES



PATCH LEADS



Patch Leads (CAT5E)

Available in five standard lengths. Moulded boot.

Other lengths / colours are available - please call for details.

Description	Ref No.	Order No. 0004
0.5m		
Patch Lead CAT 5E (Grey)	GGMCAT5E05M	000226
1m		
Patch Lead CAT 5E (Grey)	GGMCAT5E1M	000242
Patch Lead CAT 5E (Blue)	GGMCAT5E1MB	000255
Patch Lead CAT 5E (Yellow)	GGMCAT5E1MJ	000271
Patch Lead CAT 5E (Red)	GGMCAT5E1MR	000284
Patch Lead CAT 5E (Green)	GGMCAT5E1MV	000268
2m		
Patch Lead CAT 5E (Grey)	GGMCAT5E2M	000239
Patch Lead CAT 5E (Blue)	GGMCAT5E2MB	000297
Patch Lead CAT 5E (Yellow)	GGMCAT5E2MJ	000310
Patch Lead CAT 5E (Red)	GGMCAT5E2MR	000323
Patch Lead CAT 5E (Green)	GGMCAT5E2MV	000307
3m		
Patch Lead CAT 5E (Grey)	GGMCAT5E3M	000349
Patch Lead CAT 5E (Blue)	GGMCAT5E3MB	000365
Patch Lead CAT 5E (Yellow)	GGMCAT5E3MJ	000378
Patch Lead CAT 5E (Red)	GGMCAT5E3MR	000352
Patch Lead CAT 5E (Green)	GGMCAT5E3MV	000336
5m		
Patch Lead CAT 5E (Grey)	GGMCAT5E5M	000404
Patch Lead CAT 5E (Blue)	GGMCAT5E5MB	000433

ADAPTORS, COUPLERS & EXTENSIONS



Voice Adaptors

Used to convert RJ45 style structured cabling network outlets to use standard British Telecom style analogue telephone equipment.

Note: Unsuitable for ISDN

Description	Ref No.	Order No. 0004
Voice Adaptor PBX Master	VA-BTM/T	000161
Voice Adaptor Secondary	VA-BTS/T	000174



Consolidation Points / Couplers (CAT5E)

Description	Ref No.	Order No. 0004
Consolidation Point	GGM 6210250U00	000527
Through Connector (RJ45)	GGM 6210909C5E	000530



Telephone Extensions

Description	Ref No.	Order No. 0001
Telephone Extension (3m)	STELEX3	147124
Telephone Extension (5m)	STELEX5	147137
Telephone Extension Reel (10m)	STELEX10	147140

Structured Cabling

CABLE TESTER, PATCH PANELS & FACE PLATES



CABLE TESTER



Lan Cable Tester

A versatile and rugged hand-held tester designed for testing UTP, ScTP and SSTP cables for open / short circuit, reversals, mis-wiring and split pairs. (10BaseT, 100BaseT, RJ45 and RJ11).

Will test T568A, T568B, USOC, 10BaseT and Token Ring configurations.

Easy to read LED display.

Supplied in padded nylon carry case with 9V battery.

Description	Ref No.	Order No.
Lan Cable Tester	GGM DIAGLC90	000569

19" PATCH PANELS



19" CAT5E

Designed to offer performance to the latest CAT5E specifications and providing up to 48 ports in a compact format.

Each panel is supplied with a fixing kit, earthing kit and adhesive label field for individual port identification.

Description	Ref No.	Order No.
16 Way CAT5E UTP Patch Panel	PP-16C5E	000006
24 Way CAT5E UTP Patch Panel	PP-24C5E	000019
48 Way CAT5E UTP Patch Panel	PP-48C5E	000022
Blank Panel 1U	PP-BLANK	000048
Cable Management Bar 1U	PP-CMB1U	000035

MODULAR FACE PLATES



Modular Face Plates

A new range of face plates specifically designed to accommodate our new Gigamedia module range and to match our standard Sector wiring accessories. Available in two sizes, a 2 gang single plate and a 4 gang twin plate.

Description	Ref No.	Order No.
Twin Face plate - (4 Module)	FP-T4S	000077
Single Face plate - (2 Module)	FP-S2S	000080



Sequel

Modular Face Plates

A new range of face plates specifically designed to accommodate our new Gigamedia module range and to match our popular Sector Sequel wiring accessories. Available in two sizes, a 2 gang single plate and a 4 gang twin plate.

Description	Ref No.	Order No.
Twin Face plate - Sequel (4 Module)	FP-T4R	000051
Single Face plate - Sequel (2 Module)	FP-S2R	000064

Structured Cabling

MODULES & TOOLS



MODULES

Modular sockets allow a high level of flexibility during installation, allowing the installer to select socket types relevant to the location, be this traditional telephone, or high performance network.

Available in both popular module sizes 25x50 and 25 x 38 (LJ6C).

RJ45 available in CAT5E and CAT6.

BT Jack available in PBX Master and Secondary.

Description	Ref No.	Order No.
CAT5E		
Module (RJ45) CAT5E UTP 25 x 50	MOD-C5E2550	000093
Module (RJ45) CAT5E UTP 25 x 38 (LJ6C)	MOD-C5E2538	000103

Description	Ref No.	Order No.
Telephone		
Module PBX Master 25 x 50	MOD-BTM2550	000116
Module Secondary 25 x 50	MOD-BTS2550	000129

Description	Size	Ref No.	Order No.
Blanks			
Module Blank (1/2)	12.5 x 50 (Pack 2)	MOD-BLK1250	000145
Module Blank (1)	25 x 50 (Pack 1)	MOD-BLK2550	000132
Module Blank (1)	25 x 38 (Pack 1)	MOD-BLK2538	000556

TOOLS



Universal Multifunction Cable Preparation Tool

Cuts round & flat UTP/STP cables.

Strips the outer sheath from round and uneven cables.

Tool free cutting blade adjustment.

Suitable for cable sizes ranging from 3.2mm to 9.0mm outside diameter.

Description	Ref No.	Order No.
Universal Stripping Tool	GGM907X501	000543



IDC Punch Down Tool for CAT5E, CAT6 and Telephone

Used to insert individual wires into the UTP modules within faceplates and patch panels. Designed for use on any Krone-style IDC terminal. Automatically trims off excess wire to the correct length as the connection is made. Also incorporates a hook attachment for removing wires from IDC terminals and a spudger for tracing and arranging wires neatly.

Can also be used for terminating UK telephone outlets.

Description	Ref No.	Order No.
Punchdown Tool	TOOL-PD	000158

Structured Cabling CABINETS



Series 4 Wall Box

This cost-effective stylish wall mounted enclosure is designed to the highest standards as you would expect from a Gigamedia product. As with the whole of the Gigamedia range, the Series 4 design is based on input from the installer - which is probably why it features everything that you want to see as standard in a wall mounted enclosure.

Adjustable 19" mounting angles.

Quick cable access via top and bottom cable entry.

Lockable glass or steel front doors
(left/right hand hang - quick reverse facility).

Weight loading of 45kg.

U Height	Size	Ref No.	Order No. 0004
----------	------	---------	-------------------

Glass Door - 450mm Deep

6U	600w x 450d	WB2-006-300	000572
10U	600w x 450d	WB2-010-300	000585
14U	600w x 450d	WB2-014-300	000598
18U	600w x 450d	WB2-018-300	000608

Glass Door - 550mm Deep (2 Part)

6U	600w x 550d	WB2-056-300	000611
10U	600w x 550d	WB2-060-300	000624
14U	600w x 550d	WB2-064-300	000637
18U	600w x 550d	WB2-068-300	000640

Steel Door - 450mm Deep

6U	600w x 450d	WB2-076-300	000653
10U	600w x 450d	WB2-080-300	000666
14U	600w x 450d	WB2-084-300	000679
18U	600w x 450d	WB2-088-300	000682

Steel Door - 550mm Deep (2 Part)

6U	600w x 550d	WB2-116-300	000695
10U	600w x 550d	WB2-120-300	000705
14U	600w x 550d	WB2-124-300	000718
18U	600w x 550d	WB2-128-300	000721



Series 5 Cabinet

Fully assembled and ready to use.

Powder coated with a leatherette texture finish.

Open base allows cables to come directly in to the cabinet.

Steel trimmed (key lockable) quick release front door with clear toughened glass.

U Height	Size	Ref No.	Order No. 0004
27U	600w x 600d	FS5-327-300	000734
42U	600w x 600d	FS5-342-300	000747
47U	600w x 600d	FS5-347-300	000750
27U	600w x 800d	FS5-377-300	000763
42U	600w x 800d	FS5-392-300	000776
47U	600w x 800d	FS5-397-300	000789
27U	800w x 600d	FS5-477-300	000792
42U	800w x 600d	FS5-492-300	000802
47U	800w x 600d	FS5-497-300	000815
27U	800w x 800d	FS5-527-300	000828
42U	800w x 800d	FS5-542-300	000831
47U	800w x 800d	FS5-547-300	000844

Delivery available anywhere in England and Wales at a cost of £30.00 (Scotland P.O.A.) on all free standing cabinets (7-10 days). Call for further details.

Structured Cabling

CABINETS



Series 5 Server Cabinet

The Series 5 Server Cabinet is the traditional Gigamedia server cabinet and an industry standard in its design, function and practicality.

This range of enclosures can accommodate all makes of server models from Dell, IBM, Sun, Cisco, HP etc.

Key lockable, quick release front door.

U Height	Size	Ref No.	Order No.
			0004

Steel Trimmed Vented Glass Front Door (4mm clear toughened)

27U	600w x 1000d	FS5-427-300	000857
42U	600w x 1000d	FS5-442-300	000860

Steel Vented Front Door

27U	600w x 1000d	FS5-727-300	000873
42U	600w x 1000d	FS5-742-300	000886



Mini Server Cabinet

Free standing enclosure.

Specifically intended for the small office environment.

Designed to house all major server brands.

Vented doors allow front to rear ventilation in conjunction with server fans.

Fully adjustable 19" mounting angles fitted front and rear.

Lockable glass or steel front doors

(left/right hand hang - quick reverse facility).

Open base allows cables to come directly in to the cabinet.

Raised top cover. Max weight 450kg (evenly distributed).

U Height	Size	Ref No.	Order No.
			0004

9U	600w x 1000d	FS5-409-501	000954
12U	600w x 1000d	FS5-412-500	000967



Series 6 Mini Cabinet

A cost effective free standing enclosure designed to the highest standards.

Designed specifically for the small office and home environment this small enclosure is ideally suited for under desk applications.

Fully adjustable 19" mounting angles fitted front and rear
Cable access in the top and bottom of the cabinet.

Lockable glass or steel front doors
(left/right hand hang - quick reverse facility).

Strong yet lightweight welded frame, giving a loading rating of 100kg.

U Height	Size	Ref No.	Order No.
			0004

Glass Front Door

10U	600w x 600d	FS6-010-300	000899
14U	600w x 600d	FS6-014-300	000909
18U	600w x 600d	FS6-018-300	000912

Steel Front Door

10U	600w x 600d	FS6-110-300	000925
14U	600w x 600d	FS6-114-300	000938
18U	600w x 600d	FS6-118-300	000941

Delivery available anywhere in England and Wales at a cost of £30.00 (Scotland P.O.A.) on all free standing cabinets (7-10 days). Call for further details.

Structured Cabling

CABINET ACCESSORIES



Shelving

Description	Size	Ref No.	Order No. 0004
Standard Shelving (Fixed Vented - 50kg Load)			
Fixed Vented Shelf	19" x 450d	SM1-355-311	001050
Fixed Vented Shelf	19" x 570d	SM1-356-311	001063
Fixed Vented Shelf	19" x 670d	SM1-357-311	001076
Fixed Vented Shelf	19" x 720d	SM1-363-311	001089
Heavy Duty Shelving (Fixed Vented - 100kg Load) Suitable for Series 4, 5 and 6 cabinets			
Fixed Vented Shelf	19" x 450d	SM1-372-311	001092
Fixed Vented Shelf	19" x 570d	SM1-373-311	001102
Fixed Vented Shelf	19" x 670d	SM1-374-311	001115
Fixed Vented Shelf	19" x 720d	SM1-375-311	001128
Heavy Duty Shelving (Telescopic- 50kg Load) Suitable for Series 4, 5 and 6 cabinets			
Tele Standard Shelf	19" x 450d	GA1-321-311	001131
Tele Standard Shelf	19" x 570d	GA1-324-311	001144
Tele Standard Shelf	19" x 670d	GA1-326-311	001157
Tele Standard Shelf	19" x 720d	GA1-329-311	001160
Heavy Duty Shelving (Telescopic- 100kg Load) Suitable for Series 4, 5 and 6 cabinets			
Tele Heavy Duty Shelf	19" x 450d	GA1-350-311	001173
Tele Heavy Duty Shelf	19" x 570d	GA1-353-311	001186
Tele Heavy Duty Shelf	19" x 670d	GA1-355-311	001199
Tele Heavy Duty Shelf	19" x 720d	GA1-358-311	001209
U Height	Size	Ref No.	Order No. 0004
Cantilever Shelf (15kg Load)			
1U	200mm	SM1-345-310	001212
1U	300mm	SM1-346-310	001225
2U	400mm	SM1-349-310	001238



Accessories

U Height	Size	Ref No.	Order No. 0004
Plinths (Fixed) for Series 5 Cabinets			
Fixed Plinth	600w x 600d	SS5-025-314	000970
Fixed Plinth	600w x 800d	SS5-026-314	000983
Fixed Plinth	600w x 1000d	SS5-027-314	000996
Fixed Plinth	800w x 600d	SS5-028-314	001005
Fixed Plinth	800w x 800d	SS5-029-314	001018
Fixed Plinth	800w x 1000d	SS5-030-314	001021
Plinths (Extendable) for Series 5 Cabinets			
Extendable Plinth	600w x 1000d	SS5-015-314	001034
Extendable Plinth	800w x 1000d	SS5-018-314	001047



Fan Trays

Description	Fan Qty	Ref No.	Order No. 0004
Fans (19" Rack Mount)			
1U Fan Unit	2 x Way	02-0086-1	001241
1U Fan Unit	3 x Way	02-0084-1	001254
Fans (Roof Mounted Fan Unit) Suitable for Series 5 and Mini Server cabinets			
Fan Tray	2 Way	EA5-001-021	001267
Fan Tray	4 Way	EA5-002-021	001270



Castors, Feet & Accessory Kits

Description	Ref No.	Order No. 0004
Baying Kit	GA1-023-500	001283
Earth Bonding Kit	EA1-030-000	001296
Document Wallet	BI1-037-000	001306
Light Duty Castor	GA1-140-000	001319
Medium Duty Castor	GA1-141-500	001322
Heavy Duty Castor	GA1-142-500	001335
Cage Nuts Pack of 50	GA1-028-321	001348
Levelling Feet 100mm (Standard)	GA1-143-000	001351