

Industrial Control Products & Enclosures



Contactors, Thermal Overloads & Auxiliary Contact Blocks	236 - 241
Soft Starters	242
Motor Protective Breakers	243
Relays, Auxiliary Contacts & Timers	244 - 246
Push Buttons & Switches	247 - 251
Transformers	252
Power Supplies	252
Enclosed Starters & Heating/Lighting Contactors	253 - 254
Terminals	254 - 255
Steel Enclosures	255 - 257

Control & Automation



ABB

3 Pole Mini Contactors - Type B6 & B7

DC contactor ranges also available.

AC3 415V (A)	AC3 415V (kW)	Auxiliary Contacts N/O	N/C	Coil Voltage 50 Hz	Ref No.	Order No. 1933
8.5	4	1	-	24	B6-30 10 24	000529
8.5	4	1	-	110	B6-30 10 110	000561
8.5	4	1	-	240	B6-30 10 240	000574
11.5	5.5	1	-	24	B7-30 10 24	998136
11.5	5.5	1	-	110	B7-30 10 110	990325
11.5	5.5	1	-	240	B7-30 10 240	990338



ABB

Thermal Overloads

For MINI Contactors type B6 & B7.

Setting Range (A)	Ref No.	Order No. 1933
0.10 - 0.16	T7DU0.16	998149
0.16 - 0.24	T7DU0.24	998152
0.24 - 0.4	T7DU0.4	998165
0.40 - 0.60	T7DU0.6	998178
0.60 - 1.0	T7DU1.0	998181
1.0 - 1.6	T7DU1.6	998194
1.6 - 2.4	T7DU2.4	998204
2.4 - 4.0	T7DU4.0	990341
4.0 - 6.0	T7DU6.0	996400
6.0 - 9.0	T7DU9.0	998217

ABB

Auxiliary Contacts Blocks

For MINI Contactors type B6 & B7.

N.O	N.C	Mounting	Ref No.	Order No. 1933
1	1	Top	CA6.11M	998233



3 POLE

4 POLE

ABB

3 Pole Contactors - Type A

Ranges available up to 750A.

DC contactor ranges also available.

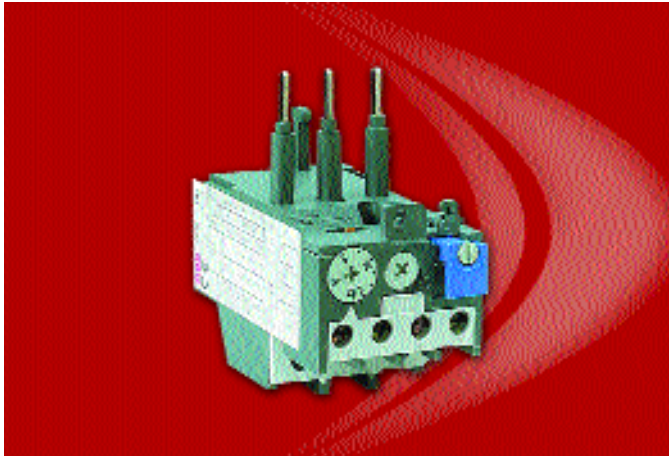
AC3 400V (A)	AC3 400V (kW)	Auxiliary Contacts N/O	N/C	Coil Voltage 50Hz	Ref No.	Order No. 1933
9	4	1	-	24	A9.30.10 24	049616
9	4	1	-	110	A9.30.10 110	049674
9	4	1	-	240	A9.30.10 240	049755
12	5.5	1	-	24	A12.30.10 24	049917
12	5.5	1	-	110	A12.30.10 110	049975
12	5.5	1	-	240	A12.30.10 240	050058
17	7.5	1	-	24	A16.30.10 24	050126
17	7.5	1	-	110	A16.30.10 110	050210
17	7.5	1	-	240	A16.30.10 240	050320
26	11	1	-	24	A26.30.10 24	050388
26	11	1	-	110	A26.30.10 110	050443
26	11	1	-	240	A26.30.10 240	050524
32	15	1	-	24	A30.30.10 24	050689
32	15	1	-	110	A30.30.10 110	050744
32	15	1	-	240	A30.30.10 240	050825
37	18.5	1	-	24	A40.30.10 24	050883
37	18.5	1	-	110	A40.30.10 110	050948
37	18.5	1	-	240	A40.30.10 240	051028

ABB

4 Pole Contactors - Type A

AC1 40°C (A)	Auxiliary Contacts N/O	N/C	Coil Voltage 50Hz	Ref No.	Order No. 1933
25	-	-	110	A9.40.00 110	049823
25	-	-	240	A9.40.00 240	049865
30	-	-	110	A16.40.00 110	050197
30	-	-	240	A16.40.00 240	050317
45	-	-	110	A26.40.00 110	050595
45	-	-	240	A26.40.00 240	050634
70	-	-	110	A45.40.00 110	051099
70	-	-	240	A45.40.00 240	051125
100	-	-	110	A50.40.00 110	051277
100	-	-	240	A50.40.00 240	051303
125	-	-	110	A75.40.00 110	051510
125	-	-	240	A75.40.00 240	051549

Contactors, Thermal Overloads & Auxiliary Contact Blocks



Thermal Overloads

For Type A contactors.

Setting Range (A)	Ref No.	Order No. 1933
Suitable For A9 - A40 Contactors		
0.10 - 0.16	TA25DU0.16	047896
0.16 - 0.25	TA25DU0.25	047980
0.25 - 0.4	TA25DU0.4	048565
0.1 - 0.63	TA25DU0.63	048578
0.63 - 1.0	TA25DU1.0	048581
1.0 - 1.4	TA25DU1.4	048594
1.3 - 1.8	TA25DU1.8	048604
1.7 - 2.4	TA25DU2.4	048617
2.2 - 3.1	TA25DU3.1	048620
2.8 - 4.0	TA25DU4.0	048633
3.5 - 5.0	TA25DU5.0	048646
4.5 - 6.5	TA25DU6.5	048659
6.0 - 8.5	TA25DU8.5	048662
7.5 - 11.0	TA25DU11	048675
10.0 - 14.0	TA25DU14	048688
13.0 - 19.0	TA25DU19	048691
18.0 - 25.0	TA25DU25	048701
24.0 - 32.0	TA25DU32	048714

Suitable For A30 - A40 Contactors

18 - 25	TA42DU25	048743
22 - 32	TA42DU32	048756
29 - 42	TA42DU42	048769



Auxiliary Contacts Blocks

For Type A contactors.

N.O	N.C	Mounting	Ref No.	Order No. 1933
1	-	Top	CA5.10	052069
-	1	Top	CA5.01	052056



3 Pole MINI Contactors - Type DILEM

AC3 380V (A)	AC3 440V (kW)	Auxiliary Contacts 1 N/O 1 N/C	Coil Voltage 50Hz	Ref No.	Order No. 6183
8.5	4	1 -	24	DILEM-10 (24V50HZ)	031770
8.5	4	1 -	110	DILEM-10 (110V50HZ)	021887
8.5	4	1 -	240	DILEM-10 (240V50HZ)	021874

AC3 380V (A)	AC3 440V (kW)	Auxiliary Contacts 1 N/O 1 N/C	Coil Voltage D/C	Ref No.	Order No. 6183
8.5	4	1 -	24	DILEM-10-G (24VDC)	032148



Thermal Overloads

For DILEM MINI Contactors.

Setting Range	Ref No.	Order No. 6183
0.40 - 0.60	ZE-0.6	033231
0.60 - 1.0	ZE-1.0	033244
1.0 - 1.6	ZE-1.6	033257
1.6 - 2.4	ZE-2.4	033260
2.4 - 4.0	ZE-4.0	033273
4.0 - 6.0	ZE-6.0	033286
6.0 - 9.0	ZE-9.0	033299



Auxiliary Contact Blocks

For DILEM MINI Contactors.

Top mounting.

N/O	N/C	Ref No.	Order No. 6183
1	1	11-DILEM	031974
2	2	22-DILEM	031987



3 Pole xStart Contactors - Type DILM

Thermal Overloads

For type DILM xStart Contactors.

AC3 400V (A)	AC3 400V (kW)	Auxiliary Contacts N/O	Auxiliary Contacts N/C	Coil Voltage 50Hz	Ref No.	Order No. 6183
9	4	1	-	24	DILM9-10(24V50HZ)	107400
9	4	1	-	110	DILM9-10(110V50HZ)	107251
9	4	1	-	240	DILM9-10(230V50HZ)	107374
12	5.5	1	-	24	DILM12-10(24V50HZ)	098438
12	5.5	1	-	110	DILM12-10(110V50HZ)	098289
12	5.5	1	-	240	DILM12-10(230V50HZ)	098409
18	7.5	1	-	24	DILM17-10(24V50HZ)	099974
18	7.5	1	-	110	DILM17-10(110V50HZ)	099864
18	7.5	1	-	240	DILM17-10(230V50HZ)	099945
25	11	1	-	24	DILM25-10(24V50HZ)	101134
25	11	1	-	110	DILM25-10(110V50HZ)	101024
25	11	1	-	240	DILM25-10(230V50HZ)	101105
32	15	1	-	24	DILM32-10(24V50HZ)	102298
32	15	1	-	110	DILM32-10(110V50HZ)	102188
32	15	1	-	240	DILM32-10(230V50HZ)	102269
40	18.5	-	-	24	DILM40(24V50HZ)	103640
40	18.5	-	-	110	DILM40(110V50HZ)	103530
40	18.5	-	-	240	DILM40(230V50HZ)	103611
50	22	-	-	24	DILM50(24V50HZ)	104225
50	22	-	-	110	DILM50(110V50HZ)	104115
50	22	-	-	240	DILM50(230V50HZ)	104199

Setting Range	Ref No.	Order No. 6183
---------------	---------	-------------------

Suitable For DILM9 - DILM12 Contactors

0.6 - 1.0	ZB12-1,0	116873
1.0 - 1.6	ZB12-1,6	116886
1.6 - 2.4	ZB12-2,4	116912
2.4 - 4.0	ZB12-4	116925
4.0 - 6.0	ZB12-6	116938
6.0 - 10.0	ZB12-10	116899
9.0 - 12.0	ZB12-12	116909
10.0 - 16.0	ZB12-16	117018

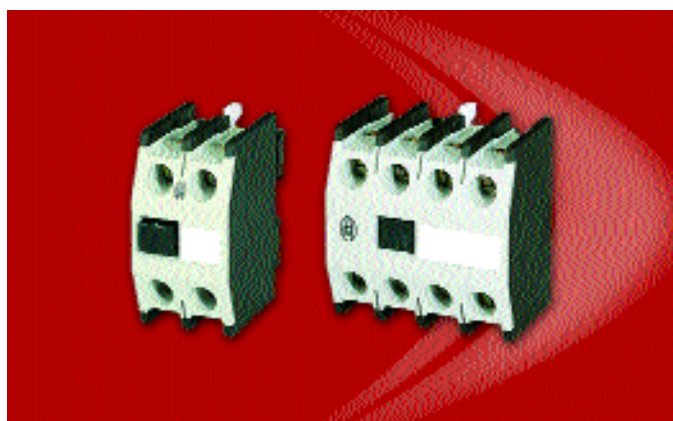
Suitable For DILM17 - DILM32 Contactors

10.0 - 16.0	ZB32-16	117018
16.0 - 24.0	ZB32-24	117034
24.0 - 32.0	ZB32-32	117047

Suitable For DILM40 - DILM50 Contactors

16.0 - 24.0	ZB65-24	117092
24.0 - 40.0	ZB65-40	117102
40.0 - 57.0	ZB65-57	137360

AC3 400V (A)	AC3 400V (kW)	Auxiliary Contacts N/O	Auxiliary Contacts N/C	Coil Voltage DC	Ref No.	Order No. 6183
9	4	1	-	24	DILM9-10(24VDC)	107426
12	5.5	1	-	24	DILM12-10(24VDC)	098454
18	7.5	1	-	24	DILM17-10(RDC24)	100096
25	11	1	-	24	DILM25-10(RDC24)	101257
32	15	1	-	24	DILM32-10(RDC24)	102418
40	18.5	-	-	24	DILM40(RDC24)	103763
50	22	-	-	24	DILM50(RDC24)	104348



Auxiliary Contacts Blocks

For type xStart DILM9 - DILM50 Contactors.
Top mounting.

N/O	N/C	For Use With	Ref No.	Order No. 6183
1	1	DILM9 - DILM32	DILM32-XHI11	103035
2	2	DILM9 - DILM32	DILM32-XHI22	103048
1	1	DILM40 - DILM65	DILM150-XHI11	099372
2	2	DILM40 - DILM65	DILM150-XHI22	099408

Contactors, Thermal Overloads & Auxiliary Contact Blocks



SIEMENS

SIRIUS 3 Pole Contactors - Type 3RT10

24VDC operated contactors available on request.

AC3 400V (A)	AC3 400V (kW)	Auxillary Contacts 1 N/O	1 N/C	Coil Voltage 50/60Hz	Ref No.	Order No. 7788
--------------------	---------------------	-----------------------------	-------	----------------------------	---------	-------------------

Size S00

7	3	1	-	24	3RT10 15-1AB01	017156
7	3	1	-	110	3RT10 15-1AF01	017198
7	3	1	-	230	3RT10 15-1AP01	017318
9	4	1	-	24	3RT10 16-1AB01	018265
9	4	1	-	110	3RT10 16-1AF01	018304
9	4	1	-	230	3RT10 16-1AP01	018414
12	5.5	1	-	24	3RT10 17-1AB01	019387
12	5.5	1	-	110	3RT10 17-1AF01	019426
12	5.5	1	-	230	3RT10 17-1AP01	019549

Size S0

12	5.5	-	-	24	3RT10 24-1AB00	021171
12	5.5	-	-	110	3RT10 24-1AF00	021265
12	5.5	-	-	230	3RT10 24-1AP00	021472
17	7.5	-	-	24	3RT10 25-1AB00	022002
17	7.5	-	-	110	3RT10 25-1AF00	022099
17	7.5	-	-	230	3RT10 25-1AP00	022293
25	11	-	-	24	3RT10 26-1AB00	022934
25	11	-	-	110	3RT10 26-1AF00	023027
25	11	-	-	230	3RT10 26-1AP00	023221

Size S2

32	15	-	-	24	3RT10 34-1AB00	231314
32	15	-	-	110	3RT10 34-1AF00	023904
32	15	-	-	230	3RT10 34-1AP00	024107
40	18.5	-	-	24	3RT10 35-1AB00	231327
40	18.5	-	-	110	3RT10 35-1AF00	024741
40	18.5	-	-	230	3RT10 35-1AP00	024958
50	22	-	-	24	3RT10 36-1AB00	231330
50	22	-	-	110	3RT10 36-1AF00	025533
50	22	-	-	230	3RT10 36-1AP00	025737



SIEMENS

SIRIUS Thermal Overloads

For type SIRIUS 3RT contactors.

Setting Range	Ref No.	Order No. 7788
------------------	---------	-------------------

Suitable for S00 Contactors

1.8 - 2.5	3RU11 16-1CBO	231204
2.2 - 3.2	3RU11 16-1DBO	990859
2.8 - 4.0	3RU11 16-1EBO	990862
4.5 - 6.3	3RU11 16-1GBO	990875
5.5 - 8.0	3RU11 16-1HBO	990888
9.0 - 12.0	3RU11 16-1KBO	990901

Suitable For S0 Contactors

7.0 - 10.0	3RU11 26-1JBO	992310
9.0 - 12.5	3RU11 26-1KBO	231301
11.0 - 16.0	3RU11 26-4ABO	992336
20.0 - 25.0	3RU11 26-4DBO	992349

Suitable For S2 Contactors

22.0 - 32.0	3RU11 36-4EBO	231246
28.0 - 40.0	3RU11 36-4FBO	231259
40.0 - 50.0	3RU11 36-4HBO	231275

SIEMENS

SIRIUS Auxiliary Contact Blocks

Cable entry from above & below.

Front mounting.

N/O	N/C	Ref No.	Order No. 7788
-----	-----	---------	-------------------

For Type S00 Contactors

2	-	3RH1911-1FA20	990325
1	1	3RH1911-1FA11	990312
2	2	3RH1911-1FA22	990338

For Type S0, S2 & S3 Contactors

2	2	3RH1921-1FA22	991858
---	---	---------------	--------



3 Pole MINI Contactors - Type LC1-K & LP1-K

AC3 380/415V (A)	AC3 380/415V (kW)	Auxiliary Contacts		Coil Voltage 50/60Hz	Ref No.	Order No. 8677
		N/O	N/C			
6	2.2	1	-	24	LC1-K0610 B7	042561
6	2.2	1	-	110	LC1-K0610 F7	040330
6	2.2	1	-	240	LC1-K0610 U7	040343
9	4	1	-	24	LC1-K0910 B7	040961
9	4	1	-	110	LC1-K0910 F7	039215
9	4	1	-	240	LC1-K0910 U7	041216

AC3 380/415V (A)	AC3 380/415V (kW)	Auxiliary Contacts		Coil Voltage D/C	Ref No.	Order No. 8677
		1 N/O	1 N/C			
6	2.2	1	-	24	LP1-K0610 BD	044394
9	4	1	-	24	LP1-K0910 BD	044417



Thermal Overloads

For type K MINI Contactors.

Setting Range	Ref No.	Order No. 8677
0.11 - 0.06	LR2-K0301	049056
0.16 - 0.23	LR2-K0302	044310
0.23 - 0.36	LR2-K0303	044323
0.36 - 0.54	LR2-K0304	044336
0.54 - 0.8	LR2-K0305	044349
0.8 - 1.2	LR2-K0306	044352
1.2 - 1.8	LR2-K0307	041708
1.8 - 2.6	LR2-K0308	044365
2.6 - 3.7	LR2-K0310	044378
3.7 - 5.5	LR2-K0312	044381
5.5 - 8.0	LR2-K0314	045762
8.0 - 11.5	LR2-K0316	045775



3 Pole Reversing MINI Contactors - Type LC2-K

AC3 380/415V (A)	AC3 380/415V (kW)	Auxiliary Contacts		Coil Voltage 50/60Hz	Ref No.	Order No. 8677
		N/O	N/C			
9	4	-	1	24	LC2-K0901 B7	082602
9	4	-	1	110	LC2-K0901 F7	042707
9	4	-	1	240	LC2-K0901 U7	082660



Auxiliary Contact Blocks

For type K MINI Contactors.

Front mounting.

N/O	N/C	Ref No.	Order No. 8677
1	1	LA1-KN11	040408
2	2	LA1-KN22	040398

Contactors, Thermal Overloads & Auxiliary Contact Blocks



TeSys 3 Pole Contactors - Type LC1-D

AC3 415V (A)	AC3 415V (kW)	Auxiliary Contacts N/O N/C		Coil Voltage 50/60Hz	Ref No.	Order No. 8677
9	4	1	1	24	LC1-D09 B7	087856
9	4	1	1	110	LC1-D09 F7	087953
9	4	1	1	240	LC1-D09 U7	088156
9	4	1	1	415	LC1-D09 N7	088059
12	5.5	1	1	24	LC1-D12 B7	088224
12	5.5	1	1	110	LC1-D12 F7	088295
12	5.5	1	1	240	LC1-D12 U7	088499
12	5.5	1	1	415	LC1-D12 N7	088402
18	9	1	1	24	LC1-D18 B7	088538
18	9	1	1	110	LC1-D18 F7	088622
18	9	1	1	240	LC1-D18 U7	088790
18	9	1	1	415	LC1-D18 N7	088716
25	11	1	1	24	LC1-D25 B7	088839
25	11	1	1	110	LC1-D25 F7	088936
25	11	1	1	240	LC1-D25 U7	089139
25	11	1	1	415	LC1-D25 N7	089045
32	15	1	1	24	LC1-D32 B7	093413
32	15	1	1	110	LC1-D32 F7	093361
32	15	1	1	240	LC1-D32 U7	093730
32	15	1	1	415	LC1-D32 N7	093688
38	18.5	1	1	24	LC1-D38 B7	105851
38	18.5	1	1	110	LC1-D38 F7	105932
38	18.5	1	1	240	LC1-D38 U7	106096
38	18.5	1	1	415	LC1-D38 N7	106025
40	22	1	1	24	LC1-D40 B7	093785
40	22	1	1	110	LC1-D40 F7	093905
40	22	1	1	240	LC1-D40 U7	094153
40	22	1	1	415	LC1-D40 N7	094069
50	25	1	1	24	LC1-D50 B7	094195
50	25	1	1	110	LC1-D50 F7	094315
50	25	1	1	240	LC1-D50 U7	094551
50	25	1	1	415	LC1-D50 N7	094441

AC3 415V (A)	AC3 415V (kW)	Auxiliary Contacts N/O N/C		Coil Voltage DC	Ref No.	Order No. 8677
9	4	1	1	24	LC1-D09 BD	087872
12	5.5	1	1	24	LC1-D12 BD	088237
18	9	1	1	24	LC1-D18 BD	088541
25	11	1	1	24	LC1-D25 BD	088855
32	15	1	1	24	LC1-D32 BD	093426
38	18.5	1	1	24	LC1-D38 BD	105864
50	25	1	1	24	LC1-D50 BD	094205



TeSys 4 Pole Contactors - Type LC1-D

AC1 440V (A)	Auxiliary Contacts N/O N/C		Coil Voltage 50/60Hz	Ref No.	Order No. 8677
20	1	1	110	LC1-DT20 F7	108573
20	1	1	240	LC1-DT20 U7	082741
25	1	1	110	LC1-DT25 F7	108696
25	1	1	240	LC1-DT25 U7	108780
32	1	1	110	LC1-DT32 F7	108858
32	1	1	240	LC1-DT32 U7	108913
40	1	1	110	LC1-DT40 F7	108984
40	1	1	240	LC1-DT40 U7	109064



Auxiliary Contact Blocks

For type 'TeSys' LC...D Contactors.

Front mounting.

N/O	N/C	Ref No.	Order No. 8677
2	-	LAD-N20	087775
-	2	LAD-N02	087704
1	1	LAD-N11	087733
2	2	LAD-N22	087791



Thermal Overloads

For type LC1 Contactors.

Setting Range	Ref No.	Order No. 8677
For Direct Mounting D09 - D38		
0.10 - 0.16	LRD-01	098447
0.16 - 0.25	LRD-02	098450
0.25 - 0.40	LRD-03	098463
0.40 - 0.63	LRD-04	098476
0.63 - 1.0	LRD-05	098489
1.0 - 1.70	LRD-06	098502
1.6 - 2.5	LRD-07	093374
2.5 - 4.0	LRD-08	098528
4.0 - 6.0	LRD-10	098560
5.5 - 8.0	LRD-12	093387
7.0 - 10.0	LRD-14	093390
9.0 - 13.0	LRD-16	098609
12.0 - 18.0	LRD-21	098625
16.0 - 24.0	LRD-22	098641
23.0 - 32.0	LRD-32	098654
30.0 - 38.0	LRD-35	098777

For Direct Mounting D40 - D50

17.0 - 25.0	LRD-3322	098667
23.0 - 32.0	LRD-3353	098670
30.0 - 40.0	LRD-3355	098683
37.0 - 50.0	LRD-3357	098696



Alstair Soft Start/Stop - Type ATS 01

Operating Current le	230V Single Phase (kW)	230V Three Phase (kW)	Control Voltage AC/DC	Ref No.	Order No. 8677
Single/Three phase 230V AC - Soft Start					
3	0.37	0.37/0.55	110/230	ATS01 N103FT	184076
6	0.75	0.75/1.1	110/230	ATS01 N106FT	184089
9	1.1	1.5	110/230	ATS01 N109FT	184092
12	1.5	2.2	110/230	ATS01 N112FT	184092
25	2.2	3.0/5.5	110/230	ATS01 N125FT	184115

Three phase 380/415V AC - Soft Start/Stop

Operating Current le	380/415V (kW)	Control Voltage AC/DC	Ref No.	Order No. 8677
6	1.5/3.0	110/230	ATS01 N206 QN	184128
9	4.0	110/230	ATS01 N209 QN	184131
12	5.5	110/230	ATS01 N212 QN	184144
22	7.5/11.0	110/230	ATS01 N222 QN	184157
32	15.0	110/230	ATS01 N232 QN	184160



Motor Protective Breakers



SIEMENS

SIRIUS Motor Protective Breakers - Type 3RV10

Class 10.

With screw connection.

Setting Range (A)	Ref No.	Order No. 7788
Size S00		
0.35 - 0.5	3RV1011-0FA10	041151
0.7 - 1.0	3RV1011-0JA10	041274
1.1 - 1.6	3RV1011-1AA10	041355
1.4 - 2.0	3RV1011-1BA10	041397
2.8 - 4.0	3RV1011-1EA10	041517
4 - 6.3	3RV1011-1GA10	041591
7 - 10	3RV1011-1JA10	041672
9 - 12	3RV1011-1KA10	041711
Size S0		
7 - 10	3RV1021-1JA10	042118
9 - 12.5	3RV1021-1KA10	042134
11 - 16	3RV1021-4AA10	042150
20 - 25	3RV1021-4DA10	042215
Size S2		
11 - 16	3RV1031-4AA10	042231
14 - 20	3RV1031-4BA10	042260
18 - 25	3RV1031-4DA10	042299
22 - 32	3RV1031-4EA10	042338
28 - 40	3RV1031-4FA10	042370
36 - 45	3RV1031-4GA10	042419
40 - 50	3RV1031-4HA10	042448



Motor Protective Breakers - Type GV2

Connection by screw clamp terminals.

Setting Range (A)	Ref No.	Order No. 8677
Operated By Push Buttons		
0.16 - 0.25	GV2-ME02	087089
0.25 - 0.40	GV2-ME03	087102
0.40 - 0.63	GV2-ME04	087128
0.63 - 1.0	GV2-ME05	087157
1.0 - 1.60	GV2-ME06	087186
1.6 - 2.5	GV2-ME07	089223
2.5 - 4.0	GV2-ME08	089317
4.0 - 6.3	GV2-ME10	089401
6.0 - 10.0	GV2-ME14	089485
9.0 - 14.0	GV2-ME16	089595
13.0 - 18.0	GV2-ME20	089621
17.0 - 23.0	GV2-ME21	089650
20.0 - 25.0	GV2-ME22	089676
24.0 - 32.0	GV2-ME32	089689
Operated By Rotary Handle		
Setting Range (A)	Ref No.	Order No. 8677
0.16 - 0.25	GV2-P02	048853
0.25 - 0.40	GV2-P03	046871
0.40 - 0.63	GV2-P04	046884
0.63 - 1.0	GV2-P05	046897
1.0 - 1.60	GV2-P06	046907
1.6 - 2.5	GV2-P07	041410
2.5 - 4.0	GV2-P08	046910
4.0 - 6.3	GV2-P10	041423
6.0 - 10.0	GV2-P14	046923
9.0 - 14.0	GV2-P16	046936
13.0 - 18.0	GV2-P20	041193
17.0 - 23.0	GV2-P21	041203
20.0 - 25.0	GV2-P22	040327
24.0 - 32.0	GV2-P32	092980



4 Pole MINI Contactor Relays - Type DILER



4 Pole xStart Contactor Relays - Type DILA

No. of Contacts N/O	N/C	Coil Voltage 50Hz	Ref No.	Order No. 6183
2	2	24	DILER22 (24V 50Hz)	035802
2	2	110	DILER22 (110V 50Hz)	021722
2	2	240	DILER22 (240V 50Hz)	021719
3	1	24	DILER31 (24V 50Hz)	035815
3	1	110	DILER31 (110V 50Hz)	021777
3	1	240	DILER31 (240V 50Hz)	021764
4	-	24	DILER 40 (24V 50Hz)	046943
4	-	110	DILER 40 (110V 50Hz)	021670
4	-	240	DILER 40 (240V 50Hz)	021667

No. of Contacts N/O	N/C	Coil Voltage 50Hz	Ref No.	Order No. 6183
4	-	24	DILA 40 (24V 50Hz)	096537
4	-	110	DILA 40 (110V 50Hz)	096388
4	-	240	DILA 40 (230V 50Hz)	096508
3	1	24	DILA31 (24V 50Hz)	096207
3	1	110	DILA31 (110V 50Hz)	096058
3	1	240	DILA31 (230V 50Hz)	096171
2	2	24	DILA22 (24V 50Hz)	095871
2	2	110	DILA22 (110V 50Hz)	095729
2	2	240	DILA22 (230V 50Hz)	095842

No. of Contacts N/O	N/C	Coil Voltage DC	Ref No.	Order No. 6183
2	2	24	DILER22-G (24VDC)	031990
3	1	24	DILER31-G (24VDC)	032041
4	-	24	DILER40-G (24VDC)	032096

No. of Contacts N/O	N/C	Coil Voltage DC	Ref No.	Order No. 6183
4	-	24	DILA40(24VDC)	096553
3	1	24	DILA31(24VDC)	096223
2	2	24	DILA22(24VDC)	095897



Auxiliary Contacts

For type DILER MINI contactor relays.

Top Mounting.



Auxiliary Contacts

For type DILA contactor relays.

Top Mounting.

N/O	N/C	Ref No.	Order No. 6183
1	1	11DILE	021829
2	2	22DILE	021858

N/O	N/C	Ref No.	Order No. 6183
1	1	DILA-XHI11	096692
2	2	DILA-XHI22	096728

Relays, Auxiliary Contacts & Timers



4 Pole MINI Control Relays - Type CA2KN

No. of Contacts		Coil Voltage 50Hz	Ref No.	Order No. 8677
N/O	N/C			
4	-	24	CA2-KN40 B7	042040
4	-	110	CA2-KN40 F7	042053
4	-	240	CA2-KN40 U7	042066
3	1	24	CA2-KN31 B7	042008
3	1	110	CA2-KN31 F7	042024
3	1	240	CA2-KN31 U7	042037
2	2	24	CA2-KN22 B7	044514
2	2	110	CA2-KN22 F7	041999
2	2	240	CA2-KN22 U7	044527



Auxiliary Contacts

For type CAD Relays.

N/O	N/C	Ref No.	Order No. 8677
1	1	LAD-N11	087733
2	2	LAD-N22	087791



Tesys 5 Pole Control Relays - Type CAD

No. of Contacts		Coil Voltage 50/60Hz	Ref No.	Order No. 8677
N/O	N/C			
3	2	24	CAD-32 B7	086349
3	2	110	CAD-32 F7	086446
3	2	240	CAD-32 U7	086666
5	-	110	CAD-50 B7	086763
5	-	240	CAD-50 F7	086857
5	-	24	CAD-50 U7	087018

No. of Contacts		Coil Voltage DC	Ref No.	Order No. 8677
N/O	N/C			
3	2	24	CAD-32 BD	086352
5	-	24	CAD-50 BD	086776



On Delay Auxiliary Contact Block

For type CAD Relays.

No. of Contacts		Time Range Seconds	Ref No.	Order No. 8677
N/O	N/C			
1	1	0.1 - 3s	LAD-T0	093633
1	1	0.1 - 30s	LAD-T2	093646
1	1	10 - 130s	LAD-T4	093659



SIEMENS

SIRIUS 4 Pole Contactor Relays - Type 3RH

No. of Contacts N/O	N/C	Coil Voltage 50/60Hz	Ref No.	Order No. 7788
4	-	24	3RH11 40-1AB00	014557
4	-	110	3RH11 40-1AF00	990082
4	-	230	3RH11 40-1AP00	990150
3	1	24	3RH11 31-1AB00	013927
3	1	110	3RH11 31-1AF00	990024
3	1	230	3RH11 31-1AP00	990037
2	2	24	3RH11 22-1AB00	013244
2	2	110	3RH11 22-1AF00	013273
2	2	230	3RH11 22-1AP00	013354

No. of Contacts N/O	N/C	Coil Voltage DC	Ref No.	Order No. 7788
4	-	24	3RH11 40-1BB40	990231
3	1	24	3RH11 31-1BB40	990066
2	2	24	3RH11 22-1BB40	013435



SIEMENS

SIRIUS Auxiliary Contacts

For type 3RH contactor relays.

N/O	N/C	Ref No.	Order No. 7788
2	-	3RH1911-1FA20	990325
1	1	3RH1911-1FA11	990312
4	-	3RH1911-1FA40	990367
3	1	3RH1911-1FA31	990354
2	2	3RH1911-1FA22	990338



Chronos 2 Multifunction Timer 17.5mm DIN Rail Mounting

Voltage range: 24VDC / 24 to 240VAC

Timing range: 0.1s to 100h

1 x changeover relay output - screw terminals.

Norminal rating 8A

LED status indicator

Function: Delay on energisation (A)
 Delay on energisation with memory (At)
 Timing on impulse one shot (B)
 Timing after impulse (C)
 Timing on energisation (H)
 Timing on energisation with memory (Ht)
 Symetrical flip flop, pulse start (Di)
 Symetrical flip flop, pause start (D)
 Delay timing after closing & opening of a control contact (Ac)
 Timing after closing & opening of a control contact (Bw)

Description	Ref No.	Order No.
MUR1	88 826 105	990368



Chronos 2 Off Delay Timer 17.5mm DIN Rail Mounting

Voltage range: 24VDC / 24 to 240VAC

Timing range: 0.6s to 160h

2 x changeover relay output - screw terminals.

Norminal rating 8A

LED status indicator

Function: Delay on de-energisation (K)

Description	Ref No.	Order No.
TK2R1	88 652 65	990575

Pushbutton & Actuators



SIEMENS

SIGNUM Pushbutton with Flat Button with Holder - IP67

Metal Version 22mm.

Description	Ref No.	Order No. 7788
Black	3SB3500-0AA11	990529
Red	3SB3500-0AA21	990532
Yellow	3SB3500-0AA31	990545
Green	3SB3500-0AA41	990561
Blue	3SB3500-0AA51	990587
White	3SB3500-0AA61	001719



SIEMENS

SIGNUM Indicator Lights with Holder - IP67

Metal Version 22mm.

With lens & concentric rings.

Description	Ref No.	Order No. 7788
Red	3SB3501-6BA20	990752
Yellow	3SB3501-6BA30	990765
Green	3SB3501-6BA40	990778
Blue	3SB3501-6BA50	001971
White	3SB3501-6BA60	001984
Clear	3SB3501-6BA70	001997



SIEMENS

SIGNUM Pushbutton Contact Blocks

Metal Version 22mm.

Screw terminals.

Description	Ref No.	Order No. 7788
1 NO	3SB3400-0B	993830
1 NC	3SB3400-0C	991353
1 NO + 1NC	3SB3400-0A	990299
2 NO	3SB3400-0D	990341
2 NC	3SB3400-0E	991366



SIEMENS

SIGNUM Emergency Stop with Holder - IP67

Metal Version 22mm.

RED Dia. 40mm with positive latching function to EN 418.

Description	Ref No.	Order No. 7788
Pull to Unlatch	3SB3500-1TA20	990600
Unlatching by Turning the Knob to the Left	3SB3500-1HA20	990590
With RONIS Safety Lock ON - OFF Supplied with 2 Keys, Unlatching Only with Key	3SB3500-1BA20	004321
Round Yellow Backing Plate Self Adhesive, External Dia. 80mm	3SB3921-0AD	990943



SIEMENS

SIGNUM Selector Switches with Holder - IP67

Metal version 22mm.

Description	Ref No.	Order No. 7788
2 Position		
0-1 Maintained	3SB3500-2PA11	001845
0-1 Momentary Return From Right	3SB3500-2QA11	001858
3 Position		
1-0-11 Maintained L&R	3SB3500-2SA11	990626
1-0-11 Momentary L&R	3SB3500-2TA11	990639



SIEMENS

SIGNUM Lampholder BA9s without Lamp

Description	Ref No.	Order No. 7788
BA9S Holder	3SB3400-1A	993937
6V Incandescent Lamp	3SX1342	230205
12V Incandescent Lamp	3SX1343	230218
24V Incandescent Lamp	3SX1344	230221
110V Incandescent Lamp	3SX1731	981554



SIEMENS

SIGNUM Lampholder with Integrated LED

50mm mounting depth.

Description	Ref No.	Order No. 7788
-------------	---------	----------------

AC 24V

Yellow	3SB3400-1PA	004376
Red	3SB3400-1PB	004389
Green	3SB3400-1PC	990406
Blue	3SB3400-1PD	004402
White	3SB3400-1PE	990419

AC 110V

Yellow	3SB3400-1QA	004428
Red	3SB3400-1QB	004431
Green	3SB3400-1QC	004444
Blue	3SB3400-1QD	004456
White	3SB3400-1QE	004460

AC 230V

Yellow	3SB3400-1RA	990422
Red	3SB3400-1RB	990435
Green	3SB3400-1RC	004499
Blue	3SB3400-1RD	990448
White	3SB3400-1RE	990451



SIEMENS

SIGNUM Label Holder

Metal version 22mm.

Description	Ref No.	Order No. 7788
-------------	---------	----------------

Label Holder For 12.5 x 27mm Insert	3SB3922-0AV	993885
Blank Insert Plate 12.5mm x 27mm	3SB3902-1AA	990930



'Harmony ZB4' Pushbutton Head Flush - IP65

Metal Version 22mm.

Description	Ref No.	Order No. 8677
-------------	---------	----------------

Black	ZB4-BA2	057747
Green	ZB4-BA3	057750
Red	ZB4-BA4	057763
Yellow	ZB4-BA5	057776
Blue	ZB4-BA6	057789



'Harmony ZB4' Pilot Light Heads - IP65

For BA9s bulbs - Incandescent, Neon or Cluster LED.

Description	Ref No.	Order No. 8677
-------------	---------	----------------

Metal Version 22mm

White	ZB4-BV01	059868
Green	ZB4-BV03	059871
Red	ZB4-BV04	059884
Yellow	ZB4-BV05	059897
Blue	ZB4-BV06	059907

For 'Protected LED' Body Only. 100,000 Hrs Life LED.

White	ZB4-BV013	059923
Green	ZB4-BV033	059936
Red	ZB4-BV043	059949
Yellow	ZB4-BV053	059952
Blue	ZB4-BV063	059965



'Harmony ZB4' Selector Switch Standard - IP65

Metal Version 22mm.

Description	Ref No.	Order No. 8677
-------------	---------	----------------

2 Position

Stay Put	ZB4-BD2	059059
Spring Return Right to Left	ZB4-BD4	059075

3 Position

Stay Put	ZB4-BD3	059062
Spring Return to Centre	ZB4-BD5	059088



'Harmony ZB4' Mushroom Head Red - IP65

Metal Version 22mm.

40mm Diameter.

Description	Ref No.	Order No. 8677
-------------	---------	----------------

Trigger Action, Turn to Release	ZB4-BS844	058995
---------------------------------	-----------	--------

Turn to Release	ZB4-BS54	058872
-----------------	----------	--------

Push / Pull	ZB4-BT4	058814
-------------	---------	--------

Pushbutton & Actuators



'Harmony ZB4' Key Switch Head

Metal Version 22mm.

Description	Ref No.	Order No. 8677
2 Position		
Stay Put, Key Removable in Left Position	ZB4-BG2	059237
Stay Put, Key Removable in Left/Right Position	ZB4-BG4	059240
Spring Return to the Left, Key Removable in Left Position	ZB4-BG6	059253

3 Position

Description	Ref No.	Order No. 8677
Stay Put, Key Removable in Centre Position	ZB4-BG3	059279



'Harmony ZB4' Complete Body / Fixing Collar

N/O	N/C	Ref No.	Order No. 8677
1	-	ZB4-BZ101	057598
-	1	ZB4-BZ102	057608
2	-	ZB4-BZ103	057611
-	2	ZB4-BZ104	057624
1	1	ZB4-BZ105	057637
Collar Only		ZB4-BZ1009	062305



'Harmony ZB4' Pilot Light Body

Description	Ref No.	Order No. 8677
Direct supply > 250V BA9s Bulb 2.4W (Order Incandescent, Neon, LED Bulb Separately)	ZB4-BV6	059677
Integral Transformer 110...120VAC - Bulbs Included	ZB4-BV3	059680
Integral Transformer 230...240VAC - Bulbs Included	ZB4-BV4	059693

With 'Protected LED'

White 24V AC/DC	ZB4-BVB1	059376
Green 24V AC/DC	ZB4-BVB3	059389
Red 24V AC/DC	ZB4-BVB4	059392
Yellow 24V AC/DC	ZB4-BVB5	059402
Blue 24V AC/DC	ZB4-BVB6	059415
White 48...120VAC	ZB4-BVG1	059428
Green 48...120VAC	ZB4-BVG3	059431
Red 48...120VAC	ZB4-BVG4	059444
Yellow 48...120VAC	ZB4-BVG5	059457
Blue 48...120VAC	ZB4-BVG6	059460
White 230...240VAC	ZB4-BVM1	059473
Green 230...240VAC	ZB4-BVM3	059486
Red 230...240VAC	ZB4-BVM4	059499
Yellow 230...240VAC	ZB4-BVM5	059509
Blue 230...240VAC	ZB4-BVM6	059512



'Harmony ZB4' Contact Block

Description	Aux. N/O	Contacts N/C	Ref No.	Order No. 8677
Standard Single Block	1	-	ZBE-101	062224
Standard Single Block	-	1	ZBE-102	062240



'Harmony ZB4' BA9s Bulbs

Desc.	Rating	Col.	Ref No.	Order No. 8677
Incandescent	24V - 2W	-	DL1-CE024	000370
Incandescent	120...13V	-	DL1-CE130	000396
	2.4W			
Neon	120...130V	-	DL1-CF110	004774
Neon	230...240V	-	DL1-CF220	004787

LED Mounted on BA9s Base

LED	24V AC/DC	White	DL1-CJ0241	120632
LED	24V AC/DC	Green	DL1-CJ0243	046745
LED	24V AC/DC	Red	DL1-CJ0244	047197
LED	24V AC/DC	Yellow	DL1-CJ0245	086307



'Harmony ZB4' Label Holder & Labels

Description	Ref No.	Order No. 8677
Label Holder 30 x 40mm (for 8 x 27mm legends) with Blank Label Red/Black	ZBY-2101	054494
Label holder 30 x 40mm (for 8 x 27mm legends) with Blank Label White/Yellow	ZBY-4101	054504
Label holder 30 x 50mm (for 18 x 27mm legends) with Blank Label Red/Black	ZBY-6101	056405
Label holder 30 x 50mm (for 18 x 27mm legends) with Blank Label White/Yellow	ZBY-6102	056418

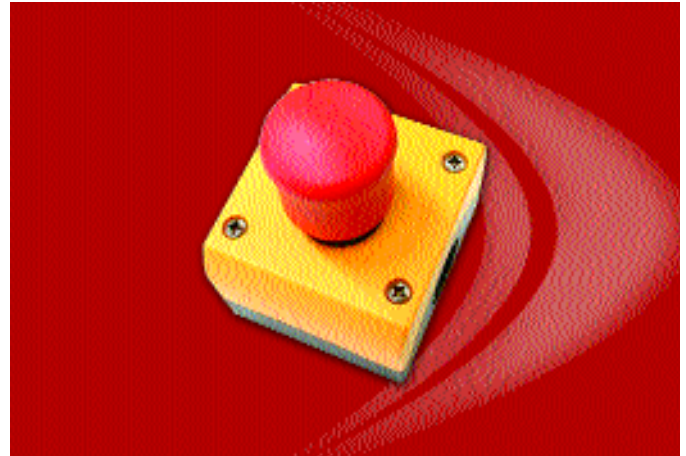
Enclosed Pushbutton & Foot Switch



E-T-N | **MEM**

Pushbutton Station Plastic Enclosed - IP65

Description	Ref No.	Order No. 6450
Stop Button	21MSU	058826
Stop, Latching (Push To Latch, Turn To Release)	21MSUL	058884
Stop Mushroom Head 50mm Diameter (Push To Latch, Turn To Release)	21MSUML	058936
Start / Stop Button	22MSU	058839



MOELLER

Pushbutton Station - Emergency Stop IP67

Yellow plastic enclosure.
Emergency stop actuator.
1N/O & 1 N/C contact.
Other options available.

Description	Ref No.	Order No. 6183
Red Emergency Stop (Stay Put, Pull To Release To EN418)	M22-PV/KC11/Y	051844

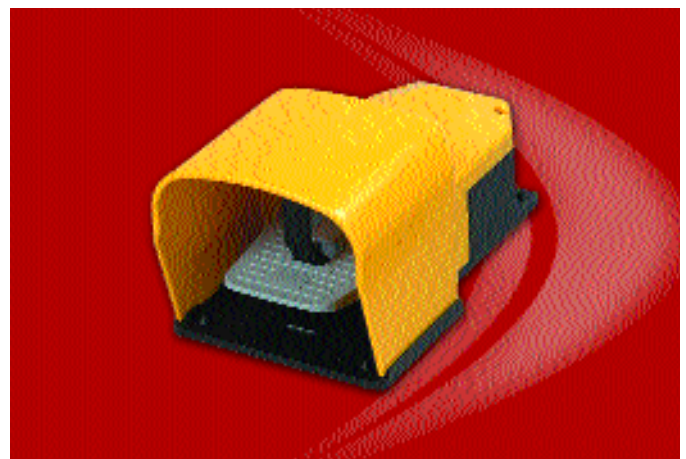


MOELLER

High Visibility Pushbutton Station - Foot & Palm Switches IP67, IP69K

Yellow plastic enclosure.
Emergency stop actuator.
1N/O & 1 N/C contact.

Description	Ref No.	Order No. 6183
Red Emergency Stop, High Visibility (Stay Put, Pull To Release To EN418)	FAK-RV/KC11/Y	132064



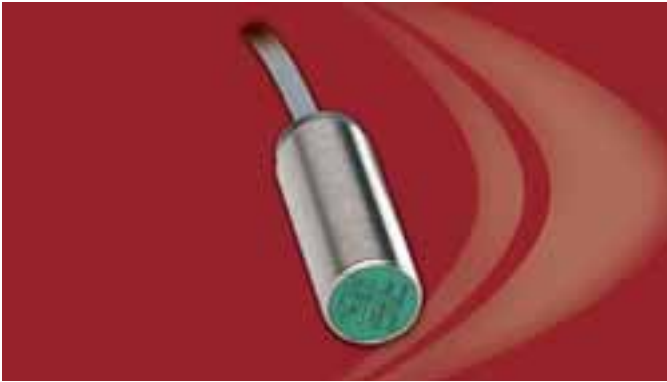
IMO

Metal Footswitch - IP65

Impact resistant glass reinforced thermoplastic housing.
Pedal interlock lever to prevent operation unless operator's foot is fully in shroud.
Positive break of NC contact for safety circuits.
Cable entry hole with PG13.5 thread.

Description	Ref No.	Order No. 5059
Shrouded Footswitch with 1N/O & 1N/C Snap Action Contact	FT01C	003820

Proximity Switches



PEPPERL & FUCHS Inductive Proximity Switches

Cylindrical nickel plated brass IP67.

Flush mountable.

10-30V DC, PNP, 1N/O 200mA (100mA for 1.5mm version).

2M cable.

Body length 50mm.

Sensing Range	Barrel Diameter	Ref No.	Order No. 0865
1.5mm	M8	NBB1.5-8GM40-E2	992586
2mm	M12	NBB2-12GM50-E2	992706
5mm	M18	NBB5-18GM50-E2	992324



PEPPERL & FUCHS 'Varikont' Inductive Proximity Switches

Plastic plug in housing IP66.

DC Version:

10 - 60V DC, PNP, 1N/O 3 wire terminal connection.

Operating current 0 - 200mA.

AC Version:

20 - 253V AC, 1N/O or 1 N/C - 2 wire terminal connection.

Operating current 8 - 500mA.

Five position sensing head.

Overall dimensions 118mm x 40mm x 40mm.

Sensing Range	DC Version		AC Version	
	Ref No.	Order No.	Ref No. 0865	Order No. 0865
15mm	NJ15-U1-E2	991460	NJ15-U1-W	990876
20mm	NJ20-U1-E2	992764	NJ20-U1-W	990960



V18 Series Photo - Electric Sensors

Plastic housing M18 - IP67:

10 - 30V DC.

PNP 100mA output.

2M fixed cable.

Through beam & Reflex - Dark switching.

Diffuse version - Light switching.

All Reflex versions have polarising filters.

Short circuit & overload protection.

Nickel plated brass M18 - IP67:

10 - 30V DC.

PNP 100mA output.

Adjustable sensitivity (Except reflex version).

2M fixed cable.

Light/Dark wiring selectable.

All Reflex versions have polarising filters.

Short circuit & overload protection.

Description	Operating Distance	Ref No.	Order No. 7793
-------------	--------------------	---------	----------------

Plastic Housing M18 - IP67

Through Beam With Transmitter & Receiver	14M	VS/VE18-3P3612	991335
Reflex (Order Reflector Separately)	3M	VL18-3P3612	991296
Diffuse	100mm	VTF18-3F1612	991160
Diffuse	400mm	VTE18-3F4612	991377
Reflector Dia. 83mm Centre Hole Mounting		C110	990307

Nickel Plated Brass M18 - IP67

Through Beam With Transmitter & Receiver	14M	VS/VE18-4P3212	991351
Reflex (Order reflector separately)	3M	VL18-4P3112	991319
Diffuse	100mm	VTF18-4P1212	991416
Diffuse	400mm	VTE18-4P4212	991380
Reflector Dia. 83mm Centre Hole Mounting		C110	990307



Transformers Solutions Coil Winding Power Supplies Power Distribution

Easy Fix Transformers - Isolating

Colour Coded for easy identification

All Complete with Earth Screen

Din-Rail mounted available up to 200VA

Unique IP 20 flip top terminal cover

VA	Order No.	Ref No. 3544
400 - 110V AC		
50	EB50	990204
100	EB100	990110
150	EB150	990136
200	EB200	990152
250	EB250	990178
350	EB350	990194
500	EB500	990217
750	EB750	990220
1000	EB1000	990123

400 - 24V AC		
50	EE50	990550
100	EE100	990495
150	EE150	990518
200	EE200	990521
250	EE250	990534
350	EE350	990547
500	EE500	990563
750	EE750	990576
1000	EE1000	990505

230 - 110V AC		
50	EC50	990327
100	EC100	990233
150	EC150	990259
200	EC200	990275
250	EC250	990292
350	EC350	990314
500	EC500	990343
750	EC750	990356
1000	EC1000	990246

230 - 24V AC		
50	ED50	990466
100	ED100	990369
150	ED150	990385
200	ED200	990408
250	ED250	990437
350	ED350	990453
500	ED500	990479
750	ED750	990482
1000	ED1000	990372

Sizes up to 5kVA available on request



Phoenix TRIO

Input Voltage Single phase 86 - 264V AC 50/60Hz
Three phase 329 - 575V AC 50/60Hz

Output voltage 24V DC

DIN rail mounting

Degree of protection IP20

Description	Current Rating (A)	Part No.	Order No. 6687
1 Phase	2.5	2966268	013155
1 Phase	5	2866310	013294
1 Phase	10	2866323	013304
1 Phase	20	2866381	013317
3 Phase	5	2866462	013320
3 Phase	10	2866488	013333
3 Phase	20	2866491	013346
3 Phase	40	2866501	013359



SIEMENS

SITOP Switch Mode Power Supplies

Input Voltage.

Single phase 120/230V AC 50/60Hz.

Three phase 400/500V AC 50/60Hz.

Output voltage 24V DC.

DIN rail mounting.

Degree of protection IP20.

Description	Current Rating (A)	Ref No.	Order No. 7788
1 Phase	2	6EP1331-2BA10	996044
1 Phase	5	6EP1333-2BA01	991434
1 Phase	10	6EP1334-2BA01	991489
3 Phase	10	6EP1434-2BA00	991515
3 Phase	20	6EP1436-2BA00	991560
3 Phase	40	6EP1437-2BA10	991573

Enclosed Starters



EAT-N | MEM

Direct On Line Metal Clad Motor Starter Type ADS8

Fitted with Start and Stop/Reset Pushbuttons.

Order overload separately.

AC3 415V (A)	AC3 415V (kW)	Coil Voltage 50Hz	Ref No.	Order No. 6450
18	9	220/240	28ADS1X	076361
18	9	380/415	48ADS1X	076604

ABB

EPACK Direct On Line Starters IP65 Plastic & Metal Enclosures

3 Phase up to 7.5kW.

Without overload - order separately.

AC3 415V (kW)	Coil Voltage 50/60Hz	Overload Range (A)	Ref No.	Order No. 1933
---------------------	----------------------------	--------------------------	---------	-------------------

Direct on line - Plastic Enclosure - IP66

5.5	230	10.0 - 12.0	122EXE0D-OL	063139
5.5	400	10.0 - 14.0	124EXE0D-OL	070591
7.5	230	13.0 - 19.0	182EXE0D-OL	063278
7.5	400	13.0 - 19.0	184EXE0D-OL	063333

Direct on line - Metal Enclosure - IP65

5.5	230	10.0 - 12.0	122EXE1D-OL	078315
5.5	400	10.0 - 14.0	124EXE1D-OL	063197
7.5	230	13.0 - 19.0	182EXE1D-OL	078328
7.5	400	13.0 - 19.0	184EXE1D-OL	063359

Direct on line Reversing - Plastic Enclosure - IP65

7.5	230	13.0 - 19.0	182EXE2DR-OL	063317
7.5	400	13.0 - 19.0	184EXE2DR-OL	063391

ABB

Thermal Overloads

For 'EPACK' Enclosed Starters

Setting Range (A)	Ref No.	Order No. 1933
2.2 - 3.1	TA25DU3.1	048620
2.8 - 4.0	TA25DU4.0	048633
4.5 - 6.5	TA25DU6.5	048659
7.5 - 11.0	TA25DU11	048675
10.0 - 14.0	TA25DU14	048688
13.5 - 19.0	TA25DU19	048691



EAT-N | MEM

Thermal Overloads

For Eaton MEM Enclosed Starters.

Rating	Ref No.	Order No. 6450
0.63 - 1.0	8TT87	076484
1.0 - 1.6	8TT88	076497
1.6 - 2.5	8TT89	076507
2.5 - 4.0	8TT90	076510
4.0 - 6.0	8TT91	076523
7.0 - 10.0	8TT92	076536
10 - 13	8TT93	076549
13 - 18	8TT94	076552



FAT-N | **MEM**

Heating & Lighting Contactors Coil Voltage 230/240V 50Hz AC

No. of Poles	Terminal Capacity	Heating Load Per Pole (A)	Lighting Load Per Pole (A)	Ref No.	Order No. 6450
--------------	-------------------	---------------------------	----------------------------	---------	----------------

Open Contactor

4	2 x 2.5mm ²	25	15	22ACI	037423
4	2 x 16mm ²	50	32	42ACI	037465

Enclosed Contactor - Without Rectifier

1	1 - 50mm ²	70	50	228ALCSPN	076866
1	1 x 50mm ²	120	50	428ALCSPN	076934

2	1 - 25mm ²	40	25	228ALCDP	076837
2	1 x 50mm ²	80	40	428ALCDP	076895

4	2 x 2.5mm ²	25	15	228ALCFP	076824
4	2 x 16mm ²	50	32	428ALCFP	076918

Enclosed Contactor - With Rectifier

1	1 - 50mm ²	70	50	228ALCSPNR	076879
1	1 x 50mm ²	120	50	428ALCSPNR	076947

2	1 - 23mm ²	40	25	228ALCDPR	076840
2	1 x 50mm ²	80	40	428ALCDPR	076905

4	2 x 2.5mm ²	25	15	228ALCFPR	076853
4	2 x 16mm ²	50	32	428ALCFPR	076921



Weidmüller

SAK Series Terminals

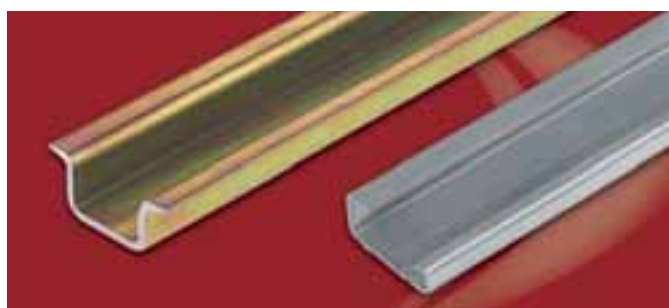
For TS32 ('G' Type) DIN Rails.

Description	Material	Ref No.	Order No. 5385
SAK 2.5	Polyamide	0279660000	005042
SAK 4	Polyamide	0128360000	000306
SAK 6N	Polyamide	0193260000	001790
SAK 10	Polyamide	0110060000	000089
SAK 16	Polyamide	0271060000	004438
SAK 35N	Polyamide	0550660000	019067

Weidmüller

SAK Series Earth Terminals & Accessories

Description	Ref No.	Order No. 5385
EK 2.5 Earth Terminal	047436	015281
EK 4 Earth Terminal	035456	009103
EK 10 Earth Terminal	035466	009129
EK 16 Earth Terminal	037466	010066
EK 35 Earth Terminal	035476	009145
AP 2.5 End Cover - Beige	027956	004991
AP 4/10 End Cover - Beige	011796	000157
AP 16 End Cover - Beige	027116	017302
AP 35 End Cover - Beige	030366	029866
EWK1 End Stop	020616	002993



Weidmüller

Terminal Rails

Description	Ref No.	Order No. 5385
TS32 (STD G Type) 2M Length	012280	000173
TS35 (STD Top Hat) 2M Length	038340	010257

Panel Terminals & Steel Enclosures



W Series Terminals

For TS35 (Top Hat) DIN Rails.

Weidmüller W series terminals features 'Low Tox', 'Low Smoke', 'Halogen Free'.

Wemid insulation material, making them suitable for many critical applications.

Rating	Ref No.	Order No. 5385
WDU 2.5	102000000	033483
WDU 4	102010000	033506
WDU 6	102020000	033522
WDU 10	102030000	033548
WDU 16	102040000	033564
WDU 35	102050000	033580



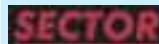
W Series Earth Terminals & Accessories

Description	Ref No.	Order No. 5385
WPE 2.5 Earth Terminal	101000	033263
WPE 4 Earth Terminal	101010	033276
WPE 6 Earth Terminal	101020	033289
WPE 10 Earth Terminal	101030	033292
WPE 16 Earth Terminal	101040	033302
WPE 35 Earth Terminal	101050	033315
WAP 2.5/10 End Cover - Beige	105000	033629
WAP 16/36 End Cover - Beige	105010	033645
EW35 End Stop	038356	010260



Angled Support Bracket

Description	Ref No.	Order No. 5385
TS TW	016400	000937



Wall Mounted Steel Enclosures - IP66

Grey RAL 7032 colour.

Polyurethane gasket and rain gutter.

Perforated door reinforcements allow equipment to be mounted inside the door.

Reversible door, with an opening of 120° in either direction.

Complete with earth studs.

Includes galvanised mounting plate.

IP66 Rating.

Dimensions (mm)	Ref No.	Order No. 0001	Price	
			Each	5+
250 x 300 x 150	SEFEF253015	147250	36.11	33.85
300 x 300 x 150	SEFEF303015	120455	39.70	37.62
300 x 300 x 200	SEFEF303020	120468	42.60	40.39
300 x 400 x 200	SEFEF304020	120471	56.16	53.61
400 x 500 x 200	SEFEF405020	120484	67.18	63.11
400 x 600 x 200	SEFEF406020	120497	69.49	66.65
600 x 600 x 200	SEFEF606020	120507	91.80	84.69
600 x 600 x 250	SEFEF606025	147522	94.40	87.11
600 x 800 x 300	SEFEF608030	120510	133.01	123.27
800 x 800 x 300	SEFEF808030	120523	166.44	156.42
800 x 1000 x 300	SEFEF8010030	120536	189.80	178.79
Cylinder Key Lock Kit -	SA23302	120549	10.55	10.26



Steel Enclosures



Wall Mounted Steel Enclosures Universal Spacial 3D - IP66

Single door Complete with mounting plate.

130 degree door opening.

Easily reversible door.

Light grey finish to RAL 7032

Dimensions (mm) (H x W x D)	Enclosures Ref No.	Order No. 7618
300 x 200 x 150	ENN83315	000123
300 x 300 x 150	ENN83302	000097
300 x 300 x 200	ENN83303	000107
400 x 300 x 150	ENN83317	000136
300 x 400 x 150	ENN83312	000110
400 x 300 x 200	ENN83318	000149
400 x 400 x 200	ENN83319	000152
400 x 600 x 200	ENN83331	000343
400 x 600 x 250	ENN83332	000356
500 x 300 x 200	ENN83321	000165
500 x 400 x 200	ENN83323	000181
500 x 400 x 250	ENN83324	000204
500 x 500 x 200	ENN83322	000178
500 x 500 x 250	ENN83325	000220
600 x 400 x 200	ENN83326	000246
600 x 400 x 250	ENN83327	000262
600 x 600 x 200	ENN83328	000288
600 x 600 x 250	ENN83329	000301
600 x 600 x 300	ENN83330	000327
600 x 600 x 400	ENN83339	000408
600 x 800 x 300	ENN83337	000398
700 x 500 x 250	ENN83335	000372
800 x 600 x 200	ENN83343	000437
800 x 600 x 250	ENN83356	000505
800 x 600 x 300	ENN83357	000518

Larger sizes available on request



Wall Mounted Stainless Steel Enclosures Spacial - IP66

Single door.

130 degree door opening.

Totally symmetrical enclosure.

Reversal of door opening by inversion of enclosure.

Polished/Brushed stainless steel.

(Stainless Steel 316 available on request)

**Requires brackets for wall mounting please order separately.

Dimensions (mm) H x W x D	Enclosure Ref No.	Order No 7618	Mounting plate plain Ref No.	Order No 7618
300 x 200 x 150	ENN54915	039521	ENN55715	039327
300 x 300 x 150	ENN54902	039534	ENN55702	039301
400 x 300 x 150	ENN54917	039547	ENN55712	039314
400 x 300 x 200	ENN54918	039550	ENN55712	039314
400 x 400 x 200	ENN54919	039563	ENN55719	039330
500 x 400 x 200	ENN54923	039576	ENN55723	039356
600 x 400 x 200	ENN54926	039589	ENN55726	039372
600 x 600 x 250	ENN54929	039602	ENN55729	039385
700 x 500 x 250	ENN54935	039615	ENN55735	039398
800 x 600 x 250	ENN54956	039631	ENN55756	039408
800 x 800 x 300	ENN54946	039628	ENN55745	039411
**Wall fixing brackets	ENN53496	039660		

Larger sizes available on request

Steel Enclosures



Wall Mounted Steel Enclosures MultiMount - IP66

Single door Complete with mounting plate.

130 degree door opening.

Door can be mounted to allow left hand or right hand opening.

Light grey finish to RAL 7035 (RAL 7032 available on request).

Dimensions (mm). (H x W x D)	Enclosures Ref No.	Order No. 3510
200 x 200 x 155	MAS0202015R5	068568
250 x 200 x 155	MAS0252015R5	068584
250 x 250 x 155	MAS0252515R5	068607
300 x 250 x 155	MAS0302515R5	068623
300 x 250 x 210	MAS0302521R5	068649
300 x 300 x 155	MAS0303015R5	068665
300 x 300 x 210	MAS0303021R5	068681
350 x 250 x 155	MAS0352515R5	068704
400 x 300 x 155	MAS0403015R5	068720
400 x 300 x 210	MAS0403021R5	068746
400 x 400 x 210	MAS0404021R5	068762
400 x 500 x 210	MAS0405021R5	068788
400 x 600 x 210	MAS0406021R5	068801
500 x 300 x 210	MAS0503021R5	068827
500 x 400 x 155	MAS0504015R5	068843
500 x 400 x 210	MAS0504021R5	068869
500 x 400 x 260	MAS0504026R5	072033
500 x 400 x 300	MAS0504030R5	068898
500 x 500 x 210	MAS0505021R5	068911
500 x 500 x 300	MAS0505030R5	068937
600 x 400 x 155	MAS0604015R5	068953
600 x 400 x 210	MAS0604021R5	068979
600 x 400 x 260	MAS0604026R5	068995
600 x 400 x 300	MAS0604030R5	069017
600 x 500 x 155	MAS0605015R5	069033
600 x 500 x 210	MAS0605021R5	069059
600 x 500 x 260	MAS0605026R5	069075
600 x 500 x 300	MAS0605030R5	069091
600 x 600 x 210	MAS0606021R5	069114
600 x 600 x 300	MAS0606030R5	069130
600 x 600 x 400	MAS0606040R5	069156
600 x 800 x 300	MAS0608030R5	069172
700 x 500 x 210	MAS0705021R5	069198
700 x 500 x 260	MAS0705026R5	069211
800 x 400 x 300	MAS0804030R5	069237
800 x 600 x 210	MAS0806021R5	069253
800 x 600 x 260	MAS0806026R5	069279
800 x 600 x 300	MAS0806030R5	069295
800 x 600 x 400	MAS0806040R5	069318
800 x 800 x 210	MAS0808021R5	069334
800 x 800 x 300	MAS0808030R5	072046



Wall Mounted Stainless Steel Enclosures MultiMount - IP66

Single door Complete with mounting plate.

130 degree door opening.

Door can be mounted to allow left hand or right hand opening.

304 S15 pre-grained stainless.

(Stainless steel 316 available on request)

**Requires brackets for wall mounting please order separately.

Dimensions (mm). (H x W x D)	Enclosures Ref No.	Order No. 3510
180 x 240 x 150	ASR0182415	050848
240 x 240 x 150	ASR0242415	050851
240 x 360 x 150	ASR0243615	050864
300 x 200 x 150	ASR0302015	050877
360 x 240 x 150	ASR0362415	050880
400 x 300 x 150	ASR0403015	050932
400 x 400 x 210	ASR0404021	050945
400 x 600 x 210	ASR0406021	050958
500 x 400 x 210	ASR0504021	063220
500 x 500 x 210	ASR0505021	051009
600 x 400 x 210	ASR0604021	051038
600 x 600 x 210	ASR0606021	051041
600 x 600 x 300	ASR0606030	051054
600 x 800 x 300	ASR0608030	051067
800 x 600 x 210	ASR0806021	051096
800 x 600 x 300	ASR0806030	051106
800 x 800 x 300	ASR0808030	051122
1000 x 800 x 300	ASR1008030	051135
1200 x 800 x 300	ASR1208030	051151
1200 x 800 x 400	ASR1208040	051164
1400 x 800 x 400	ASR1408040	051177
**Wall Brackets	AWS41	051193