



### PREMIER SLEEK T5 & T8

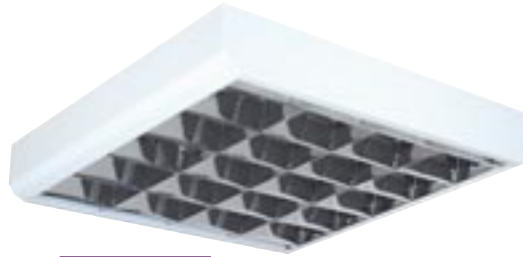
A versatile surface mounted linear and modular luminaire, with attractive low profile body and many different sizes. The Premier SLEEK T5 has the benefit of using the new T5 lamp and control gear technology for more powerful and efficient luminaires



IP20

#### SPECIFICATION

- T8 versions require lamps
- T5 versions include colour 840 tubes
- A comprehensive range of controllers include CIBSE LG3(2001) C2 65° louvres, low brightness and prismatic panels
- Compatible with all generally used control gear and emergency options
- T8 version has a full steel body, white polyester coated
- T5 louvres are retained with shoot bolts
- Lift & tilt louvre within fitting body



#### PREMIER SLEEK T8 SURFACE

Part No.	Description	Width	Code
<b>600x600</b>			
FMPRSLK663HF*	3x18W	600mm	4726
FMPRSLK664HF*	4x18W	600mm	4726
<b>1200x600</b>			
FMPRSLK1263HF*	3x36W	600mm	4727
FMPRSLK1264HF*	4x36W	600mm	4727

\* Control Gear and Louvre options are Required

#### PREMIER SLEEK T5 SURFACE

Part No.	Description	Width	Code
<b>600 (2ft)</b>			
FMSLKT5314*	3x14W T5 HE	440mm	4726
FMSLKT5414*	4x14W T5 HE	440mm	4726

\* Control Gear and Louvre options are Required

#### PREMIER SLEEK T5 SURFACE AND SUSPENDED

Part No.	Description	Width	Code
<b>1200 (4ft)</b>			
FMSLKT5128*	1x28W T5 HE	190mm	4720
FMSLKT5154*	1x54W T5 HO	190mm	4720
FMSLKT5228TB*	2x28W T5 HE	275mm	4721
FMSLKT5254TB*	2x54W T5 HO	275mm	4721
<b>1500 (5ft)</b>			
FMSLKT5135*	1x35W T5 HE	190mm	4722
FMSLKT5149*	1x49W T5 HO	190mm	4722
FMSLKT5180*	1x80W T5 HO	190mm	4722
FMSLKT5235TB*	2x35W T5 HE	275mm	4723
FMSLKT5249TB*	2x49W T5 HO	275mm	4723
FMSLKT5280TB*	2x80W T5 HO	275mm	4723

\* Control Gear and Louvre options are Required

#### PREMIER SLEEK T5 SUSPENDED

Part No.	Description	Width	Code
<b>1200 (4ft)</b>			
FMSLKT5228*	2x28W T5 HE	190mm	4721
FMSLKT5254*	2x54W T5 HO	190mm	4721
<b>1500 (5ft)</b>			
FMSLKT5235*	2x35W T5 HE	190mm	4723
FMSLKT5249*	2x49W T5 HO	190mm	4723
FMSLKT5280*	2x80W T5 HO	190mm	4723

\* Control Gear and Louvre options are Required

#### PREMIER SLEEK SUSPENSION ACCESSORIES

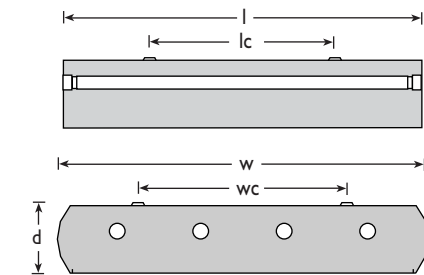
Part No.	Description
FMSUST5/KIT2	2x3M Wire Suspension for 190mm body
FMSUST5/KIT4	4x3M Wire Suspension for 275mm body

Suffix:

- Control Gear Options
- E3 = Integral 3 hour Maintained Emergency
- HFR = 1-10V HF Analogue Dimmable
- SD = Switch Dim
- DSI = Digital Dimming

Light Controller Options

- C2 = Cat 2 Louvre
- SL = Standard Louvre
- TPA = TP(a) Fire rated Diffuser
- ID = Indirect Backlight/Uplight via slots in rear of fitting



#### DIMENSION TABLE (mm):

	l	c	ls	ws	d
<b>T8</b>					
600x600	622	500	658	400	107
1200x600	1232	1000	658	400	107
<b>T5</b>					
600x440	588	300	440	339	68
1200x190	1188	600	190	87	68
1200x275	1188	600	275	171	68
1500x190	1488	1200	190	87	68
1500x275	1488	1200	275	171	68



#### LAMP GUIDE

See pages 143-145 for a comprehensive lamp guide

