

T5 Battens & Accessories	84-85
T8 Battens & Accessories	86-87
Focus Indirect Luminaires	88
Academy Fully Enclosed Luminaires	89
Sleek, Direct & Indirect Traditional Luminaires	90-91
LiteRun 5 - Continuous Fluorescent Luminaires	92-93
ISO Linear Surface & Suspended	94



T5 BATTENS

T5 LINKABLE BATTEN

A comprehensive range of slimline High Frequency T5 Fluorescent Battens and Accessories using the latest in lamp technology to produce a batten more efficient and more powerful than the conventional T8 version. Ideal for commercial applications from undershelf lighting to high ceilings.



IP20



HIGH EFFICIENCY T5 HE BATTENS

Part No.	Description	Length	Code
Single			
T5B2114H	1X14W T5 HE	2ft (600mm)	5812
T5B3121H	1X21W T5 HE	3ft (900mm)	5813
T5B4128H	1X28W T5 HE	4ft (1200mm)	5814
T5B5135H	1X35W T5 HE	5ft (1500mm)	5815
Twin			
T5B2214H	2X14W T5 HE	2ft (600mm)	5822
T5B3221H	2X21W T5 HE	3ft (900mm)	5823
T5B4228H	2X28W T5 HE	4ft (1200mm)	5824
T5B5235H	2X35W T5 HE	5ft (1500mm)	5825

Polycarbonate diffusers can be used with all HE and single HO Battens

HIGH OUTPUT T5 HO BATTENS

Part No.	Description	Length	Code
Single			
T5B2124Q	1X24W T5 HO	2ft (600mm)	5812
T5B3139Q	1X39W T5 HO	3ft (900mm)	5813
T5B4154Q	1X54W T5 HO	4ft (1200mm)	5814
T5B5149Q	1X49W T5 HO	5ft (1500mm)	5815
T5B5180Q	1X80W T5 HO	5ft (1500mm)	5815
Twin			
T5B2224Q	2X24W T5 HO	2ft (600mm)	5822
T5B3239Q	2X39W T5 HO	3ft (900mm)	5823
T5B4254Q	2X54W T5 HO	4ft (1200mm)	5824
T5B5249Q	2X49W T5 HO	5ft (1500mm)	5825
T5B5280Q	2X80W T5 HO	5ft (1500mm)	5825

Polycarbonate diffusers cannot be used with twin and 80w HO Battens

Suffix:

E3 = 3 Hour Maintained Emergency Pack (Integral)

HFR = Dimmable (Analogue 1-10V)

SD = Switch Dim

DSI = Digital Dimming

Linkable Options:

TW = Through Wired connectors each end of Batten

ER = End of Run wired with a single connector

T5 BATTEN LINKABLE ACCESSORIES

Part No.	Description
PowerLead	
T5BP4/5M	4 Pole 5M HF&E3 Starter Lead
T5BP5/5M	5 Pole 5M HFR&DSI Starter Lead
LinkLead	
T5BL4/	4 Pole HF&E3 Interconnector
T5BL5/	5 Pole HFR&DSI Interconnector

Suffix: /1M to /5M = Lead length in metres

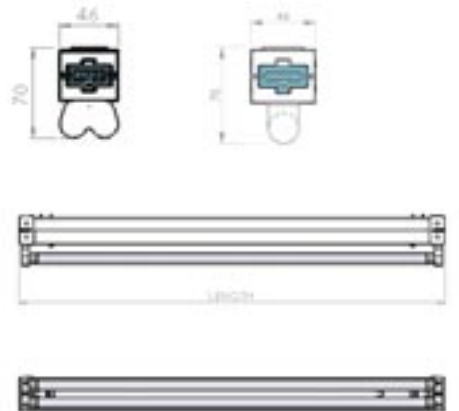


SPECIFICATION

- Fittings come complete with T5 colour 84 fluorescent lamp(s) High Efficiency or High Output lamp(s)
- Slimline body for unobtrusive use or where a limited space is available
- High Frequency control gear as standard
- Choice of reflector accessories available for optimum light distribution

Benefits of using T5 Fluorescent Tubes with HF Gear Include:

- Energy Saving
- High levels of light output
- Improved colour rendition
- Low lumen depreciation
- Long life
- Reduced maintenance costs



DIMENSION TABLE (mm):

	Length	Fixings
2ft	576	440
3ft	876	740
4ft	1176	1040
5ft	1476	1340



IDEAL FOR

- Universities, Schools, Colleges
- Utility Workshops
- Libraries
- Retail
- Factories & Warehouses
- Shops
- Pelmet Lighting

■ IP65 battens see page 96

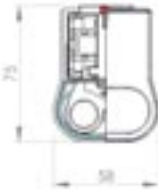


T5 BATTEN ACCESSORIES

A comprehensive range of accessories for the T5 single and twin batten to ensure the light from the tube is effective in applications from domestic to high warehouse ceilings. A new addition to the range is the linking reeded diffuser providing seamless continuous light runs.

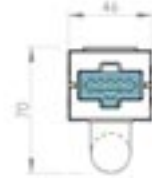
SPECIFICATION

- TP(a) Reeded diffuser with white injection moulded end caps or link pieces
- Due to thermal restrictions these are only suitable for all HE battens and only single HO battens. 80W HO battens cannot be used with prismatic controllers



SPECIFICATION

- Bright white powder coated reflector for symmetrical beam distribution
- Slotted option allows some indirect light spill onto ceiling
- Reflectors do not have end caps (optional extra)



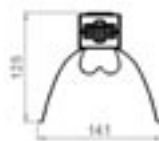
SPECIFICATION

- Bright white powder coated reflector to reduce side glare and direct light



SPECIFICATION

- Highly reflective aluminium reflector for greater mounting heights and more controlled beam distribution



SPECIFICATION

- LG3 1001 65° Louvre for use in office areas or where VDTs are in use
- Only suitable for 28W and 35W HE and 49W HO Battens



SPECIFICATION

- Contemporary indirect attachment factory fitted to T5 Batten
- Featuring Satin blend, plastic optic offering a subtle diffused light output



TPA PRISMATIC REEDED CONTROLLERS

Part No.	Description	Length	Code
T5BPC2H	2ft single/twin HE only	600mm	5832
T5BPC3H	3ft single/twin HE only	900mm	5833
T5BPC4H	4ft single/twin HE only	1200mm	5834
T5BPC5H	5ft single/twin HE only	1500mm	5835

Suffix: /TW = Controller with continuous run link kit

STRAIGHT STEEL REFLECTORS

Part No.	Description	Length	Code
T5BR4	4ft single/twin	1200mm	5844
T5BR5	5ft single/twin	1500mm	5845
T5BR4SLT	4ft single/twin Slotted	1200mm	5844
T5BR5SLT	5ft single/twin Slotted	1500mm	5845

ANGLED STEEL REFLECTORS

Part No.	Description	Length	Code
T5BR4ANG	4ft single/twin	1200mm	5844
T5BR5ANG	5ft single/twin	1500mm	5845

HI RACK ALUMINIUM REFLECTORS

Part No.	Description	Length	Code
T5BR4RACK	4ft single/twin	1200mm	5844
T5BR5RACK	5ft single/twin	1500mm	5845

LOUVRE ATTACHMENTS

Part No.	Description	Length	Code
HE only			
T5BL4C2H	4ft single/twin Cat 2	1200mm	5854
T5BL5C2H	5ft single/twin Cat 2	1500mm	5855
Low Brightness			
T5BL4STD	4ft single/twin	1200mm	5854
T5BL5STD	5ft single/twin	1500mm	5855

INDIRECT T5 BATTEN COMPLETE

Part No.	Description	Length	Code
Satine Indirect			
T5B4128ID	4ft 1X28W HE	1200mm	5814
T5B5135ID	5ft 1X35W HE	1500mm	5815
T5B4154ID	4ft 1X54W HO	1200mm	5814
T5B5149ID	5ft 1X49W HO	1500mm	5815

T8 BATTENS



IP20

T8 FLUORESCENT BATTENS

A comprehensive range of Fluorescent Battens and Accessories to ensure the light from the single or twin tubes is effective in residential through to commercial and Industrial applications. High quality powder coated paint finish with smooth edges. Colour matched injection moulded end caps with alignment pins for continuous mounting.

SECTOR

SECTORPACK II HIGH FREQUENCY BATTENS

Part No.	Description	Code
Single High Frequency		
SBF4136HF	4Ft 1.2m 1 x 36WT8	4106
SBF5135T5	5Ft 1.5m 1 x 35WT5	5815
SBF5149T5	5Ft 1.5m 1 x 49WT5	5815
SBF5158HF	5Ft 1.5m 1 x 58WT8	4108
SBF6170HF	6Ft 1.8m 1 x 70WT8	4110
Single High Frequency Emergency - Maintained		
SBF4136HF E3	4Ft 1.2m 1 x 36WT8	4120
SBF5158HF E3	5Ft 1.5m 1 x 58WT8	4122
SBF6170HF E3	6Ft 1.8m 1 x 70WT8	4124
Twin High Frequency		
SBF4236HF	4Ft 1.2m 2 x 36WT8	4112
SBF5258HF	5Ft 1.5m 2 x 58WT8	4114
SBF6270HF	6Ft 1.8m 2 x 70WT8	4116
Twin High Frequency Emergency - Maintained		
SBF4236HF E3	4Ft 1.2m 2 x 36WT8	4121
SBF5258HF E3	5Ft 1.5m 2 x 58WT8	4123
SBF6270HF E3	6Ft 1.8m 2 x 70WT8	4125

SECTORPACK II SINGLE SWITCH START BATTENS

Part No.	Description	Code
Switch Start		
SBF2118	2Ft 0.6m 1 x 18W	1443
SBF4136	4Ft 1.2m 1 x 36W	4044
SBF5158	5Ft 1.5m 1 x 58W	4045
SBF6170	6Ft 1.8m 1 x 70W	4046
SBF81100	8Ft 2.4m 1 x 100W	4047
Switch Start Emergency - Maintained		
SBF4136 E3	4Ft 1.2m 1 x 36W	4094
SBF5158 E3	5Ft 1.5m 1 x 58W	4096
SBF6170 E3	6Ft 1.8m 1 x 70W	4098

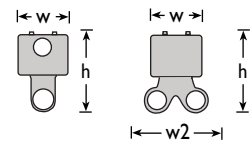
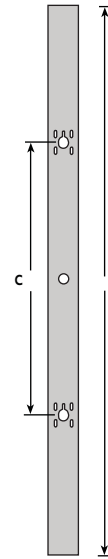
SECTORPACK II TWIN SWITCH START BATTENS

Part No.	Description	Code
Switch Start		
SBF2218	2Ft 0.6m 2 x 18W	4048
SBF4236	4Ft 1.2m 2 x 36W	4049
SBF5258	5Ft 1.5m 2 x 58W	4050
SBF6270	6Ft 1.8m 2 x 70W	4051
SBF82100	8Ft 2.4m 2 x 100W	4052
Switch Start Emergency - Maintained		
SBF4236 E3	4Ft 1.2m 2 x 36W	4110
SBF5258 E3	5Ft 1.5m 2 x 58W	4102
SBF6270 E3	6Ft 1.8m 2 x 70W	4104



SPECIFICATION

- Integral High Frequency control gear provides instant start with longer lamp life and energy savings of up to 20%
- Also High Energy and Efficiency T5 lamp options
- Flicker free operation independent of mains voltage fluctuations also provides reliable operation and long service life
- Triphosphor colour 840 Fluorescent tubes included in HF battens and halophosphate white included in switch start battens
- Integral emergency versions are 3 hour maintained



DIMENSION TABLE (mm):

Single	L	W	C	H
2ft	627	58	525	92
4ft	1238	58	605	92
5ft	1538	58	605	92
6ft	1802	58	605	92

Twin	L	W	C	H	W2
2ft	627	58	525	92	89
4ft	1238	58	605	92	89
5ft	1538	58	605	92	89
6ft	1802	58	605	92	89



IP20

T8 BATTEN ACCESSORIES

A comprehensive range of High Frequency Fluorescent Battens and Accessories for the T8 single and twin battens to ensure the light from the tube is effective in applications from domestic to high warehouse ceilings.

SPECIFICATION

- A clear styrene prismatic controller with fast fit plastic end caps that attach to batten, both T8 and T5 versions.
- Prismatic controllers disguise the lamps while maintaining an efficient and general light distribution.



SPECIFICATION

- An opal styrene diffuser with fast fit plastic end caps that attach to the batten both T8 and T5 versions
- Opal diffusers disguise the lamps to a greater extent than prismatic. Lower glare is therefore more suitable for domestic and public area use as well as a softer light when combined with other sources



SPECIFICATION

- Suitable for single and twin T8 Sectorpack Battens
- Steel reflectors that attach to the gear tray cover behind the lamp providing a wide distribution of light ideal for storage and factory areas
- White steel wire cages to be mounted on a standard reflector using 2 supplied zintec brackets
- Provides physical protection to tube ideal in areas such as sports halls and factories
- Angled reflectors enable specific wall or task lighting



SPECIFICATION

- High rack quality polished aluminium reflector projects a narrow beam of concentrated light enabling the batten to be mounted at greater more effective ceiling heights
- Designed specifically for racking aisles
- Suitable for single and twin T8 SectorPack Battens



SECTOR

PRIMATIC CONTROLLERS

Part No.	Description	Code
Single 77mm Wide		
SBF21 PC	2Ft 0.6m Prismatic	4021
SBF41 PC	4Ft 1.2m Prismatic	4022
SBF51 PC	5Ft 1.5m Prismatic	4023
SBF61 PC	6Ft 1.8m Prismatic	4024
SBF81 PC	8Ft 2.4m Prismatic	4025
Twin 160mm Wide		
SBF22 PC	2Ft 0.6m Prismatic	4036
SBF42 PC	4Ft 1.2m Prismatic	4037
SBF52 PC	5Ft 1.5m Prismatic	4038
SBF62 PC	6Ft 1.8m Prismatic	4039
SBF82 PC	8Ft 2.4m Prismatic	4040

OPAL DIFFUSERS

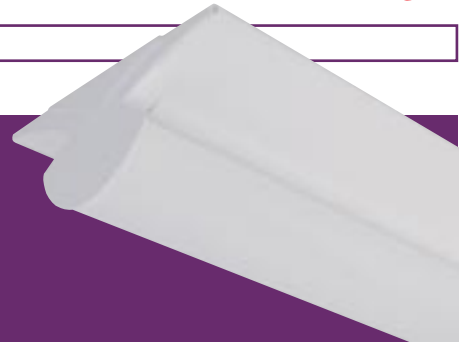
Part No.	Description	Code
Single 77mm Wide		
SBF51 OD	5Ft 1.5m Opal	4023
SBF61 OD	6Ft 1.8m Opal	4024
Twin 160mm Wide		
SBF52 OD	5Ft 1.5m Opal	4038
SBF62 OD	6Ft 1.8m Opal	4039

STEEL REFLECTORS AND WIRE GUARDS

Part No.	Description	Code
Single & Twin Reflector 195mm Wide		
SBF4 RF	4Ft 1.2m Single & Twin	4064
SBF5 RF	5Ft 1.5m Single & Twin	4065
SBF6 RF	6Ft 1.8m Single & Twin	4066
SBF8 RF	8Ft 2.4m Single & Twin	4067
Wire Guards (Require Steel Reflector)		
SBF5 WG	5Ft 1.5m Single & Twin	5055
SBF6 WG	6Ft 1.8m Single & Twin	5056
White Angled Reflectors		
SBF5 ARF	5Ft 1.5m Single & Twin	5065
SBF6 ARF	6Ft 1.8m Single & Twin	5066

HIGH RACK REFLECTOR

Part No.	Description	Code
SBF51 HRF	5Ft 1.5m Single	5075
SBF61 HRF	6Ft 1.8m Single	5076
SBF52 HRF	5Ft 1.5m Twin	5075
SBF62 HRF	6Ft 1.8m Twin	5076



FOCUS SURFACE LINEAR T5

An attractive surface mounted indirect luminaire that is a stylish alternative to the conventional louvred type surface linear. Offers subtle indirect light that can create a pleasing ambient effect on most ceilings.



IP20

FOCUS 7 SURFACE LINEAR T5

Part No.	Description	Code
Single Lamp High Efficiency		
FOCT57LIN128	4ft 1x28w T5 HE	4794
FOCT57LIN135	5ft 1x35w T5 HE	4795
Single Lamp High Output		
FOCT57LIN154	4ft 1x54w T5 HO	4794
FOCT57LIN149	5ft 1x49w T5 HO	4795
FOCT57LIN180	5ft 1x80w T5 HO	4795
Twin Lamp High Efficiency		
FOCT57LIN228	4ft 2x28w T5 HE	4794
FOCT57LIN235	5ft 2x35w T5 HE	4795
Twin Lamp High Output		
FOCT57LIN254	4ft 2x54w T5 HO	4794
FOCT57LIN249	5ft 2x49w T5 HO	4795
FOCT57LIN280	5ft 2x80w T5 HO	4795



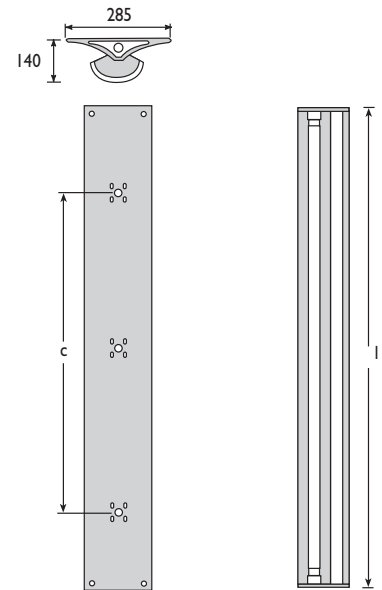
SPECIFICATION

- Includes colour 840 tubes
- All white steel body construction including end caps and perforated basket. Reflector is formed from white polyester pre-coated aluminum
- The perforated drop basket and white reflector produces a mellow calming lighting effect
- A combination of BESA entries and fixing points allows this luminaire to be mounted on most ceilings
- Focus 8 features additional Cat 2 specular central louvre for direct/indirect lighting

FOCUS 8 SURFACE LINEAR T5

Part No.	Description	Code
Single Lamp High Efficiency		
FOCT58LIN128	4ft 1x28w T5 HE	4794
FOCT58LIN135	5ft 1x35w T5 HE	4795
Single Lamp High Output		
FOCT58LIN154	4ft 1x54w T5 HO	4794
FOCT58LIN149	5ft 1x49w T5 HO	4795
FOCT58LIN180	5ft 1x80w T5 HO	4795
Twin Lamp High Efficiency		
FOCT58LIN228	4ft 2x28w T5 HE	4794
FOCT58LIN235	5ft 2x35w T5 HE	4795
Twin Lamp High Output		
FOCT58LIN254	4ft 2x54w T5 HO	4794
FOCT58LIN249	5ft 2x49w T5 HO	4795
FOCT58LIN280	5ft 2x80w T5 HO	4795

- Suffix
- HFR = High Frequency Dimming (Analogue 1-10V)
 - SD = Switch Dim
 - DDC = Digital Dimming Control
 - E3 = Integral 3 hour maintained emergency



DIMENSION TABLE (mm):

	l	c BESA
4ft T5	1185	600
5ft T5	1485	600



IDEAL FOR

- Offices, store rooms
- Production facilities
- Factories, industrial units
- Conference/board rooms
- Sport and leisure areas, indoor sports areas
- Schools & Corridors
- Receptions
- Retail

■ Focus Recessed Mods see page 78



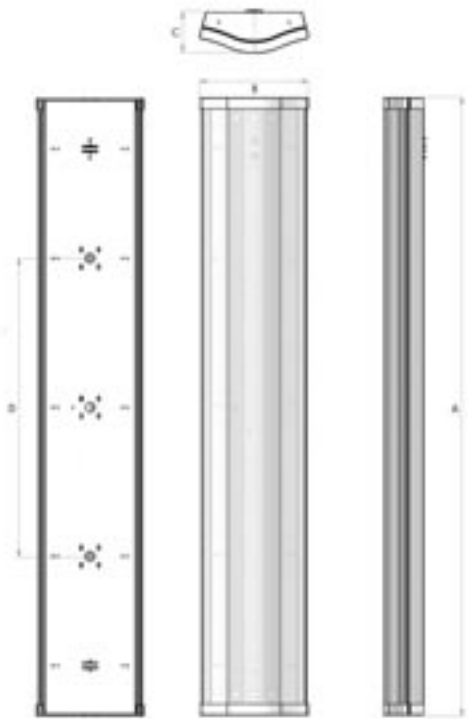
IP20

ACADEMY II T5 & T8

The new improved Academy II, has many shared features with its popular predecessor plus a stunning new curved profile, complete with prismatic/reeded polycarbonate diffuser with fully retained matching end caps. Its low profile sectional design allows for installation with minimal impact on its environment.

SPECIFICATION

- T8 version requires tubes
T5 version includes colour 840 tubes
- A surface commercial fitting, suitable for BESA box, suspension or direct fix mounting
- Secured and fully enclosed, therefore ideal for use in areas such as offices, corridors, toilets, stores, classrooms, lecture halls etc.
- Retained Prismatic Diffusers with screwed plastic end caps and Removable Gear tray
- Luminaire and controller supplied together



DIMENSION TABLE (mm):

	A	B	C	D
4ft	1240	215	82	600
5ft	1540	215	82	1200/600
6ft	1810	215	82	1200/600

ACADEMY II T5

Part No.	Description	Code
Single Lamp TP(a) Diffuser as standard High Efficiency		
ACDT5128HETPA	4ft 1X28W T5 HE	5094
ACDT5135HETPA	5ft 1X35W T5 HE	5095
High Output		
ACDT5149HOTPA	5ft 1X49W T5 HO	5095
Twin Lamp TP(a) Diffuser as standard High Efficiency		
ACDT5228HETPA	4ft 2X28W T5 HE	5104
ACDT5235HETPA	5ft 2X35W T5 HE	5105
High Output		
ACDT5249HOTPA	5ft 2X49W T5 HO	5105

Suffix
HFR = High Frequency Dimming (Analogue 1-10V)
SD(E) = Switch Dim
DDC = Digital Dimming Control
E3 = Integral 3 hour emergency

ACADEMY II T8

Part No.	Description	Code
Single Lamp TP(a) Fire Rated Diffuser		
ACD136HFTPA	4ft 1X36W T8	5094
ACD158HFTPA	5ft 1X58W T8	5095
ACD170HFTPA	6ft 1X70W T8	5096
Twin Lamp TP(a) Fire Rated Diffuser		
ACD236HFTPA	4ft 2X36W T8	5104
ACD258HFTPA	5ft 2X58W T8	5105
ACD270HFTPA	6ft 2X70W T8	5106

Luminaire and Controller Supplied Together

Suffix
HFR = High Frequency Dimming (Analogue 1-10V)
DDC = Digital Dimming Control
SD(E) = Switch Dim
E3 = Integral 3 hour emergency
NITE = Night light facility

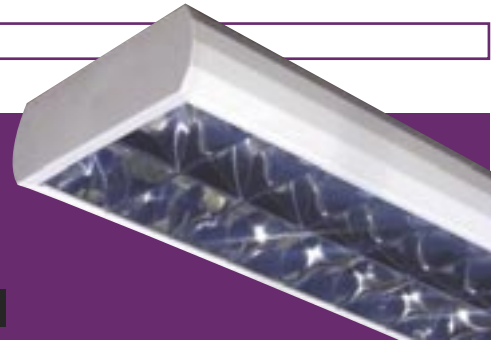
- Economy ACU version available.
Supplied without a removable gear tray and fused terminal block

LAMP GUIDE

See pages 143-145 for a comprehensive lamp guide



LOUVRED LUMINAIRES



SLEEK T8

A versatile surface mounted linear luminaire, with attractive low profile body, white plastic end caps and many louver and lamp options.



IP20

SLEEK SWITCH START WITH CAT 2 LOUVRE

Part No.	Description	Code
Single Lamp		
FMSLK621C2	600 2ft 1X18W	4708
FMSLK1221C2	1200 4ft 1X36W	4700
FMSLK1521C2	1500 5ft 1X58W	4702
FMSLK1821C2	1800 6ft 1X70W	4704
Single Lamp with Integral Emergency		
FMSLK1221E3C2	1200 4ft 1X36W	4710
FMSLK1521E3C2	1500 5ft 1X58W	4712
FMSLK1821E3C2	1800 6ft 1X70W	4714
Twin Lamp		
FMSLK622C2	600 2ft 2X18W	4709
FMSLK1222C2	1200 4ft 2X36W	4701
FMSLK1522C2	1500 5ft 2X58W	4703
FMSLK1822C2	1800 6ft 2X70W	4705
Twin Lamp with Integral Emergency		
FMSLK1222E3C2	1200 4ft 2X36W	4711
FMSLK1522E3C2	1500 5ft 2X58W	4713
FMSLK1822E3C2	1800 6ft 2X70W	4715

Suffix
 Control Gear Options
 HF = High Frequency Electronic
 HFR = High Frequency Dimming (Analogue 1-10V)
 DDC = Digital Dimming Control
 SD = Switch Dim
 E3 = Integral 3 hour emergency (not 2ft)
 Controller Options
 C2 = Cat 2 louver as standard
 SL = Standard low brightness louver
 PD = TP(b) Prismatic Diffuser (not emergency)
 TPA = TP(a) Fire Rated Diffuser

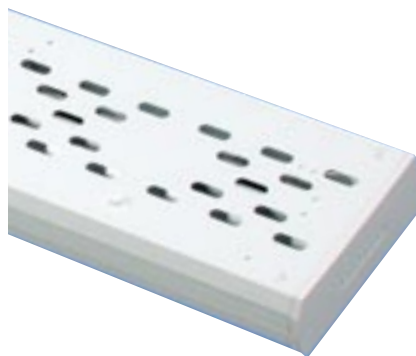
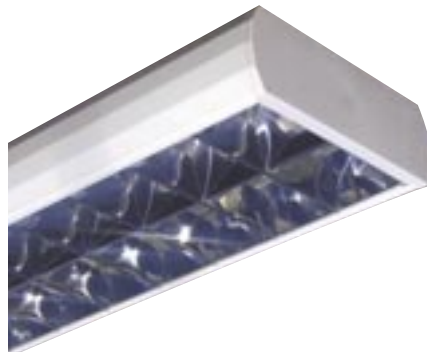
INDIRECT SLEEK (backlight/uplight) WITH CAT 2 LOUVRE

Part No.	Description	Code
Single Lamp		
FMSLKID1521HFC2	1500 5ft 1X58W HF	4702
FMSLKID1821HFC2	1800 6ft 1X70W HF	4704
Twin Lamp		
FMSLKID1522HFC2	1500 5ft 2X58W HF	4703
FMSLKID1822HFC2	1800 6ft 2X70W HF	4705

Full range of sizes, gear and louvres also available

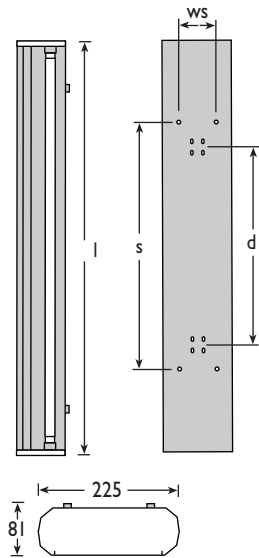
WIRE SUSPENSION KIT

Part No.	Description	Code
FMSUST8/KIT4	T8 4x3m Adjustable Wire Suspension	4740



SPECIFICATION

- Requires T8 fluorescent tubes
- Profiled white steel body style complemented with durable plastic end-caps
- A comprehensive range of 'lift and tilt' controllers include CIBSE LG3(2001) C2 65° louvres, standard low brightness louvres and prismatic panels in TP(b) & TP(a)
- Body profile allows for continuous run mounting
- A combination of BESA entries and suspension points allows this luminaire to be mounted on or from most ceilings with the wire suspension kit accessory



DIMENSION TABLE (mm):

	l	d	s	ws
		BESA	Susp	Susp
2ft T8	666	300	300	120
4ft T8	1276	600	750	120
5ft T8	1576	600	900	120
6ft T8	1840	600	900	120

IDEAL FOR

- Offices, store rooms
- Conference/board rooms
- Sport and leisure areas, indoor sports areas
- Schools
- Corridors
- Retail

■ Duo recessed modulares see page 70



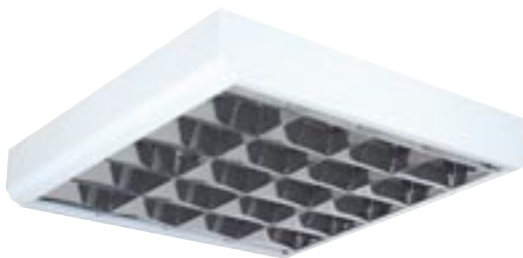
IP20

PREMIER SLEEK T5 & T8

A versatile surface mounted linear and modular luminaire, with attractive low profile body and many different sizes. The Premier SLEEK T5 has the benefit of using the new T5 lamp and control gear technology for more powerful and efficient luminaires

SPECIFICATION

- T8 versions require lamps
- T5 versions include colour 840 tubes
- A comprehensive range of controllers include CIBSE LG3(2001) C2 65° louvres, low brightness and prismatic panels
- Compatible with all generally used control gear and emergency options
- T8 version has a full steel body, white polyester coated
- T5 louvres are retained with shoot bolts
- Lift & tilt louvre within fitting body



PREMIER SLEEK T8 SURFACE

Part No.	Description	Width	Code
600x600			
FMPRSLK663HF*	3x18W	600mm	4726
FMPRSLK664HF*	4x18W	600mm	4726
1200x600			
FMPRSLK1263HF*	3x36W	600mm	4727
FMPRSLK1264HF*	4x36W	600mm	4727

* Control Gear and Louvre options are Required

PREMIER SLEEK T5 SURFACE

Part No.	Description	Width	Code
600 (2ft)			
FMSLKT5314*	3x14W T5 HE	440mm	4726
FMSLKT5414*	4x14W T5 HE	440mm	4726

* Control Gear and Louvre options are Required

PREMIER SLEEK T5 SURFACE AND SUSPENDED

Part No.	Description	Width	Code
1200 (4ft)			
FMSLKT5128*	1x28W T5 HE	190mm	4720
FMSLKT5154*	1x54W T5 HO	190mm	4720
FMSLKT5228TB*	2x28W T5 HE	275mm	4721
FMSLKT5254TB*	2x54W T5 HO	275mm	4721
1500 (5ft)			
FMSLKT5135*	1x35W T5 HE	190mm	4722
FMSLKT5149*	1x49W T5 HO	190mm	4722
FMSLKT5180*	1x80W T5 HO	190mm	4722
FMSLKT5235TB*	2x35W T5 HE	275mm	4723
FMSLKT5249TB*	2x49W T5 HO	275mm	4723
FMSLKT5280TB*	2x80W T5 HO	275mm	4723

* Control Gear and Louvre options are Required

PREMIER SLEEK T5 SUSPENDED

Part No.	Description	Width	Code
1200 (4ft)			
FMSLKT5228*	2x28W T5 HE	190mm	4721
FMSLKT5254*	2x54W T5 HO	190mm	4721
1500 (5ft)			
FMSLKT5235*	2x35W T5 HE	190mm	4723
FMSLKT5249*	2x49W T5 HO	190mm	4723
FMSLKT5280*	2x80W T5 HO	190mm	4723

* Control Gear and Louvre options are Required

PREMIER SLEEK SUSPENSION ACCESSORIES

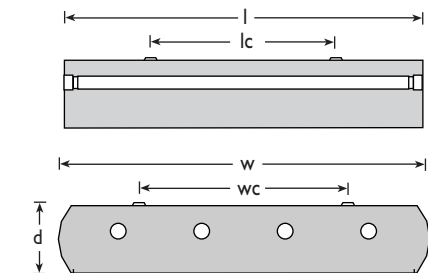
Part No.	Description
FMSUST5/KIT2	2x3M Wire Suspension for 190mm body
FMSUST5/KIT4	4x3M Wire Suspension for 275mm body

Suffix:

- Control Gear Options
- E3 = Integral 3 hour Maintained Emergency
- HFR = 1-10V HF Analogue Dimmable
- SD = Switch Dim
- DSI = Digital Dimming

Light Controller Options

- C2 = Cat 2 Louvre
- SL = Standard Louvre
- TPA = TP(a) Fire rated Diffuser
- ID = Indirect Backlight/Uplight via slots in rear of fitting



DIMENSION TABLE (mm):

	l	c	ls	ws	d
T8					
600x600	622	500	658	400	107
1200x600	1232	1000	658	400	107
T5					
600x440	588	300	440	339	68
1200x190	1188	600	190	87	68
1200x275	1188	600	275	171	68
1500x190	1488	1200	190	87	68
1500x275	1488	1200	275	171	68



LAMP GUIDE

See pages 143-145 for a comprehensive lamp guide



CONTINUOUS RUN LUMINAIRES

LITERUN 5 T5 MODULES

The slim and stylish LiteRun 5 Link Modules and accessories neatly integrate to create exciting and imaginative surface or suspended horizontal lighting systems. The system exudes engineering excellence with extruded aluminium profiles and die cast end caps. The system utilises reliable, long life T5 lamps.



IP20



LITERUN 5 LOUVRE MODULES

Part No.	Description	Code
Drop Suspension		
LR5LD135	35W T5 HE	4722
LR5LD149	49W T5 HO	4722
LR5LD180	80W T5 HO	4722
Drop Suspension Indirect		
LR5LD135ID	35W T5 HE	4722
LR5LD149ID	49W T5 HO	4722
LR5LD180ID	80W T5 HO	4722
Surface Mount		
LR5LS135	35W T5 HE	4722
LR5LS149	49W T5 HO	4722
LR5LS180	80W T5 HO	4722
Surface Mount Indirect		
LR5LS135ID	35W T5 HE	4722
LR5LS149ID	49W T5 HO	4722
LR5LS180ID	80W T5 HO	4722

SPECIFICATION

- The 5ft Louvre Module utilises a high performance parabolic matted louvre with an LOR of 0.71 and is LG7 compatible at 70:50:20 reflectances (35/49W only).
- Both modules include a prewired 16A seven wire harness with push fit terminals.
- Each Module is supplied with twin 2m suspension wires for accurate alignment
- Requires 5ft (1449mm) T5 fluorescent tubes High Efficiency or High Output

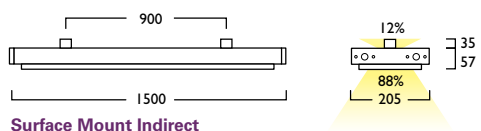
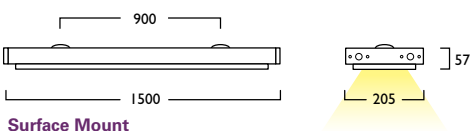
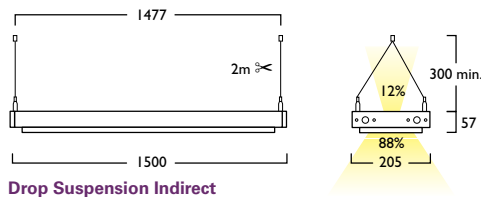
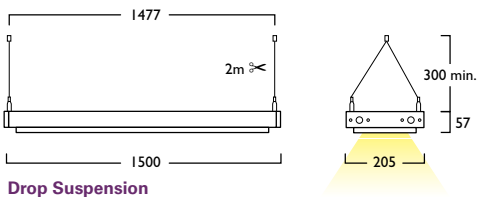
LITERUN 5 ETCHED GLASS MODULES

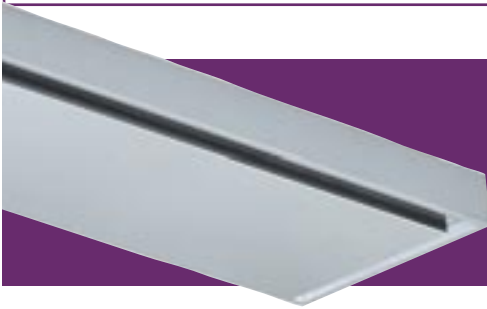
Part No.	Description	Code
Drop Suspension		
LR5ED135	35W T5 HE	4728
LR5ED149	49W T5 HO	4728
LR5ED180	80W T5 HO	4728
Drop Suspension Indirect		
LR5ED135ID	35W T5 HE	4728
LR5ED149ID	49W T5 HO	4728
LR5ED180ID	80W T5 HO	4728
Surface Mount		
LR5ES135	35W T5 HE	4728
LR5ES149	49W T5 HO	4728
LR5ES180	80W T5 HO	4728
Surface Mount Indirect		
LR5ES135ID	35W T5 HE	4728
LR5ES149ID	49W T5 HO	4728
LR5ES180ID	80W T5 HO	4728

SPECIFICATION

- The 5ft Etched Module has a softly diffused, tempered glass fascia to create a clean and contemporary appearance with an excellent level of ambient illumination.
- Both modules include a prewired 16A seven wire harness with push fit terminals.
- Each Module is supplied with twin 2m suspension wires for accurate alignment
- Requires 5ft (1449mm) T5 fluorescent tubes High Efficiency or High Output

White standard
 Suffix: BLK = Black, ALU = Aluminium
 /E3 = 3 hour maintained integral emergency
 /HFR = 1-10V Dimming
 /DDC = Digital Dimming Control





LITERUN 5 ACCESSORIES

The slim and stylish LiteRun 5 Link Modules and accessories neatly integrate to create exciting and imaginative surface or suspended horizontal lighting systems. The system exudes engineering excellence with extruded aluminium profiles and die cast end caps. The system utilises reliable, long life T5 lamps.



LITERUN 5 SPACER LINK MODULES

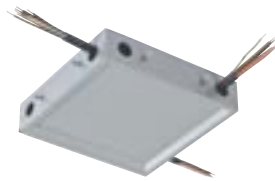
Part No.	Description	Code
Drop Suspension Spacer		
LR5D205	205 x 205mm	4738
LR5D750	205 x 750mm	4738
LR5D1500	205 x 1500mm	4738
Drop Suspension Indirect Spacer		
LR5D205ID	205 x 205mm	4738
LR5D750ID	205 x 750mm	4738
LR5D1500ID	205 x 1500mm	4738
Surface Mount Spacer		
LR5S205	205 x 205mm	4738
LR5S750	205 x 750mm	4738
LR5S1500	205 x 1500mm	4738
Surface Mount Indirect Spacer		
LR5S205ID	205 x 205mm	4738
LR5S750ID	205 x 750mm	4738
LR5S1500ID	205 x 1500mm	4738

White standard

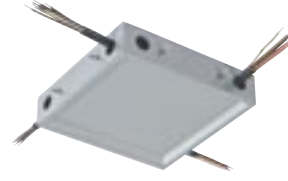
Suffix: BLK = Black, ALU = Aluminium



L Connector



T Connector



X Connector



Module End Cap

(Also used for solo mounting)



CONNECTORS AND LINK MODULES

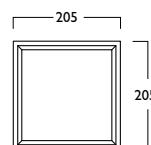
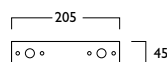
Part No.	Description	Code
Connectors		
LR5CON2L	L Connector	4738
LR5CON3T	T Connector	4738
LR5CON4X	X Connector	4738
LR5CON1E	Module End Cap	4738

White standard

Suffix: BLK = Black, ALU = Aluminium

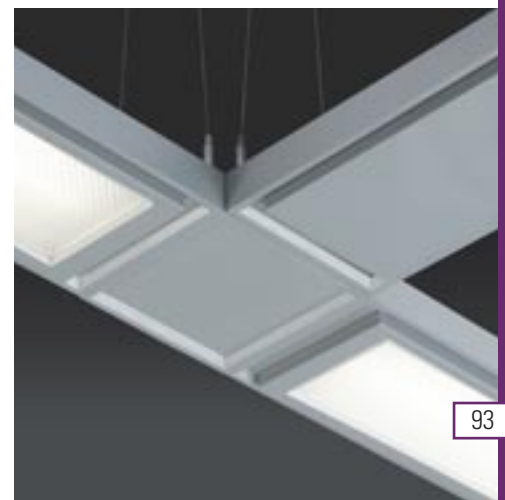
SPECIFICATION

- The Spacer Module and Connector design compliments the other modules in the range and promotes the slim identity of the LiteRun 5 Link system
- Connectors and Spacer Modules include a prewired 16A seven wire harness with push fit terminals
- Spacer Modules for Indirect versions do not produce any upward illumination
- Drop suspension modules are supplied with 2x2m catenary suspension wires
- 5m extension kits available



IDEAL FOR

- Retail
- Airports
- Conference Rooms
- Supermarkets
- Libraries
- Educational





ISO SURFACE LINEAR & WALL

A comprehensive range of T5 direct/indirect luminaires designed to aid LG3 2001/LG7 compliance. Providing contemporary design for specifications where style is of equal importance as technical performance.



IP20

ISO SURFACE LINEAR T5

Part No.	Description	Code
1200mm (4ft) Specular Cat 2 Louvre		
ISOS228C2	2x28W T5 HE	4794
ISOS254C2	2x54W T5 HO	4794
1200mm (4ft) Semi Specular Cat 2 Louvre		
ISOS228SSC2	2x28W T5 HE	4794
ISOS254SSC2	2x54W T5 HO	4794
1500mm (5ft) Specular Cat 2 Louvre		
ISOS235C2	2x35W T5 HE	4795
ISOS249C2	2x49W T5 HO	4795
1500mm (5ft) Semi Specular Cat 2 Louvre		
ISOS235SSC2	2x35W T5 HE	4795
ISOS249SSC2	2x49W T5 HO	4795

Suffix:
 ID = Suspended Indirect version
 E3 = 3 Hour integral Emergency
 HFR = 1-10V Analogue Dimmable
 SD = Switch Dim
 DSI = Digital Dimming



SPECIFICATION

- The ISO Surface Linear can be mounted directly to the ceiling or suspended as an Indirect version with bi-directional slots in rear using an optional 4 point catenary suspension kit
- The ISO Surface can then be used for compliance with LG3, LG7 and BS EN 12464
- Supplied with High Efficiency or High Output T5 Colour 840 lamps
- High quality powder coated steel body and perforated side baskets
- A choice of 2 central louvres retained with shoot bolts for easy lamp change. Specular or semi specular category 2 with less glare

ISO SURFACE LINEAR ACCESSORIES

Part No.	Description	Code
FMSUST5/KIT4	4x3 Wire Suspension	4740

ISO WALL MIDI

Part No.	Description	Code
Compact Fluorescent		
ISOW226	2x26W TCDE	8500
ISOW124	1x24W TCL	8500

ISO WALL MAXI

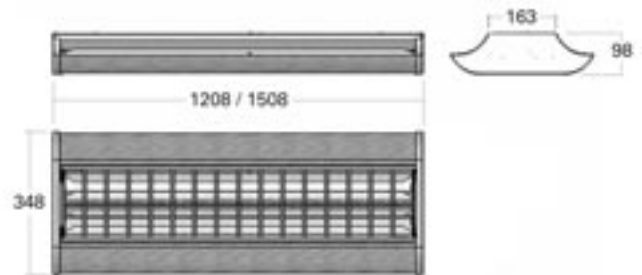
Part No.	Description	Code
Compact Fluorescent		
ISOW140	1x40W TCL	8500
ISOW155	1x55W TCL	8500
ISOW180	1x80w TCL	8500
Linear T5		
ISOWT5224	2x24w T5 Ho	8500

Suffix
 E3 = LED Integral 3 hour Maintained (Maxi only)
 HFR = 1-10V Analogue Dimmable
 SD= Switch Dim
 DSI=Digital Dimming



SPECIFICATION

- Bi-directional uplighter providing balanced light distribution with maximum performance
- Supplied with Colour 84 lamps
- High Frequency gear as standard
- Perforated housing with polycarbonate end caps
- Co-ordinates with ISO Recessed on page 80 and 81 and ISO surface on page 94
- Choice of 350 or 650mm body sizes with LED emergency available in the Maxi only



ISO WALL ACCESSORIES

Part No.	Description
ISOWGC1	Glass Cover for Midi
ISOWGC2	Glass Cover for Maxi

