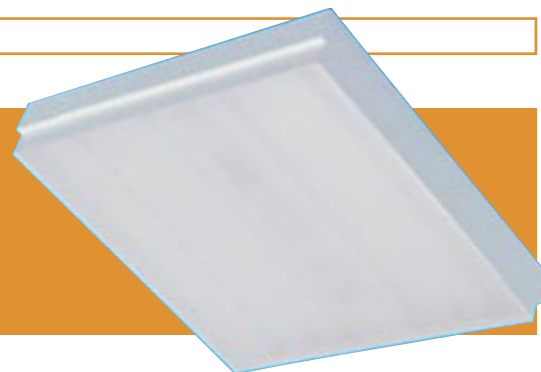


COMBINED LAYIN & CONTROLLERS



DUO T8

An innovative fully enclosed luminaire which suits both narrow and standard table ceiling grids without alteration. As the Louvre lifts and tilts in the fitting rather than the ceiling



IP20

DUO WITH CAT2 LOUVRE

Part No.	Description	Code
600x600		
FMDUO663C2	3x18W T8	4750
FMDUO664C2	4x18W T8	4750
1200x600		
FMDUO1263C2	3x36W T8	4760
FMDUO1264C2	4x36W T8	4760

See Suffix Table for other variants

DUO WITH STANDARD LOW BRIGHTNESS CAT2 LOUVRE

Part No.	Description	Code
600x600		
FMDUO663SL	3x18W T8	6750
FMDUO664SL	4x18W T8	6750
1200x600		
FMDUO1263SL	3x36W T8	6760
FMDUO1264SL	4x36W T8	6760

See Suffix Table for other variants

DUO WITH PRISMATIC PANEL

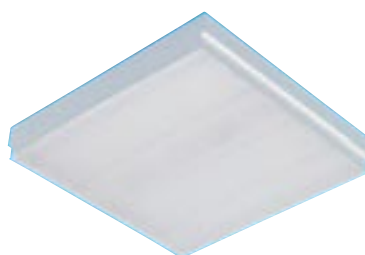
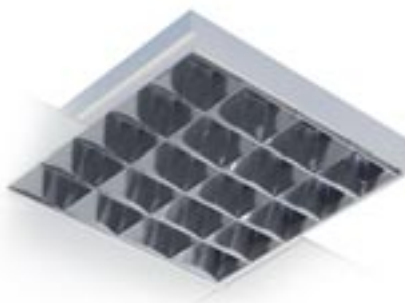
Part No.	Description	Code
600x600		
FMDUO663*	3x18W T8	7750
FMDUO664*	4x18W T8	7750
1200x600		
FMDUO1263*	3x36W T8	7760
FMDUO1264*	4x36W T8	7760

*PD = TP(b) Styrene Prismatic Panel (not emergency)

*TPA = TP(a) Fire rated Prismatic Panel

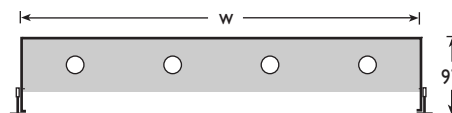
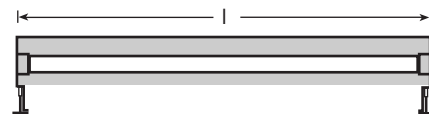
Suffix:

- HF = High Frequency Electronic
- HFR = Dimmable (Analogue 1-10V)
- SD = Switch Dim
- DDC = Digital Dimming Control
- AH = Air Handling (litres per second required)
- E3 = 3 Hour Maintained Emergency Pack (Integral)



SPECIFICATION

- Requires Lamps
- The luminaire sits inside the grid of both 15 and 25mm Exposed T-ceilings
- Competitively priced with fitting and louvre packed together
- Available with a range of 'lift and tilt' controllers including CIBSE LG3(2001) C2 65° louvres designed to comply with the latest requirements
- Compatible with all generally used control gear and emergency options
- 'Lifts and Tilts' in a 280mm void depth ceiling



DIMENSION TABLE (mm):

Dimensions	L	W	D
600x600	619	595	96
1200x600	1229	595	96



IDEAL FOR

- General Office Areas
- Corridors
- Conference Centres
- Lecture/Study Rooms & Libraries
- Reception & Circulation Areas
- Universities, Schools & Colleges
- Retail
- Call Centres

■ Recessed fire covers see page 44