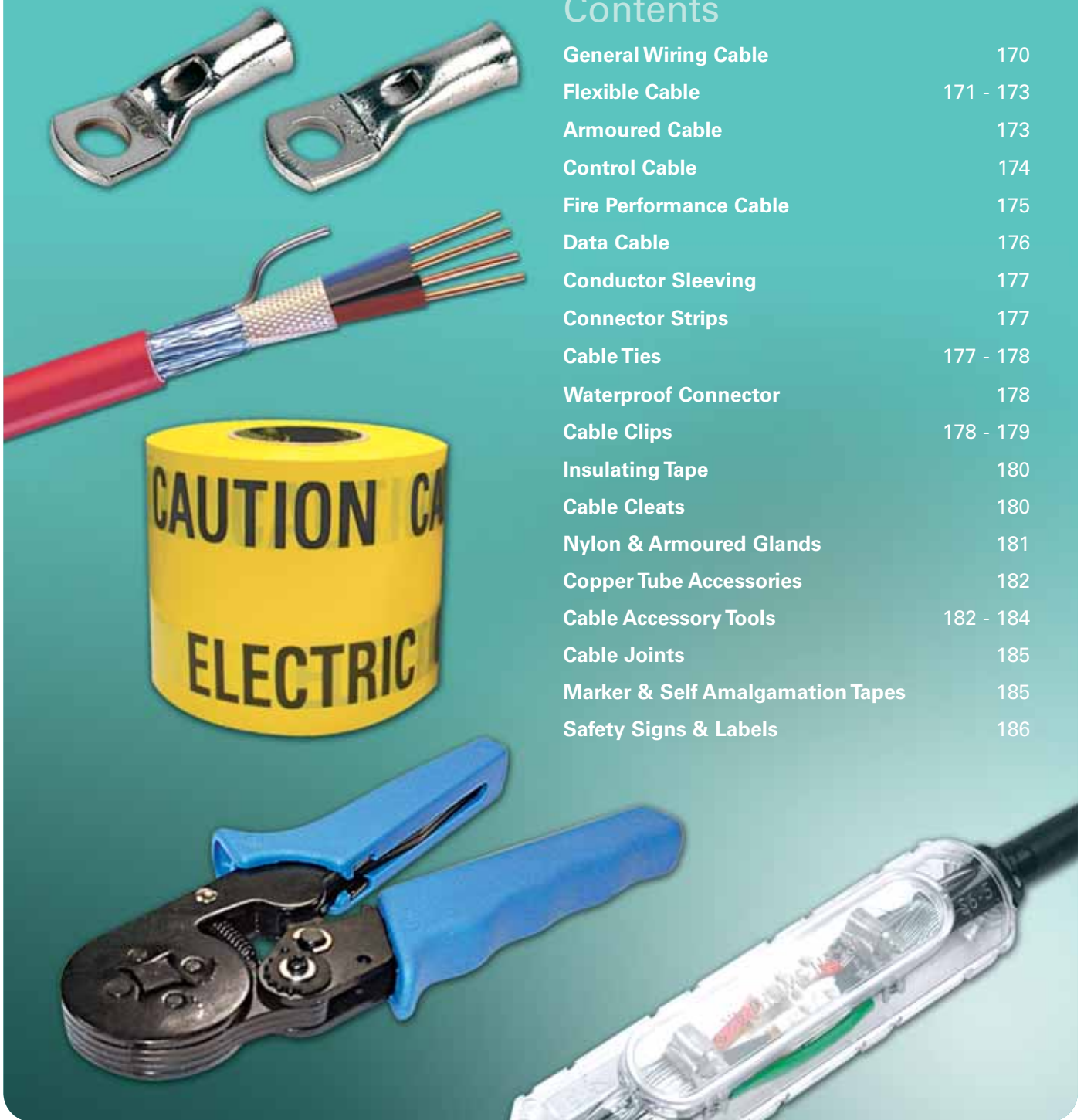


Cable & Cable Accessories

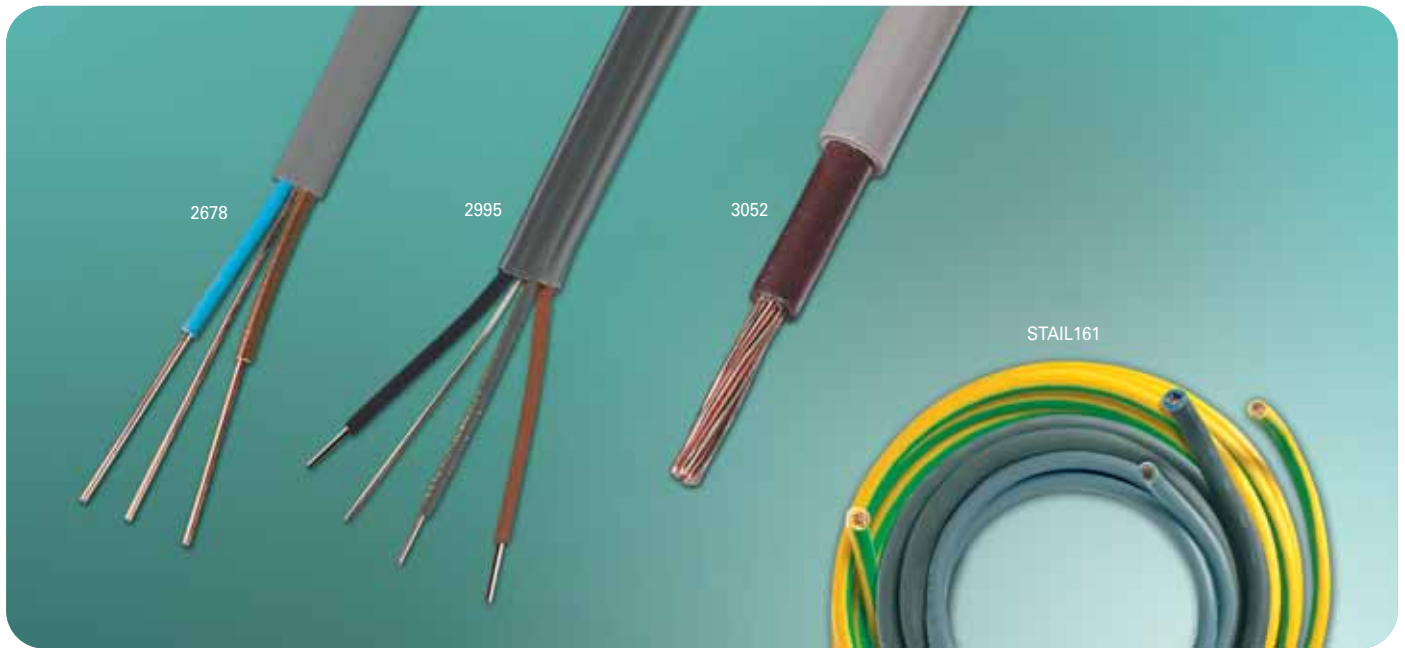
Contents

General Wiring Cable	170
Flexible Cable	171 - 173
Armoured Cable	173
Control Cable	174
Fire Performance Cable	175
Data Cable	176
Conductor Sleeving	177
Connector Strips	177
Cable Ties	177 - 178
Waterproof Connector	178
Cable Clips	178 - 179
Insulating Tape	180
Cable Cleats	180
Nylon & Armoured Glands	181
Copper Tube Accessories	182
Cable Accessory Tools	182 - 184
Cable Joints	185
Marker & Self Amalgamation Tapes	185
Safety Signs & Labels	186



Cable & Cable Accessories

GENERAL WIRING CABLE



GENERAL WIRING CABLE

Harmonised Flat Cables

BS6004 and BASEC certified.

Voltage rating 300 / 500V.

Size (mm)	Conductor Colours	Sheath Colour	Drum Length (m)	Order No.
6242YH Harmonised Flat Twin and Earth				
1	Brown / Blue	Grey	100	2678
1	Brown / Blue	Grey	50	2679
1.5	Brown / Blue	Grey	100	2682
1.5	Brown / Blue	Grey	50	2683
2.5	Brown / Blue	Grey	100	2686
2.5	Brown / Blue	Grey	50	2687
4	Brown / Blue	Grey	100	2698
4	Brown / Blue	Grey	50	2701
6	Brown / Blue	Grey	100	2721
6	Brown / Blue	Grey	50	2734
10	Brown / Blue	Grey	100	2785
10	Brown / Blue	Grey	50	2828
16	Brown / Blue	Grey	100	2872
16	Brown / Blue	Grey	50	2873

6242BH Harmonised Flat Twin and Earth (Low Smoke and Fume)

1	Brown / Blue	White	100	3440
1.5	Brown / Blue	White	100	3441
2.5	Brown / Blue	White	100	3442
4	Brown / Blue	White	100	3443
6	Brown / Blue	White	100	3444

6243YH Harmonised Flat 3 Core and Earth

1	Brown / Black / Grey	Grey	100	2995
1	Brown / Black / Grey	Grey	50	2996
1.5	Brown / Black / Grey	Grey	100	2999
1.5	Brown / Black / Grey	Grey	50	3004

6243BH Harmonised Flat 3 Core and Earth (Low Smoke and Fume)

1	Brown / Black / Grey	White	100	3447
1.5	Brown / Black / Grey	White	100	3448

6181YH - Harmonised Circular Single Core

BS6004 and BASEC certified.

Voltage rating 300 / 500V.

Size (mm)	Conductor Colours	Sheath Colour	Drum Length (m)	Order No.
10	Brown	Grey	100	3052
10	Blue	Grey	100	3052
10	Brown	Grey	50	3053
10	Blue	Grey	50	3053
16	Brown	Grey	100	3055
16	Blue	Grey	100	3055
16	Brown	Grey	50	3064
16	Blue	Grey	50	3064
25	Brown	Grey	100	3118
25	Blue	Grey	100	3118
25	Brown	Grey	50	3119
25	Blue	Grey	50	3119
35	Brown	Grey	100	3120
35	Blue	Grey	100	3120

SECTOR

Meter Tail Packs

BS6004 and BASEC certified.

Choice of 16mm² or 25mm² in three lengths.

Cable Sizes mm ²	Length	Ref No.	Order No. 0001
16	1	STAIL161	145948
16	3	STAIL163	145951
16	5	STAIL165	145965
25	1	STAIL251	145977
25	3	STAIL253	145980
25	5	STAIL255	145993

Cable & Cable Accessories

GENERAL WIRING & FLEXIBLE CABLE



Single Core Cable - Stranded

6491X - PVC Insulated:

BS6004, BASEC certified.

Voltage rating 1.5mm and above 450 / 750V.

6491B - Low Smoke and Fume:

BS7211, BASEC certified.

Voltage rating 450 / 750V.

Size (mm)	Sheath Colours	Drum Length (m)	Order No.
6491X - PVC Insulated			
1.5	Blue	100	3125
1.5	Brown	100	3126
1.5	Grey	100	5750
1.5	Green Yellow	100	3127
2.5	Blue	100	3134
2.5	Brown	100	3135
2.5	Grey	100	5751
2.5	Green Yellow	100	3136
4	Blue	100	2129
4	Brown	100	2130
4	Grey	100	5752
4	Green Yellow	100	2131
6	Blue	100	2143
6	Brown	100	2145
6	Grey	100	5753
6	Green Yellow	100	2150
10	Blue	100	2260
10	Brown	100	2264
10	Grey	100	5754
10	Green Yellow	100	2266
16	Blue	100	2278
16	Brown	100	2280
16	Grey	100	5755
16	Green Yellow	100	2282

6491B - Low Smoke and Fume

1.5	Blue	100	3381
1.5	Brown	100	3382
1.5	Grey	100	5770
1.5	Green Yellow	100	3383
2.5	Blue	100	3389
2.5	Brown	100	3390
2.5	Grey	100	5771
2.5	Green Yellow	100	3391
4	Blue	100	3397
4	Brown	100	5761
4	Grey	100	5772
4	Green Yellow	100	3398
6	Blue	100	3402
6	Brown	100	5762
6	Grey	100	5773
6	Green Yellow	100	3403
10	Blue	100	3407
10	Brown	100	5763
10	Grey	100	5774
10	Green Yellow	100	3408
16	Blue	100	3412
16	Brown	100	5764
16	Grey	100	5775
16	Green Yellow	100	3413

FLEXIBLE CABLE

2 / 3 Core Light Duty Cable, PVC Insulated

BS6500, BASEC certified. Voltage rating 300 / 500V.

Size (mm)	Conductor Colours	Sheath Colour	Drum Length (m)	Order No.
2182Y - 2 Core Circular Cable				
0.5	Brown / Blue	White	100	1108
0.5	Brown / Blue	White	50	1802
0.75	Brown / Blue	White	100	1154
0.75	Brown / Blue	White	50	1806

2183Y - 3 Core Circular Cable

0.5	Brown / Blue	White	100	1156
0.5	Brown / Blue	White	50	1809
0.75	Brown / Blue	White	100	1166
0.75	Brown / Blue	White	50	1812

* Earth conductor = Green / Yellow Sheath

3093Y - 3 Core Circular Cable, Heat Resistant, PVC Sheathed

BS6141 and BASEC certified.

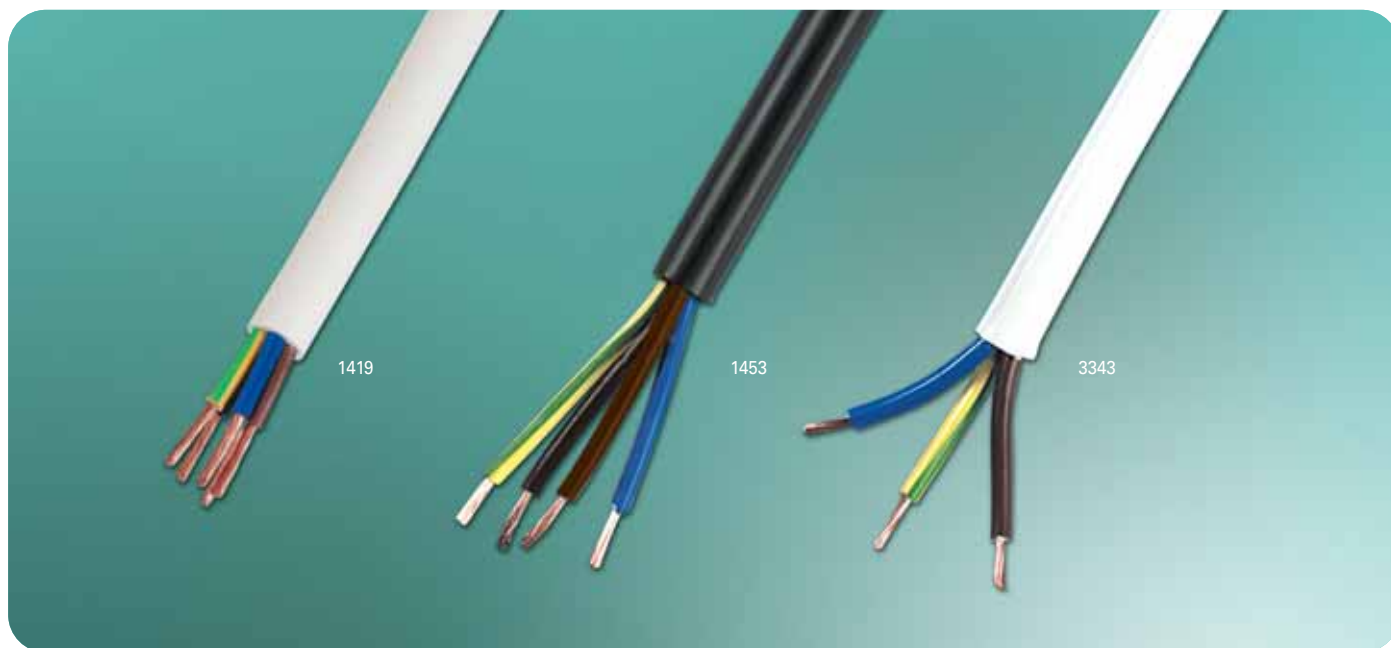
Voltage rating 300 / 500V.

Size (mm)	Conductor Colours	Sheath Colour	Drum Length (m)	Order No.
0.75	Brown / Blue	White	100	1230
0.75	Brown / Blue	White	50	1877
1	Brown / Blue	White	100	1231
1	Brown / Blue	White	50	1890
1.5	Brown / Blue	White	100	1238
1.5	Brown / Blue	White	50	1891
2.5	Brown / Blue	White	100	1241
2.5	Brown / Blue	White	50	1898

* Earth conductor = Green / Yellow Sheath

Cable & Cable Accessories

FLEXIBLE CABLE



2 / 3 Core Heavy Duty Cable, PVC Insulated

BS6500 and BASEC certified.

Voltage rating 300 / 500V.

Size (mm)	Conductor Colours	Sheath Colour	Drum Length (m)	Order No.
3182Y - 2 Core Circular Cable				
0.75	Brown / Blue	White	100	1293
0.75	Brown / Blue	White	50	1915
1	Brown / Blue	White	100	1351
1	Brown / Blue	White	50	1932
1.5	Brown / Blue	White	100	1410
1.5	Brown / Blue	White	50	1956

3183Y - 3 Core Circular Cable

0.75	Brown / Blue	Black	100	1419
0.75	Brown / Blue	Black	50	1964
0.75	Brown / Blue	White	100	1425
0.75	Brown / Blue	White	50	1968
1	Brown / Blue	Black	100	1426
1	Brown / Blue	Black	50	1969
1	Brown / Blue	White	100	1428
1	Brown / Blue	White	50	1976
1.5	Brown / Blue	Black	100	1429
1.5	Brown / Blue	Black	50	1981
1.5	Brown / Blue	White	100	1433
1.5	Brown / Blue	White	50	2019
2.5	Brown / Blue	Black	100	1435
2.5	Brown / Blue	Black	50	2022
2.5	Brown / Blue	White	100	1446
2.5	Brown / Blue	White	50	2025

* Earth conductor = Green / Yellow Sheath

3184Y - 4 Core Circular Cable, PVC Insulated

BS6500 and BASEC certified. Voltage rating 300 / 500V.

Size (mm)	Conductor Colours	Sheath Colour	Drum Length (m)	Order No.
0.75	Brown / Blue / Black	Black	100	1453
0.75	Brown / Blue / Black	Black	50	2039
0.75	Brown / Blue / Black	White	100	1455
0.75	Brown / Blue / Black	White	50	2040
1	Brown / Blue / Black	Black	100	1480
1	Brown / Blue / Black	Black	50	2041
1	Brown / Blue / Black	White	100	1482
1	Brown / Blue / Black	White	50	2043
1.5	Brown / Blue / Black	Black	100	1499
1.5	Brown / Blue / Black	Black	50	2044
1.5	Brown / Blue / Black	White	100	1508
1.5	Brown / Blue / Black	White	50	2045
2.5	Brown / Blue / Black	Black	100	1511
2.5	Brown / Blue / Black	Black	50	2053
2.5	Brown / Blue / Black	White	100	1513
2.5	Brown / Blue / Black	White	50	2054

* Earth conductor = Green / Yellow Sheath

3183TQ - 3 Core Circular Cable, Heat Resistant, EPR Insulated, HOFR Sheathed

BS6500 and BASEC certified.

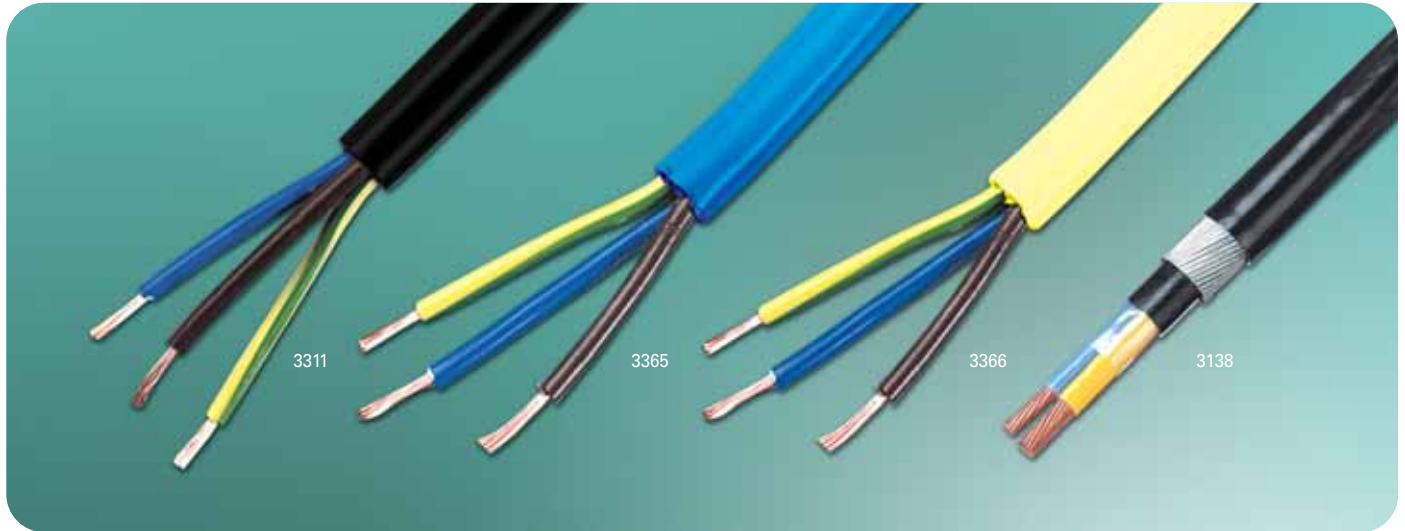
Voltage rating 300 / 500V.

Size (mm)	Conductor Colours	Sheath Colour	Drum Length (m)	Order No.
0.75	Brown / Blue	White	100	3343
0.75	Brown / Blue	White	50	3342
1	Brown / Blue	White	100	3345
1	Brown / Blue	White	50	3344
1.5	Brown / Blue	White	100	3347
1.5	Brown / Blue	White	50	3346
2.5	Brown / Blue	White	100	3349
2.5	Brown / Blue	White	50	3348

* Earth conductor = Green / Yellow Sheath

Cable & Cable Accessories

FLEXIBLE & ARMOURED CABLE



3183 - 3 Core Circular Cable, Rubber Sheathed

BS6500 and BASEC certified.

Voltage rating 300 / 500V.

Size (mm)	Conductor Colours	Sheath Colour	Drum Length (m)	Order No.
0.75	Brown / Blue	Black	100	3311
0.75	Brown / Blue	Black	50	3310
1	Brown / Blue	Black	100	3313
1	Brown / Blue	Black	50	3312
1.5	Brown / Blue	Black	100	3315
1.5	Brown / Blue	Black	50	3314
2.5	Brown / Blue	Black	100	3317
2.5	Brown / Blue	Black	50	3316

* Earth conductor = Green / Yellow Sheath

3183YAG - 3 Core Circular Cable, PVC Sheathed to -40°C

BS6500 and BASEC certified.

Voltage rating 300 / 500V.

Size (mm)	Conductor Colours	Sheath Colour	Drum Length (m)	Order No.
1.5	Brown / Blue	Yellow	100	3365
1.5	Brown / Blue	Blue	100	3365
2.5	Brown / Blue	Yellow	100	3366
2.5	Brown / Blue	Blue	100	3366

* Earth conductor = Green / Yellow Sheath

ARMOURED CABLE

2 / 3 / 4 Core, SWA Stranded, XLPE Insulated, PVC sheathed

BS5467 or BS6346 approved.

BASEC certified.

Voltage rating 600 / 1000V.

Size (mm)	Sheath Colours	Drum Length (m)	Order No.
6942XL7H - 2 Core Cable			
1.5	Black	100	3138
2.5	Black	100	3139
4	Black	100	3140
6	Black	100	3141
10	Black	100	3142
16	Black	100	3143
25	Black	100	3502
35	Black	100	3506

6943XL7H - 3 Core Cable

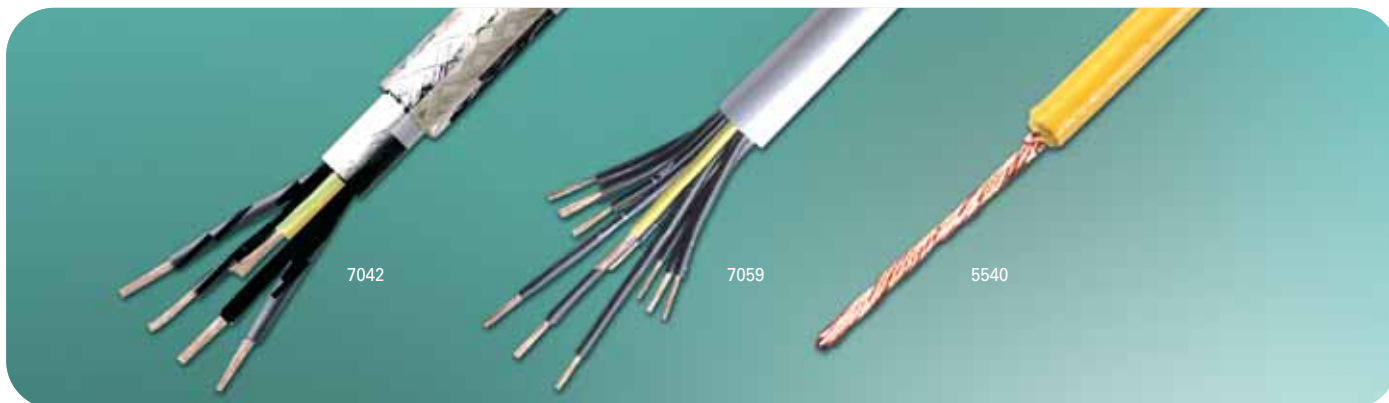
1.5	Black	100	3144
2.5	Black	100	3145
4	Black	100	3146
6	Black	100	3147
10	Black	100	3148
16	Black	100	3149
25	Black	100	3549
35	Black	100	3551

6944XL7H - 4 Core Cable

1.5	Black	100	3290
2.5	Black	100	3291
4	Black	100	3292
6	Black	100	3293
10	Black	100	3294
16	Black	100	3295
25	Black	100	3630
35	Black	100	3631

Cable & Cable Accessories

CONTROL CABLE



CONTROL CABLE

Flexible Control Cable

SY Type:

PVC insulated,
PVC bedding galvanised wire braid,
Transparent PVC sheath,
Numbered cores with Green / Yellow Earth core,
VDE 0293 / 0250.

YY Type:

PVC insulated,
Flexible stranded bare copper conductors,
Grey PVC sheath,
Numbered cores with Green / Yellow earth cores,
VDE 0250 / 0281.

No. of Cores	Size (mm)	Drum Length (m)	Order No.
SY Type			
2 Core	0.75	100	7030
2 Core	1	100	7031
2 Core	1.5	100	7032
3 Core	0.75	100	7034
3 Core	1	100	7035
3 Core	1.5	100	7036
4 Core	0.75	100	7040
4 Core	1	100	7041
4 Core	1.5	100	7042

YY Type

2 Core	1	100	7047
2 Core	1.5	100	7048
3 Core	0.75	100	7051
3 Core	1	100	7052
3 Core	1.5	100	7053
4 Core	0.75	100	7057
4 Core	1	100	7058
4 Core	1.5	100	7059

105°C Tri-Rated Switchgear and Control Panel Wire

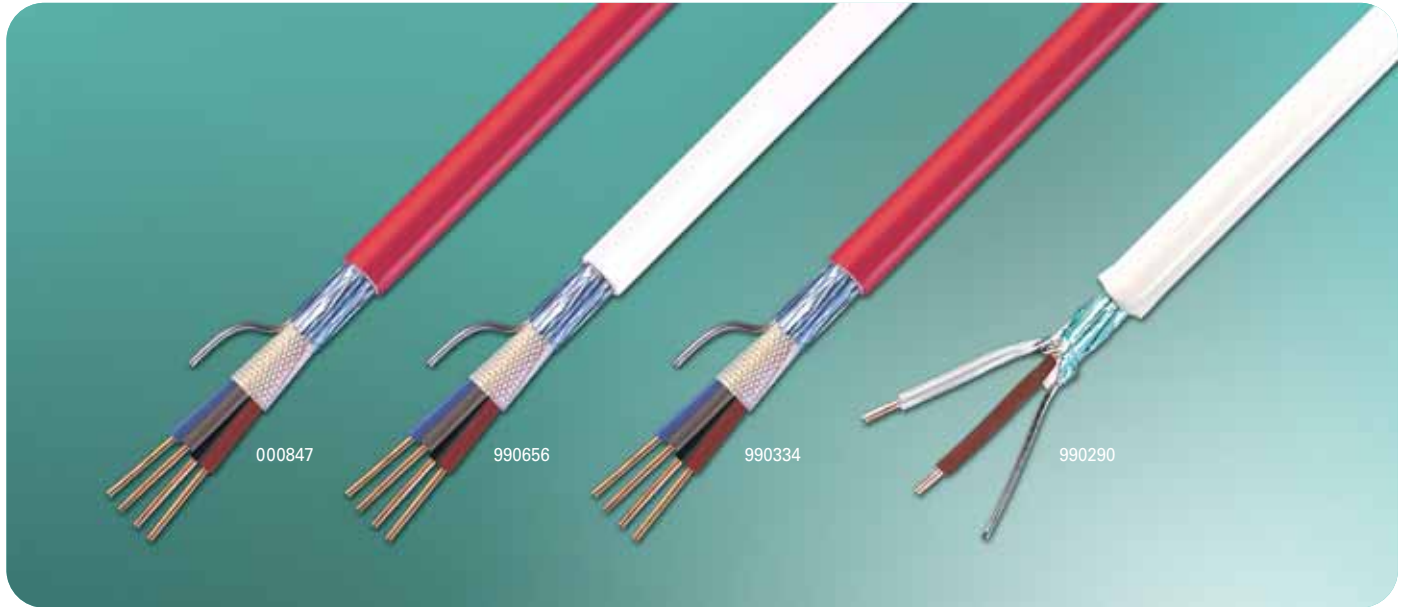
BS6231 certified. UL and CSA approved.

Voltage 600V.

Sheath Colours	Drum Length (m)	Order No.
0.5mm		
Black	100	5519
Blue	100	5530
Brown	100	5531
Green / Yellow	100	5532
Grey	100	5534
Red	100	5537
Violet	100	5538
White	100	5539
Yellow	100	5540
0.75mm		
Black	100	5541
Blue	100	5542
Brown	100	5543
Green / Yellow	100	5544
Grey	100	5546
Red	100	5549
Violet	100	5550
White	100	5551
Yellow	100	5552
1mm		
Black	100	5553
Blue	100	5554
Brown	100	5555
Green / Yellow	100	5556
Grey	100	5558
Red	100	5561
Violet	100	5562
White	100	5563
Yellow	100	5564
1.5mm		
Black	100	5565
Blue	100	5566
Brown	100	5567
Green / Yellow	100	5568
Grey	100	5570
Red	100	5573
Violet	100	5574
White	100	5575
Yellow	100	5576
2.5mm		
Black	100	5577
Blue	100	5578
Brown	100	5579
Green / Yellow	100	5580
Grey	100	5582
Red	100	5585
Violet	100	5586
White	100	5587
Yellow	100	5588

Cable & Cable Accessories

FIRE PERFORMANCE CABLE



FIRE PERFORMANCE CABLE



Draka Firetuf "Easystrip"

Zero Halogen, low Smoke cable ideal for emergency lighting, alarm and voice evacuation systems.

BASEC certified, BS5839-1:2002 approved.

No. of Cores	Size (mm)	Sheath Colours	Drum Length (m)	Order No. 3037
2 Core + CPC	1.5	Red	100	000724
2 Core + CPC	1.5	White	100	000737
2 Core + CPC	2.5	Red	100	000740
2 Core + CPC	2.5	White	100	000753
4 Core + CPC	1.5	Red	100	000847
4 Core + CPC	1.5	White	100	000850

* CPC = Bare Conductor.



Prysmian FP200H Gold - Multicore Fire Retardant Cable

Suitable for use with Fire Alarms and emergency lighting applications.

BASEC certified, BS6387 approved.

No. of Cores	Size (mm)	Sheath Colours	Drum Length (m)	Order No. 6775
2 Core + CPC	1.5	Red	100	990481
2 Core + CPC	1.5	White	100	990494
2 Core + CPC	2.5	Red	100	990504
2 Core + CPC	2.5	White	100	990517
4 Core + CPC	1.5	Red	100	990643
4 Core + CPC	1.5	White	100	990656

* CPC = Bare Conductor.



Nexans NX ALSECURE - Multicore Fire Resistant Cable

Suitable for use with Fire Alarm systems and Fire detection.

BS5839-1:2002 Cat. Standard.

Voltage rating 300 / 500V.

No. of Cores	Size (mm)	Sheath Colours	Drum Length (m)	Order No. 5247
2 Core + CPC	1.5	Red	100	990295
2 Core + CPC	1.5	White	100	990305
2 Core + CPC	2.5	Red	100	990318
2 Core + CPC	2.5	White	100	990321
4 Core + CPC	1.5	Red	100	990334
4 Core + CPC	1.5	White	100	990347

* CPC = Bare Conductor.



Prysmian LSXH Screened Cable LSOH

Lightweight screened wiring system for use in areas where elimination of smoke and fume is mandatory.

Voltage rating 300 / 500V.

No. of Cores	Size (mm)	Sheath Colours	Drum Length (m)	Order No. 6775
2 Core + CPC	1.5	White	100	990290
3 Core + CPC	1.5	White	100	990339
4 Core + CPC	2.5	White	100	990371

* CPC = Bare Conductor.

Cable & Cable Accessories

DATA CABLE



Internal Telephone Cables

Solid copper cores.

Description	Colour	Ref No.	Code
2 Pair Cable	White	CW130802	9302
3 Pair Cable	White	CW130803	9303
4 Pair Cable	White	CW130804	9304
6 Pair Cable	White	CW130806	9306

Intruder Alarm Cable

Stranded copper cores.

Description	Colour	Ref No.	Code
4 Core	White	MM1787	9904
6 Core	White	MM1162	9906
8 Core	White	MM1729	9908
12 Core	White	MM1941	9912

Coax Cable

Suitable for CCTV, TV, Video and Satellite.

Description	Colour	Ref No.	Code
TV Coax	Brown	COAXB	7010
TV Coax	White	COAXW	7010
Satellite Coax	Black	CT100	3379
CCTV Coax	Black	RG59	7012

Cat 5E Cable

Complies with EIA/TIA 568A, ISO11801 and EN50173.

No. of Pairs	Colour	Box Length (m)	Order No.
Unscreened Twisted Pair - PVC			
4	Grey	305	6001
Unscreened Twisted Pair - LSF			
4	Grey	305	6002
4	Violet	305	6003
Foil Screened Twisted Pair			
4	Grey	305	6004

Cat 6 Cable

Complies with ISO11801.

No. of Pairs	Colour	Box Length (m)	Order No.
Unscreened Twisted Pair - PVC			
4	Grey	305	6028
Unscreened Twisted Pair - LSF			
4	Violet	305	6027

Antiference

digital

Satellite Coax Cable Cube

Cable Cube - the innovative new way to store, carry & dispense cable. Benchmarked double screened coaxial cable. Unique 300m drum on its own free running dispenser. Metre marked from 299m to 1m. Foam dielectric & PET film reduce moisture ingress. Available in black.

Description	Colour	Box Length (m)	Order No.
Cable Cube	Black	300	990715

Cable & Cable Accessories

CONDUCTOR SLEEVING, CONNECTOR STRIPS & CABLE TIES



CABLE ACCESSORIES

SECTOR

Conductor Sleeving

Supplied as 100 metre coils.

Bore (mm)	Colour	Ref No.	Order No. 0001
2	Blue	SSBL2	135958
3	Blue	SSBL3	135961
4	Blue	SSBL4	135974
6	Blue	SSBL6	135987
2	Brown	SSBR2	135990
3	Brown	SSBR3	136009
4	Brown	SSBR4	136012
6	Brown	SSBR6	136025
2	Grey	SSGR2	136038
3	Grey	SSGR3	136041
4	Grey	SSGR4	136054
6	Grey	SSGR6	136067
2	Green / Yellow	SSGY2	125117
3	Green / Yellow	SSGY3	125120
4	Green / Yellow	SSGY4	125133
6	Green / Yellow	SSGY6	125146
2	Black	SSB2	125023
3	Black	SSB3	125036
4	Black	SSB4	125049
6	Black	SSB6	125052

SECTOR

Connector Strips

Manufactured from self-extinguishing flame proof polypropylene.

Maximum working temperature 125°C.

Conforms to low voltage directive 73/23/eec & 93/68/eec.

Tested to BS EN 60 998-1 & BS EN 60 998-2-1 CE marked.

12 way connector strips easily separated with captive screws.

Brass insert has deep lead in to allow easy cable entry.

Rating (Amp)	No. of Ways	Ref No.	Order No. 0001
2.5	12	SCS2.5	991396
5	12	SCS5	004652
15	12	SCS15	004759
30	12	SCS30	004856

SECTOR

Cable Ties - Stainless Steel Roller-Ball

AISI 316 stainless steel.

Unique ball-locking mechanism for quick and easy installation.

Corrosion resistant.

Tool for tensioning and cutting of tail leaving a flush fitting.

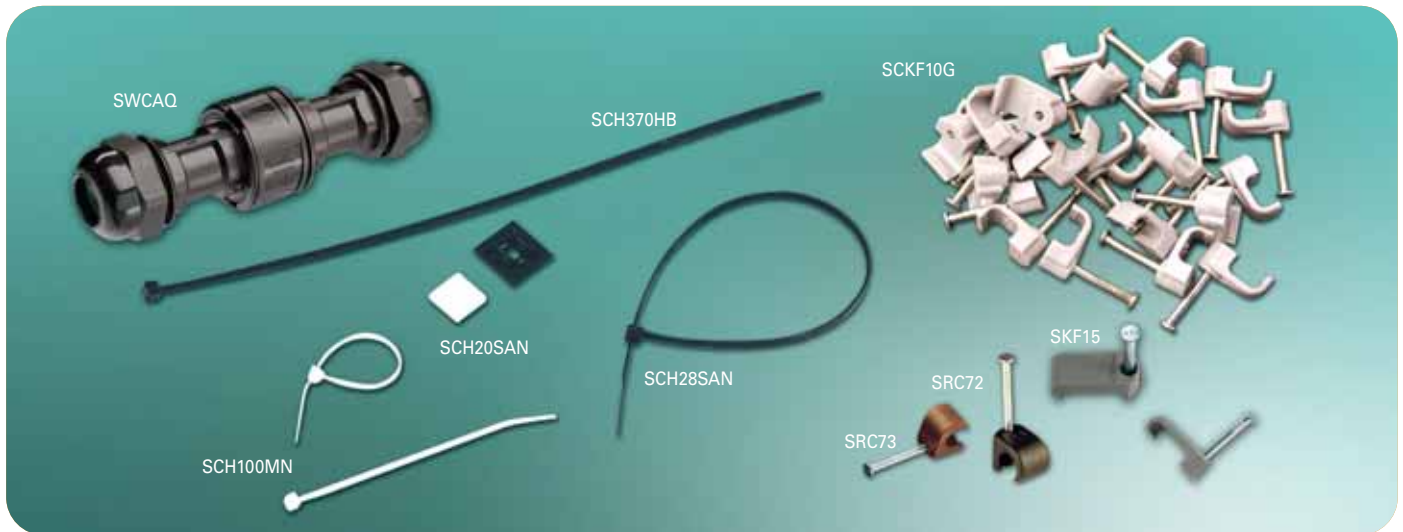
100 pack size.

Length (mm)	Width (mm)	Ref No.	Order No. 0001
201	4.6	SSSTRB201-4.6	139530
266	4.6	SSSTRB266-4.6	139543
362	4.6	SSSTRB362-4.6	139556
521	7.9	SSSTRB521-7.9	139569
Cutting tool for stainless steel ties			SSSTCT1 139572

SECTOR *plus*

Cable & Cable Accessories

CABLE TIES & CABLE CLIPS



SECTOR

Cable Ties - Nylon

100 pack size.

Nylon 6/6 material.

UL94 /V2 flammability rating.

Mil spec 23190 E.

Suitable for -40°C to +85°C.

Length (mm)	Width (mm)	Ref No.	Order No. 0001
Black			
100	2.5	SCH100MB	998182
140	3.6	SCH140IB	998205
200	4.8	SCH200SB	998221
300	4.8	SCH300SB	998247
370	4.8	SCH370SB	998263
370	7.8	SCH370HB	998276
Natural			
100	2.5	SCH100MN	998195
140	3.6	SCH140IN	998218
200	4.8	SCH200SN	998234
300	4.8	SCH300SN	998250
370	4.8	SCH370SN	133811
Small Cable Tie Mount		SCH20SAN	998289
Large Cable Tie Mount		SCH28SAN	998292
Red			
200	4.8	SCH200SR	136423
300	4.8	SCH300SR	136436

SECTOR

Inline Waterproof Connector

Inline waterproof connector.

IP67 3 pole, 240v for cable diameter 5-9mm.

Suitable for most domestic, commercial and industrial applications.

Description	Ref No.	Order No. 0001
Cable Cube	SWCAQ	146002

SECTOR

Flexi Cable Clips

Flexible design to grip cable before fixing for fast installation of flat cable, nail manufactured from the highest quality steel and clip moulded from quality virgin material.

Can withstand high impact plus extremes of heat and cold -40°C to +80°C.

Packed in 100's.

Cable Size (mm ²)	Colour	Ref No.	Order No. 0001
Flexi Twin & Earth Cable Clips - Grey			
1.0 - 1.5		SKF15	992010
1.5 - 2.5		SKF25	991972
4.0 - 6.0		SKF60	992036
Flexi Round Cable Clips			
5 - 7	White	SRC57	998344
7 - 10	White	SRC71	998357
7 - 10	Black	SRC72	139174
7 - 10	Brown	SRC73	139187

SECTOR

Cable Clips - Standard

Highest quality steel and plastic construction.

Moulded in quality virgin material.

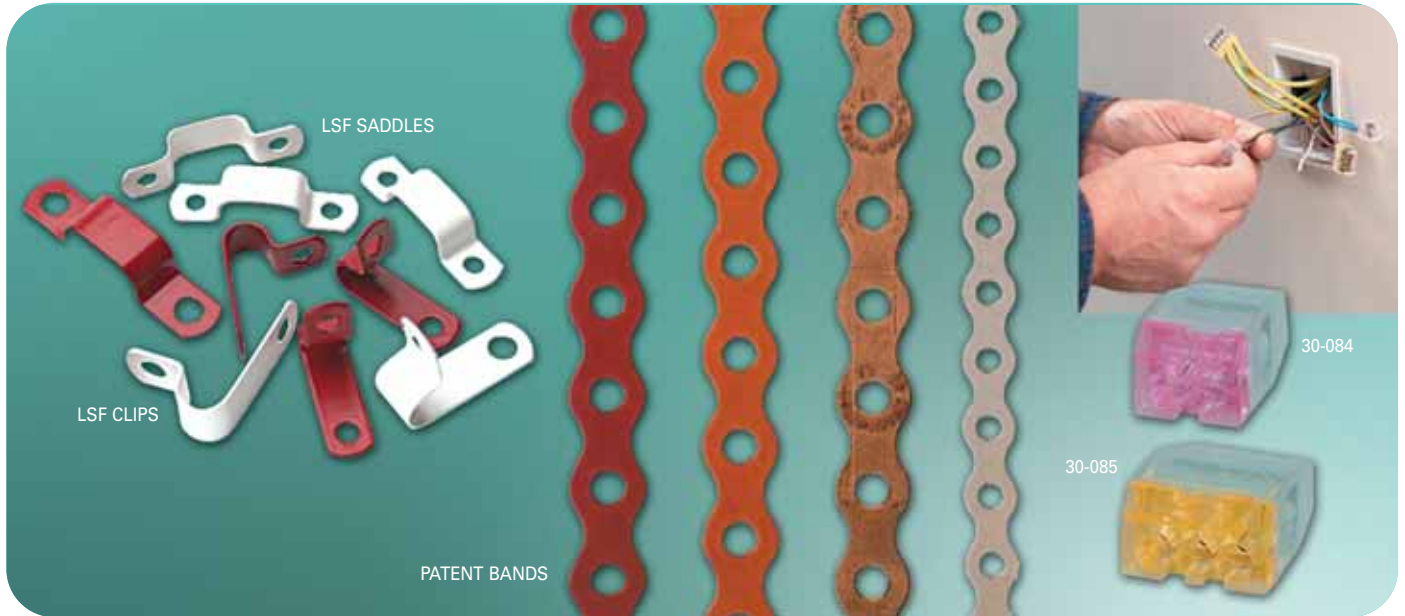
Can withstand high impact plus extremes of heat and cold -40°C to +80°C.

Packed in 100's.

Cable Size (mm ²)	Ref No.	Order No. 0001
Twin & Earth Clips - Grey		
1	SCKF10G	117950
1.5	SCKF15G	117976
2.5	SCKF25G	117992
4	SCKF40G	118014
6	SCKF60G	118030
Round Clips - White		
5 - 6	SCRC56W	118056
6 - 7	SCRC67W	118069
7 - 8	SCRC78W	118072
9 - 11	SCRC911W	118085

Cable & Cable Accessories

CABLE CLIPS



LSF Fire Performance Cable Clips

Clips for soft skin fire performance cables.

Copper clips with LSF coating - complies to BS 476 Part 7, BS 6853, BS 4066, UL 94 vertical burn test.

Packed in 50's. Other Sizes available.

Cable Dia. (mm)	Colour	Ref No.	Order No. 8700
LSF Clips			
7.0 - 7.4	Red	64LSF28R	001071
7.0 - 7.4	White	64LSF28W	001084
7.5 - 7.9	Red	64LSF30R	001110
7.5 - 7.9	White	64LSF30W	001123
8.0 - 8.4	Red	64LSF32R	001136
8.0 - 8.4	White	64LSF32W	001149
8.5 - 9.2	Red	64LSF34R	001152
8.5 - 9.2	White	64LSF34W	001165
9.3 - 10.0	Red	64LSF37R	001178
9.3 - 10.0	White	64LSF37W	001181

LSF Saddles

7.0 - 7.7	Red	64LSF302R	001259
7.0 - 7.7	White	64LSF302W	001262
7.8 - 9.0	Red	64LSF342R	001275
7.8 - 9.0	White	64LSF342W	001327



Patent All Round Band

The Original versatile all round patent band with hidden inner strength covered by LSF coating as standard.

Pre-drilled in either black or galvanised. 10 metre coils.

Diameter (mm)	Colour	Ref No.	Order No. 7990
12	Black	ARB12/BL	000061
12	Galv	ARB12/GA	000126
17	Black	ARB17/BL	000249
17	Galv	ARB17/GA	000304



Push In Wire Connectors

No twist connection.

Low insertion force for fast and easy application.

Clear shell makes connection easy to inspect.

European rating - EN60998-1 and EN60998-2-2

Description	Colour	Ref No.	Order No. 4261	Pk Qty
2 Way	Red	30-084	000010	100
3 Way	Orange	30-085	000023	100
4 Way	Yellow	30-086	000036	100
5 Way	Grey	30-087	000049	50
6 Way	Blue	30-088	000052	50
8 Way	Black	30-090	000065	50

Cable & Cable Accessories

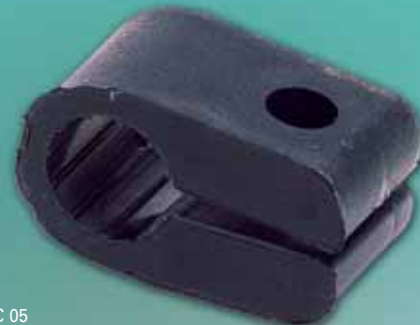
INSULATING TAPE & CABLE CLEATS

SAT1920 G/Y

SAT1920 BLU

SAT1920 RED

SAT1920 BLK



SCC 05

SECTOR

Insulation Tape

Manufactured to BS3887 or BS3924.

Flame Retardant PVC.

19mm wide.

Colours: red, green / yellow, green, black, blue, yellow, white, grey, brown.

Colour	Ref No.	Order No. 0001
20 Metre Reel		
Black	SAT1920 BLK	991024
Blue	SAT1920 BLU	991011
Brown	SAT1920 BRN	991079
Green / Yellow	SAT1920 G/Y	991341
Green	SAT1920 GRN	991053
Grey	SAT1920 GRY	134454
Red	SAT1920 RED	991338
White	SAT1920 WHI	991066
Yellow	SAT1920 YEL	991008

33 Metre Reel

Black	SAT1933 BLK	991419
Blue	SAT1933 BLU	991406
Brown	SAT1933 BRN	991451
Green / Yellow	SAT1933 G/Y	991435
Green	SAT1933 GRN	991422
Grey	SAT1933 GRY	994173
Red	SAT1933 RED	991370
White	SAT1933 WHI	991448
Yellow	SAT1933 YEL	991383

SECTOR

Cable Cleats - Black Polythene

High strength.

Corrosion and impact resistant.

UV light resistant.

Stable at temperatures -35°C to +105°C.

Cleat sizes up to 400mm available from your local Rexel Senate branch.

Cable Dia. Max. (mm)	Pack Qty	Ref No.	Order No. 0001
12.7	50	SCC 05	991736
15.2	50	SCC 06	991749
17.8	50	SCC 07	991752
20.3	50	SCC 08	991765
22.8	50	SCC 09	991778
25.4	50	SCC 10	991781
27.9	20	SCC 11	991794
30.5	20	SCC 12	991817
35.5	20	SCC 14	991820
40.6	20	SCC 16	991833
45.7	20	SCC 18	991846
50.8	20	SCC 20	991859

Cable Cleats Selector Chart

Conductor Size mm ²	Copper Conductor Wire Armoured Cores				Aluminium Conductor Wire Armoured Cores				No. of Cores	MULTICORE CABLE Conductor Size		
	1	2	3	4	1	2	3	4		1.5mm ²	2.5mm ²	4mm ²
1.5	-	5	6	6	-	-	-	-	5	6	7	8
2.5	-	6	6	6	-	-	-	-	-	-	-	-
4	-	6	7	7	-	-	-	-	7	6	8	9
6	-	7	7	8	-	-	-	-	-	-	-	-
10	-	8	8	9	-	-	-	-	10	8	9	11
16	-	8	8	9	-	9	9	10	-	-	-	-
25 Shaped	-	9	10	11	-	10	11	12	12	8	9	11
25 Circular	-	10	11	12	-	10	11	12	12	8	9	11
35 Shaped	-	10	11	12	-	10	11	12	-	-	-	-
35 Circular	-	12	12	14	-	10	11	12	-	-	-	-
50	7	11	12	14	9	10	12	14	19	9	11	12
70	8	12	14	16	9	12	14	16	-	-	-	-
95	9	14	16	18	9	16	16	18	27	11	14	16
120	10	16	16	20	10	-	16	20	-	-	-	-
150	11	16	18	-	12	-	18	20	37	12	14	-
185	12	18	20	-	12	-	20	-	-	-	-	-
240	14	20	-	-	14	-	-	-	48	14	16	-
300	16	-	-	-	14	-	-	-	-	-	-	-

Selection charts are intended as a guide only, it is strongly recommended that the actual cable dimensions are checked to ensure a correct selection.

Cable & Cable Accessories

NYLON & ARMoured GLANDS



SECTOR

Nylon Compression Glands - 20mm

Nylon 6.6 material with Nitrile Rubber Bushes.
Temperature range -2°C to +100°C.

For use with unarmoured cables.

Size range between 7 - 13mm diameter.

Complete with locknuts. Pack of 10 glands and locknuts.

Available in white, red and black.

Gland Size	Colour	Ref No.	Order No. 0001
Small	Black	SC251B	111600
Small	Red	SC251R	111613
Small	White	SC251W	111590
Large	Black	SC252B	111639
Large	Red	SC252R	112269
Large	White	SC252W	111626

SECTOR

Nylon Cable Glands Skin Top Type - 20mm

IP68 watertight and easy to use.

UL and VDE approved.

Pack of 10 glands and locknuts.

Gland	Colour Size	Ref No.	Order No. 0001
Small	Black	SC251DB	112654
Small	White	SC251DW	112641
Small	Red	SC251DR	145647
Large	Black	SC252DB	112670
Large	White	SC252DW	112667
Large	Red	SC252DR	145650

Armoured Gland Selector chart

Nominal Conductor Area mm ²	1 2 3 4 5 7 10 12 19 27 37 48											
	1.5	-	20S	20S	20S	20S	20S	20	20	25	25	32
2.5	-	20S	20S	20S	20	20	25	25	25	32	40	40
4	-	20S	20S	20	20	20	25	25	32	40	-	-
6	-	20	20	20	-	-	-	-	-	-	-	-
10	-	20	20	25	-	-	-	-	-	-	-	-
16	-	25	25	25	-	-	-	-	-	-	-	-
25	-	25	25	32	-	-	-	-	-	-	-	-
35	-	25	32	32	-	-	-	-	-	-	-	-
50	20	32	32	40	-	-	-	-	-	-	-	-
70	25	32	40	40	-	-	-	-	-	-	-	-
95	25	40	40	50/50S	-	-	-	-	-	-	-	-
120	25	40	50/50S	50/50S	-	-	-	-	-	-	-	-
150	32	50	50/50S	63	-	-	-	-	-	-	-	-
185	32	50/50S	50	63/63S	-	-	-	-	-	-	-	-
240	40	50	63/63S	63	-	-	-	-	-	-	-	-
300	40	63/63S	63/63S	75/75S	-	-	-	-	-	-	-	-
400	50	63/63S	75/75S	75	-	-	-	-	-	-	-	-

Selection charts are intended as a guide only, it is strongly recommended that the actual cable dimensions are checked to ensure a correct selection.

SECTOR

Armoured Cable Glands - Brass

Suitable for use with PVC/SWA/PVC 600/1000 volt cable conforming to BS6346.

Indoors (BW) to BS6121.

Outdoors (CW) to BS6121.

Packs contain gland(s), locknut(s), earth tag(s) and shroud(s).

Glands Per Pack	Ref No.	Order No. 0001
BW Range - Indoor		
2	SL20SBW	117109
2	SL20BW	117675
2	SL25BW	117688
2	SL32BW	117691
1	SL40BW	117701
1	SL50BW	117714
1	SL63BW	117727

CW Range - Outdoor

2	SL20SCW	117730
2	SL20CW	117743
2	SL25CW	117756
2	SL32CW	117769
1	SL40CW	117772
1	SL50CW	117785
1	SL63CW	117798

LSF Cable Glands

BW Range - Indoor

Glands per Pack	Ref No.	Order No. 0001
2	SL20SBWLSF	146468
2	SL20BWLSF	146471
2	SL25BWLSF	146484
2	SL32BWLSF	146497
1	SL40BWLSF	146507
1	SL50BWLSF	146510
1	SL63BWLSF	146523

CW Range - Outdoor

Glands per Pack	Ref No.	Order No. 0001
2	SL20SCWLSF	146536
2	SL20CWLSF	146549
2	SL25CWLSF	146552
2	SL32CWLSF	146565
1	SL40CWLSF	146578
1	SL50CWLSF	146581
1	SL63CWLSF	146597

Cable & Cable Accessories

COPPER TUBE TERMINALS & ACCESSORIES, CABLE ACCESSORY TOOLS



SEK1016

SCT 25 - 8

SCT 10BS - SCT 35BS

SECTOR

Copper Tube Terminals

BS4579 Part 1. Manufactured from soft drawn pure copper tube.

Terminals have flared entry and are fully annealed to ensure electrical and mechanical strength.

Packed in 100's (*70mm & 95mm Packed in 50's).

A full range of copper tube terminals and splices up to 400mm are available, please ask at your local Rexel Senate branch.

Cable Size (mm ²)	Stud Size (mm)	Ref No.	Order No. 0001
10	6	SCT 10 - 6	996016
10	8	SCT 10 - 8	996029
16	6	SCT 16 - 6	996032
16	8	SCT 16 - 8	996045
16	10	SCT 16 -10	996058
25	6	SCT 25 - 6	996061
25	8	SCT 25 - 8	996074
25	10	SCT 25 -10	996087
35	8	SCT 35 - 8	996090
35	10	SCT 35 -10	996100
50	8	SCT 50 - 8	996113
50	10	SCT 50 -10	996126
50	12	SCT 50 -12	996139
70*	8	SCT 70 - 8	996142
70*	10	SCT 70 -10	996155
70*	12	SCT 70 -12	996168
95*	10	SCT 95 -10	996171
95*	12	SCT 95 -12	996184

SECTOR

Copper Tube Butt Splice

Ideal for joining cables. Butt to ensure equal insertion of cable. Copper tube BS 2871/C106. Electro tinned to BS 1872. Larger sizes available.

Cable Size (mm ²)	Pack Qty.	Ref No.	Order No. 0001
10	100	SCT 10BS	139585
16	100	SCT 16BS	139598
25	50	SCT 25BS	139608
35	50	SCT 35BS	139611
50	25	SCT 50BS	139624
70	25	SCT 70BS	139637
95	10	SCT 95BS	139640

SECTOR

Heavy Duty Terminal Kit

Supplied with quality hand ratchet crimp tool and selection of 10mm² & 16mm² copper tube terminals.

Description	Ref No.	Order No. 0001
Heavy Duty Terminal Kit	SEK1016	139653

Cable & Cable Accessories

PRE-INSULATED TERMINALS & CABLE ACCESSORY TOOLS



SECTOR

Pre-Insulated Terminals

BS4579 Part 1, UL and CSA Approved.

Packed in 100's.

Cable Size mm ²	Dim. mm/ Colour	Ref No.	Order No. 0001
----------------------------	-----------------	---------	----------------

Forks

0.5 - 1.5	3.7 Red	SIF1.5-3.7	995224
1.5 - 2.5	3.7 Blue	SIF2.5-3.7	995020
4 - 6	5.3 Yellow	SIF6-5.3	995033

Push On's

0.5 - 1.5	6.3 Red	SIPO1.5-6.3	995046
1.5 - 2.5	6.3 Blue	SIPO2.5-6.3	995059
4 - 6	6.3 Yellow	SIPO6-6.3	995062

Pins

0.5 - 1.5	9.5 Red	SIP1.5-9.5	995567
1.5 - 2.5	9.5 Blue	SIP2.5-9.5	995570
4 - 6	14 Yellow	SIP6-14	995583

Rings

0.5 - 1.5	3.7 Red	SIR1.5-3.7	995114
0.5 - 1.5	4.3 Red	SIR1.5-4.3	995127
0.5 - 1.5	5.3 Red	SIR1.5-5.3	995130
0.5 - 1.5	6.5 Red	SIR1.5-6.5	995143
1.5 - 2.5	3.7 Blue	SIR2.5-3.7	995156
1.5 - 2.5	4.3 Blue	SIR2.5-4.3	995169
1.5 - 2.5	5.3 Blue	SIR2.5-5.3	995172
1.5 - 2.5	6.5 Blue	SIR2.5-6.5	995185
4 - 6	4.3 Yellow	SIR6-4.3	995198
4 - 6	5.3 Yellow	SIR6-5.3	995208
4 - 6	6.5 Yellow	SIR6-6.5	995211

Splices

0.5 - 1.5	Red	SIS1.5-1.5	995075
1.5 - 2.5	Blue	SIS2.5-2.5	995541
4 - 6	Yellow	SIS6.6	995554

SECTOR

Cable and Wire Stripper

Self-adjusting wire stripper for single core cable 0.2 - 6mm².

Easy adjustment to ensure correct stripping length.

Single point entry for fast and efficient use.

Complete with cable cutting blade.

Cable Range (mm ²)	Ref No.	Order No. 0001
0.2 - 6.0	SWS026	139666

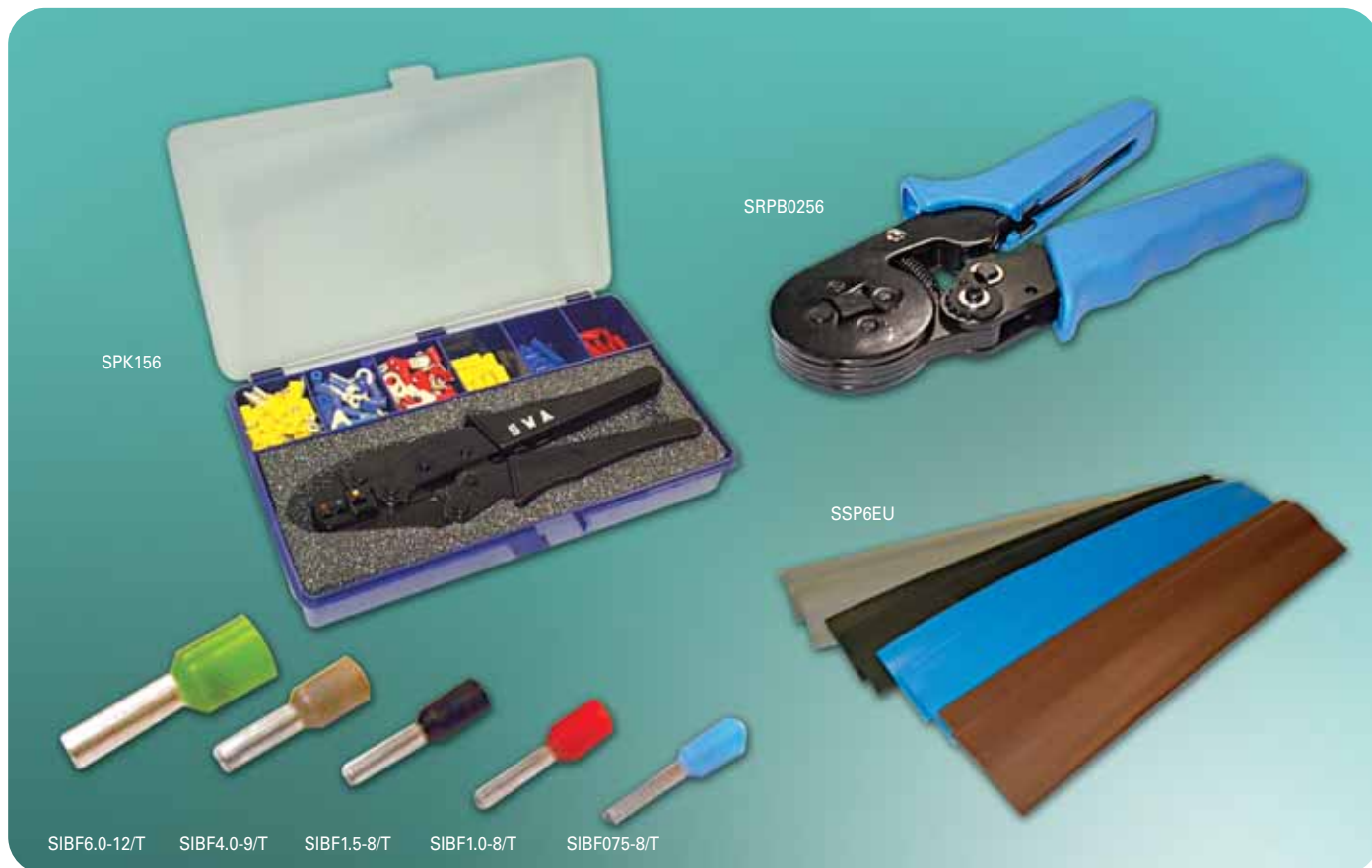
SECTOR

Compression Tools

Description	Ref No.	Order No. 0001
Multi-Purpose Crimping Tool	SKT1	995596
Precision Ratchet Tool	SKT15	993213

Cable & Cable Accessories

BOOT LACE FERRULES & HEATSHRINK PACKS



SECTOR

Pre-Insulated Crimp Terminal Kit C/W Hand Ratchet Tool

Supplied with quality hand ratchet crimp tool.
Varied selection of crimp terminals 0.5 - 6mm².

Description	Ref No.	Order No. 0001
Pre-Insulated Terminal Kit	SPK156	139679

SECTOR

Boot Lace Ferrules

German and French colour coding available.
Approved to DIN 46228/4.
Larger sizes available. Twin entry available.
Packed in 100's.

Cable Size (mm ²)	Pin Length (mm) / Colour	Ref No.	Order No. 0001
0.5	8 / White	SIBF0.5-8/T	139682
0.75	8 / Blue	SIBF075-8/T	139695
1.0	8 / Red	SIBF1.0-8/T	139705
1.5	8 / Black	SIBF1.5-8/T	139718
2.5	8 / Grey	SIBF2.5-8/T	139721
4.0	9 / Orange	SIBF4.0-9/T	139734
6.0	12 / Green	SIBF6.0-12/T	139747

SECTOR

Boot Lace Ferrule Crimping Tool

For easy crimping of bootlace ferrules from 0.25 - 6.0mm².
Ratchet action.
Unique single hole loading.
Self-adjusting to various sizes.
Compact and convenient.

Description	Ref No.	Order No. 0001
Ratchet Tool	SRPB0256	139750

SECTOR

Heatshrink Packs - 250mm long

Pack contains 4 harmonised wiring colours: Grey, Blue, Brown, Black.
Flexible, flame-retardant heat shrinkable polyolefin.
Ideal for insulating cable ends or through connectors.
Approved to UL224 /CSA C22.
2:1 shrink ratio.
Shrinkable with hot-air gun or naked flame.

Cable Size (mm)	No. of Lengths	Ref No.	Order No. 0001
6.4	4 Cols x 3	SSP6EU	139763
12.8	4 Cols x 3	SSP12EU	139776
19.1	4 Cols x 2	SSP19EU	139789
25.4	4 Cols x 2	SSP25EU	139792
38.0	4 Cols x 2	SSP38EU	139802

SECTOR *Plus*

Cable & Cable Accessories

CABLE JOINTS & MARKER TAPE



SECTOR

Armoured Cable Joints

Resin filled 600/1000V cable jointing kits.

Supplied with mechanical connector requiring no specialised tooling.

Features the Birkett Swishpak® mixing system.

Health and Safety Executive tested for safe use.

Manufactured and tested to UK Electricity Council C.79 & C.81.

Also available at your local Rexel Senate branch:

Cable joints up to 300mm.

Description	Ref No.	Order No.
		0001

Straight

Armoured Cable Joint	SCJ6	111749
Armoured Cable Joint	SCJ16	111752
Armoured Cable Joint	SCJ25	111765
Armoured Cable Joint	SCJ50	111778
Armoured Cable Joint	SCJ70	127733
Armoured Cable Joint	SCJ95	111781

Branch

Armoured Cable Joint	SBCJ10	127746
Armoured Cable Joint	SBCJ16	127759

SECTOR

Self Amalgamation Tape

Provides a strong weatherproof joint which insulates and prevents corrosion.

It gradually amalgamates (or flows into itself).

Simply stretch the tape and wrap around cables, pipes etc.

10m x 19mm tapes.

Description	Ref No.	Order No.
		0001

Tape	SAT1910	134522
------	---------	--------

Straight Cable Joints Selector chart

Size	Core	Kit	Size	Core	Kit
1.5mm	2	SCJ6	10.00mm	2	SCJ16
	3	SCJ6		3	SCJ16
	4	SCJ6		4	SCJ16
2.5mm	2	SCJ6	16.0mm	2	SCJ16
	3	SCJ6		3	SCJ25
	4	SCJ6		4	SCJ25
4.0mm	2	SCJ6	25.00mm	2	SCJ25
	3	SCJ6		3	SCJ25
	4	SCJ16		4	SCJ50
6.0mm	2	SCJ6	35.0mm	2	SCJ50
	3	SCJ16		3	SCJ50
	4	SCJ16		4	SCJ50
			50.0mm	2	SCJ50
				3	SCJ50

Branch Cable Joints Selector chart

Size	Core	Kit
1.5 x 2, 3, 4 Core	1.5 x 2, 3 Core	BCJ10
2.5 x 2, 3, 4 Core	Up 2.5 2, 3 Core	BCJ10
4.0 x 2, 3, 4 Core	Up 4.0 2, 3 Core	BCJ10
6.0 x 2, 3, 4 Core	Up 6.0 2, 3 Core	BCJ10
6.0 4 Core	Up 6.0 2, 3 Core	BCJ10
10.0 2 Core	Up to 10.0 2 Core	BCJ10
10.0 3, 4 Core	Up to 10.0 2, 3 Core	BCJ16
16.0 2 Core	Up to 16.0 2 Core	BCJ16

Selection charts are intended as a guide only, it is strongly recommended that the actual cable dimensions are checked to ensure a correct selection.

SECTOR

Underground Marker Tape

150mm wide, 365m length.

Description	Ref No.	Order No.
		0001
Underground Marker Tape	SSEUM1	127762

Cable & Cable Accessories

SAFETY SIGNS & LABELS



SAFETY SIGNS & LABELS



Safety Signs and Labels

Any size, type and quantity of Label, Sign or Legend Plate can be ordered. Either engraved, printed, flexible or rigid. Ask at your local Rexel Senate branch for details of our express service.

Description	Size (mm)	Pack Quantity	Colour	Ref No.	Order No. 0001
Test and Inspection Labels					
Pass Test Labels Small	35 x 15	250	Green on White Matt	SEIS4925OR	135123
Pass Test Labels Large	42.5 x 32.5	250	Green on White Matt	SEIS4825OR	135152
Pass Test Labels Large	42.5 x 32.5	50	Green on White Matt	SEIS2650SA	128075
Pass Test Labels Small	35 x 15	50	Green on White Matt	SEIS1750SA	134412
Flexible Self Adhesive Vinyl Labels On A Roll					
Danger 230 Volts	75 x 25	250	Yellow / Black on White	SEIS2010OR	134386
Danger 400 Volts	75 x 25	250	Yellow / Black on White	SEIS2810OR	135181
Mixed Cable Notice	130 x 60	100	Yellow / Black on White	SEIS5910OR	135194
Harmonised Cable Notice	130 x 60	100	Yellow / Black on White	SEIS6110OR	139394
Periodic Inspection Label	130 x 60	100	Black / Red on Matt White	SEIS5410OR	139404
Flexible Self Adhesive Vinyl Labels					
Danger 230 Volts	75 x 25	10	Yellow / Black on White	SEIS2110SA	128033
Danger 400 Volts	75 x 25	10	Yellow / Black on White	SEIS2210SA	128046
Mixed Cable Notice	130 x 60	10	Yellow / Black on White	SEIS5810SA	135110
Periodic Inspection Label	130 x 60	10	Black / Red on Matt White	SEIS5610SA	134315
Mixed Cable Junction Box Label	80 x 30 & 50 Dia.	5 Sheets	Black on Yellow	SEIS6300SA	135136
Safety Electrical Connection	75 x 25	10	Black / Green on Yellow	SEIS0610SA	127953
Harmonised Cable Notice	130 x 60	10	Yellow / Black on White	SEIS6010SA	135204
R.C.D Test Label	130 x 60	5	Black / Red on Matt White	SEIS5710SA	134438
Warning More Than One Point of Isolation	75 x 75	10	Yellow / Black on White	SEIS6810SA	139417
Warning Isolate Elsewhere	75 x 75	10	Yellow / Black on White	SEIS3110SA	139420
Colour Coded & Lettered Phase Discs (40)	25 Dia.	5 Sheets	Red Yellow Blue Black Brown Grey	SEIS6500SA	139433
Colour Coded & Lettered Phase Markers	32 Sets per Sheet	4 Sheets	Red Yellow Blue Black Brown Grey	SEIS6200SA	135217
Rigid Self Adhesive Vinyl					
Danger 230 Volts	75 x 75	5	Yellow / Black on White	SEIS1705RP	13509
Danger 400 Volts	75 x 75	5	Yellow / Black on White	SEIS2505RP	135149
Rigid PVC					
Safety Electrical Connection	80 x 35	5	Black / Green on Yellow	SEIS0605RP	134409
Rigid Self Adhesive PVC					
Electric Shock First Aid Notice	280 x 420	5	Blue / Green on White	SEIS2401RP	134441
Rigid Engraved					
Danger 230 Volts	75 x 25	5	Yellow / Black on White	SEIS1105EN	127982
Danger 400 Volts	75 x 25	5	Yellow / Black on White	SEIS1205EN	127995