

## PULL UP WITH WISHBONE SPRUNG CONTROLLERS

### PREMIER MOD T8 & TCL

A high quality, trimmed luminaire compatible with a wide variety of ceiling types, including exposed tee, metal pan, spring tee and plaster board.



IP20



#### PREMIER

Part No.	Description	Code
<b>600x600</b>		PD/SL/C2
FMPR662TCL55HF*	2x55W TCL	7/6/4752
FMPR663HF*	3x18W T8	7/6/4752
FMPR664HF*	4x18W T8	7/6/4752
<b>1200x600</b>		
FMPR1263HF*	3x36W T8	7/6/4762
FMPR1264HF*	4x36W T8	7/6/4762
<b>Other Sizes</b>		
FMPR1232HF*	1200x300 2x36W T8	6756
FMPR1532HF*	1500x300 2x58W T8	6766
FMPR1832HF*	1800x300 2x70W T8	7766

\*Please add the following options to the Part No.:

#### CONTROL GEAR VARIANTS

Suffix:

HF	=	High Frequency As Standard
HFR	=	Dimmable (Analogue 1-10V)
SD	=	Switch Dim
DDC	=	Digital Dimming Control
AH	=	Air Handling (litres per second required)
E3	=	3 Hour Maintained Emergency Pack

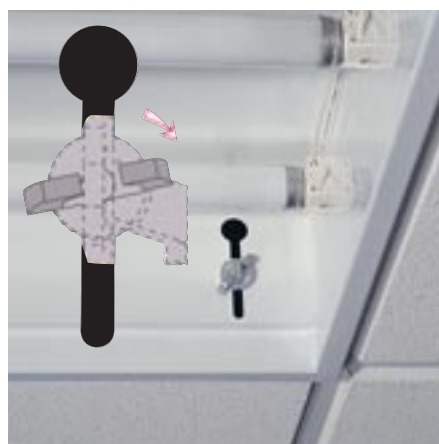
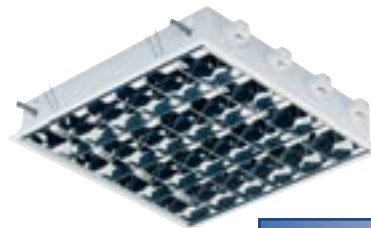
#### LOUVRES & PANELS

Suffix:

C2	=	CIBSE LG3(2001) Cat2 65° Louvre
SL	=	Standard Ribbed Crossblade Low Brightness Louvre
TPA	=	TP(a) Fire Rated Prismatic Panel

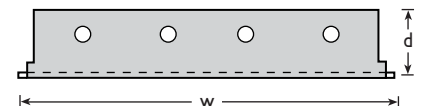
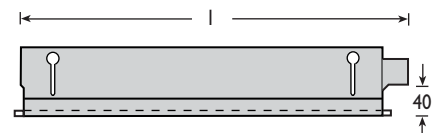
#### EXAMPLE:

FMPR664HFRE3C2 = 600x600 4x18W  
High Frequency Dimmable Emergency  
with CIBSE LG3(2001) C2 65° Louvre



#### SPECIFICATION

- Requires Lamps
- Particularly well suited to installations with restricted void depths
- The use of fully adjustable side arm support brackets allow the luminaire to be drawn up to the underside of the ceiling
- Available with a range of controllers retained by wishbone springs for ease of installation and maintenance
- Welded sides and finished trims provide a seamless union between the ceiling and luminaire
- Further lamp options are available with HF Gear and TCL 34W and 40W lamps in 600x600 bodies only



#### DIMENSION TABLE (mm):

	L	W	D
600x600	620	597	103
600x600TCL	597	597	125
1200x300	1230	297	103
1200x600	1230	597	103
1500x300	1530	297	103
1800x300	1797	297	103

- Nominal Cut-out Sizes for Solid Ceiling
  - 300mm = 280mm
  - 600mm = 580mm
  - 1200mm = 1180mm
  - 1500mm = 1480mm
  - 1800mm = 1780mm
- 150mm minimum ceiling void required

#### IDEAL FOR

- General Office Areas
- Boardrooms
- Conference Centres
- Lecture/Study Rooms and Libraries
- Reception & Circulation Areas
- Universities, Schools & Colleges
- Corridors
- Print and Proofing Areas
- Retail
- Call Centres

HFR dimming & proximity sensors see pages 132-139

