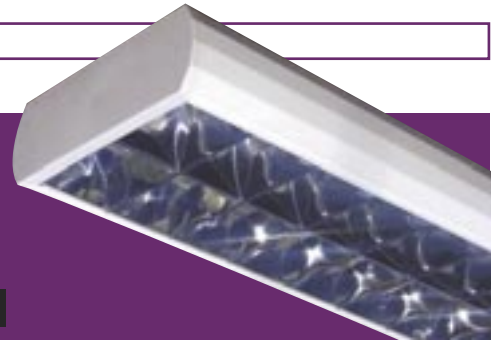


## LOUVRED LUMINAIRES



### SLEEK T8

A versatile surface mounted linear luminaire, with attractive low profile body, white plastic end caps and many louver and lamp options.



**IP20**

#### SLEEK SWITCH START WITH CAT 2 LOUVRE

Part No.	Description	Code
<b>Single Lamp</b>		
FMSLK621C2	600 2ft 1X18W	4708
FMSLK1221C2	1200 4ft 1X36W	4700
FMSLK1521C2	1500 5ft 1X58W	4702
FMSLK1821C2	1800 6ft 1X70W	4704
<b>Single Lamp with Integral Emergency</b>		
FMSLK1221E3C2	1200 4ft 1X36W	4710
FMSLK1521E3C2	1500 5ft 1X58W	4712
FMSLK1821E3C2	1800 6ft 1X70W	4714
<b>Twin Lamp</b>		
FMSLK622C2	600 2ft 2X18W	4709
FMSLK1222C2	1200 4ft 2X36W	4701
FMSLK1522C2	1500 5ft 2X58W	4703
FMSLK1822C2	1800 6ft 2X70W	4705
<b>Twin Lamp with Integral Emergency</b>		
FMSLK1222E3C2	1200 4ft 2X36W	4711
FMSLK1522E3C2	1500 5ft 2X58W	4713
FMSLK1822E3C2	1800 6ft 2X70W	4715

Suffix  
 Control Gear Options  
 HF = High Frequency Electronic  
 HFR = High Frequency Dimming (Analogue 1-10V)  
 DDC = Digital Dimming Control  
 SD = Switch Dim  
 E3 = Integral 3 hour emergency (not 2ft)

Controller Options  
 C2 = Cat 2 louver as standard  
 SL = Standard low brightness louver  
 PD = TP(b) Prismatic Diffuser (not emergency)  
 TPA = TP(a) Fire Rated Diffuser

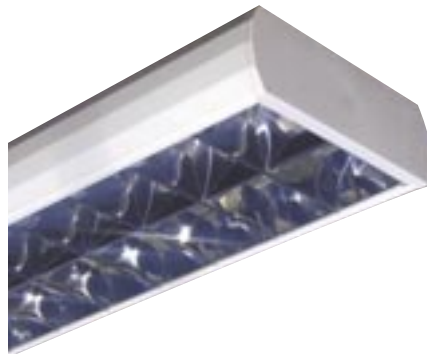
#### INDIRECT SLEEK (backlight/uplight) WITH CAT 2 LOUVRE

Part No.	Description	Code
<b>Single Lamp</b>		
FMSLKID1521HFC2	1500 5ft 1X58W HF	4702
FMSLKID1821HFC2	1800 6ft 1X70W HF	4704
<b>Twin Lamp</b>		
FMSLKID1522HFC2	1500 5ft 2X58W HF	4703
FMSLKID1822HFC2	1800 6ft 2X70W HF	4705

Full range of sizes, gear and louvres also available

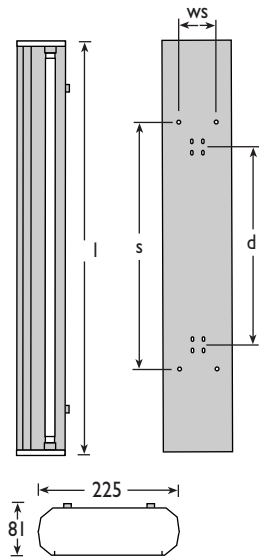
#### WIRE SUSPENSION KIT

Part No.	Description	Code
FMSUST8/KIT4	T8 4x3m Adjustable Wire Suspension	4740



#### SPECIFICATION

- Requires T8 fluorescent tubes
- Profiled white steel body style complemented with durable plastic end-caps
- A comprehensive range of 'lift and tilt' controllers include CIBSE LG3(2001) C2 65° louvres, standard low brightness louvres and prismatic panels in TP(b) & TP(a)
- Body profile allows for continuous run mounting
- A combination of BESA entries and suspension points allows this luminaire to be mounted on or from most ceilings with the wire suspension kit accessory



#### DIMENSION TABLE (mm):

	l	d	s	ws
		BESA	Susp	Susp
2ft T8	666	300	300	120
4ft T8	1276	600	750	120
5ft T8	1576	600	900	120
6ft T8	1840	600	900	120

#### IDEAL FOR

- Offices, store rooms
- Conference/board rooms
- Sport and leisure areas, indoor sports areas
- Schools
- Corridors
- Retail

■ Duo recessed modulares see page 70