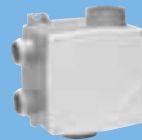


# Ventilation



4" Axial & Low Profile Fans 192-193



Whole House Ventilation 198



6" Axial & Centrifugal Fans 194



Ducting & Accessories 198



4" & 6" Ducting & Accessories 195



Cooling Products 199



Commercial Sweep Fans 196



MVHR - Heat Recovery 200



Line & Shower Fans 197

VENTILATION

## 4" AXIAL & LOW PROFILE FANS

SFAN100AT



SFAN100S

SFAN100S/LVLP



SFAN100SLP



### 4" (100mm) Range - IP44

4" (100mm) Cloakroom / Bathroom Fan.  
For external wall and window installations. \*  
100mm spigot suitable for flexible and rigid ducting.  
Can be ducted up to 3m.  
\*SFAN4WINKIT required for window installations,  
SFAN4WALKIT required for wall installations.

Description	Part No.
100mm Fan - Standard	<b>SFAN100S</b>
100mm Fan - Pull Cord	<b>SFAN100P</b>
100mm Fan - Timer	<b>SFAN100T</b>
100mm Fan - Humidity / Pull Cord	<b>SFAN100HP</b>

### 4" (100mm) Automatic Shutter Range - IP44

4" (100mm) Cloakroom / Bathroom Fan.  
For external wall and window installations. \*  
100mm spigot suitable for flexible and rigid ducting.  
Can be ducted up to 3m.  
\*SFAN4WINKIT required for window installations,  
SFAN4WALKIT required for wall installations.

Description	Part No.
100mm Fan - Timer	<b>SFAN100AT</b>
100mm Fan - Humidity / Pull Cord	<b>SFAN100AHP</b>

### 4" (100mm) SELV - Low Voltage - Low Profile Range - IPX7

Ideal for bathrooms, shower cubicles and wet rooms.  
100mm spigot suitable for flexible and rigid ducting.  
For external wall installations.

Description	Part No.
100mm Fan SELV - Standard (White)	<b>SFAN100S/LVLP</b>
100mm Fan SELV - Timer (White)	<b>SFAN100T/LVLP</b>
100mm Fan SELV - Humidity (White)	<b>SFAN100H/LVLP</b>

### 4" (100mm) Low Profile Range - IP44

4" (100mm) Cloakroom / Bathroom Fan.  
For external wall installations.  
100mm spigot suitable for flexible and rigid ducting.  
Can be ducted up to 3m.  
Integral backdraft shutters.

Description	Part No.
100mm Fan - Standard (White)	<b>SFAN100SLP</b>
100mm Fan - Timer (White)	<b>SFAN100TLP</b>
100mm Fan - Humidity (White)	<b>SFAN100HLP</b>
100mm Fan - Timer (Chrome)	<b>SFAN100TLPC</b>

For all fan accessories & ducting see page 195

## 4" FANS



SFAN100SFLAT



SFAN100TFLAT/A



A new range of 4" extractor fans which allow the units to blend in with the surrounding decor.

### 4" (100mm) Standard Fan

4" standard fan suitable for bathrooms/cloakrooms. Designed for wall or ceiling mounting. Complies with 2006 building regs. Extracts 20 litres per second. Long life motor. Unique tile design, with only 30mm protrusion. IP24 rated. Speed: 2400rpm. 20 Watts loading.

Description	Part No.
100mm Standard Fan	<b>SFAN100SFLAT</b>

### 4" (100mm) Timer Fan

4" timer fan suitable for bathrooms/cloakrooms. Designed for wall or ceiling mounting. Complies with 2006 building regs. Extracts 20 litres per second. Long life motor. Unique tile design, with only 30mm protrusion. IP24 rated. Speed: 2400rpm. 20 Watts loading.

Description	Part No.
100mm Standard Fan with Timer	<b>SFAN100TFLAT</b>

### 4" (100mm) Humidistat Fan

4" humidistat fan suitable for bathrooms/cloakrooms. Designed for wall or ceiling mounting. Complies with 2006 building regs. Extracts 20 litres per second. Long life motor. Unique tile design, with only 30mm protrusion. IP24 rated. Speed: 2400rpm. 20 Watts loading.

Description	Part No.
100mm Standard Fan with Humidistat	<b>SFAN100HFLAT</b>

### 4" (100mm) Timer Fan with Aluminium Cover

4" timer fan suitable for bathrooms/cloakrooms. Supplied with unique aluminium cover to enhance the decor anywhere. Designed for wall or ceiling mounting. Complies with 2006 building regs. Extracts 20 litres per second. Long life motor. Unique tile design, with only 30mm protrusion. IP24 rated. Speed: 2400rpm. 20 Watts loading.

Description	Part No.
100mm Standard Fan with Timer & Cover	<b>SFAN100TFLAT/A</b>

**SFAN140AP**

**SFAN140SLP**

**SFAN140S**

**SFAN100C+**


### 6" (140mm) Range - IP34

6" (140mm) Kitchen / Utility Fan.  
 For external wall and window installations.\*  
 140mm spigot suitable for flexible and rigid ducting.  
 Can be ducted up to 3m.  
 \*SFAN6WINKIT required for window installations,  
 SFAN6WALKIT required for wall installations.

Description	Part No.
140mm Fan - Standard	<b>SFAN140S</b>
140mm Fan (Auto Shutters) - Pull Cord	<b>SFAN140AP</b>
140mm Fan (Auto Shutters) - Timer	<b>SFAN140AT</b>
140mm Fan (Auto Shutters) - Humidity	<b>SFAN140AHP</b>

### 4" (100mm) High Pressure Range - IP44

4" (100mm) High Pressure Cloakroom / Bathroom Fan.  
 For external wall and ceiling mounted installations.  
 100mm spigot suitable for flexible and rigid ducting.  
 Can be ducted up to 10m.  
 Supplied with semi-recessing kit.

Description	Part No.
100mm CF Fan	<b>SFAN100C+</b>
100mm CF Fan - Timer	<b>SFAN100CT+</b>
100mm CF Fan - Humidity - Pull Cord	<b>SFAN100CHP+</b>

For all fan accessories & ducting see page 195

### 6" (140mm) Low Profile Range - IPX4

6" (140mm) Kitchen / Utility Fan.  
 For external wall installations.  
 140mm spigot suitable for flexible and rigid ducting.  
 Can be ducted up to 3m.

Description	Part No.
140mm Fan - Standard	<b>SFAN140SLP</b>
140mm Fan - Timer	<b>SFAN140TLP</b>
140mm Fan - Humidity	<b>SFAN140HLP</b>

## 4" & 6" DUCTING & ACCESSORIES



### Flexible Ducting

Description	Part No.
<b>4" (100mm) Flexible Ducting</b>	
100mm PVC Flexible Duct 3m	<b>SFANDUCT100-3</b>
100mm PVC Flexible Duct 6m	<b>SFANDUCT100-6</b>
100mm PVC Flexible Duct 10m	<b>SFANDUCT100-10</b>
100mm PVC Flexible Duct 15m	<b>SFANDUCT100-15</b>
<b>6" (140mm) Flexible Ducting</b>	
140mm PVC Flexible Duct 3m	<b>SFANDUCT140-3</b>
140mm PVC Flexible Duct 6m	<b>SFANDUCT140-6</b>

### Standard Wall Grilles

Description	Part No.
<b>4" (100mm) Standard Wall Grilles</b>	
100mm External Wall Grille - White	<b>SFANGRILL4-W</b>
100mm External Wall Grille - Brown	<b>SFANGRILL4-B</b>
100mm External Wall Grille - Terracotta	<b>SFANGRILL4-T</b>
<b>6" (140mm) Standard Wall Grilles</b>	
140mm External Wall Grille - White	<b>SFANGRILL6-W</b>
140mm External Wall Grille - Brown	<b>SFANGRILL6-B</b>
140mm External Wall Grille - Terracotta	<b>SFANGRILL6-T</b>

### Wall/Window Kits

Description	Part No.
<b>4" (100mm) Wall/Window Kits</b>	
100mm Wall Kit	<b>SFAN4WALKIT</b>
100mm Window Kit	<b>SFAN4WINKIT</b>
<b>6" (140mm) Wall/Window Kits</b>	
140mm Wall Kit	<b>SFAN6WALKIT</b>
140mm Window Kit	<b>SFAN6WINKIT</b>

### Gravity Wall Grilles

Description	Part No.
<b>4" (100mm) Gravity Wall Grilles</b>	
100mm External Wall Grille - White	<b>SFANGRAV4-W</b>
100mm External Wall Grille - Brown	<b>SFANGRAV4-B</b>
100mm External Wall Grille - Terracotta	<b>SFANGRAV4-T</b>
<b>6" (140mm) Gravity Wall Grilles</b>	
140mm External Wall Grille - White	<b>SFANGRAV6-W</b>
140mm External Wall Grille - Brown	<b>SFANGRAV6-B</b>
140mm External Wall Grille - Terracotta	<b>SFANGRAV6-T</b>



SCOM12FG



SCOM9FG



SCOMRC



SFANSWEEPCONT



SFANSWEEP900



### Commercial Range

Ideal for offices, clubs, restaurants and commercial kitchens.  
Available in fixed grille or automatic shutter versions.  
For wall, panel and window installations.\*  
Includes wall liner and external grille.  
\*Window Kit required for window installations.

Description	Part No.
<b>9" Commercial Range</b>	
9" (230mm) Fan (Automatic Shutters)	<b>SCOM9AS</b>
9" (230mm) Fan (Fixed Grille)	<b>SCOM9FG</b>
9" (230mm) Window Kit	<b>SCOM9WK</b>
<b>12" Commercial Range</b>	
12" (300mm) Fan (Automatic Shutters)	<b>SCOM12AS</b>
12" (300mm) Fan (Fixed Grille)	<b>SCOM12FG</b>
12" (300mm) Window Kit	<b>SCOM12WK</b>
<b>Accessories</b>	
2 Speed Reversible Controller	<b>SCOMRC</b>

### Sweep Fan Range

Will provide effective and positive air movement to improve working environments during summer months.  
Suitable for winter use to stop warm air rising.  
Up to 3 fans may be connected to a single controller.

Description	Part No.
900mm Sweep Fan	<b>SFANSWEEP900</b>
1200mm Sweep Fan	<b>SFANSWEEP1200</b>
Reversible Sweep Fan Controller	<b>SFANSWEEPCONT</b>

*Selection of the correct fan and siting it in the correct position is important to achieve optimum performance, and to comply with building regulations. Technical assistance is available through all our branches.*

## IN LINE & SHOWER FANS



### High Power Shower Fan Range

An in-line mixed flow extractor fan for duct mounting.  
 Ideal as a 'high power in-line shower fan' replacement.  
 Can be mounted anywhere along the length of air duct.  
 Can be installed horizontally or vertically, against walls, on ceilings, behind false ceiling or on any flat surface.  
 Supplied complete with mounting cradle.  
 Compact overall dimensions.  
 Two speeds.  
 Adjustable timer\*.  
 Double insulated.

Description	Part No.
100mm Mixed Flow In-Line Extract Fan	<b>SFAN100SFX</b>
100mm Mixed Flow In-Line Extract Fan - Timer*	<b>SFAN100SFXT</b>

### 4" (100mm) Shower Fan Kits

Ideal for bathrooms, shower cubicles and wet rooms.  
 Includes 3m 100mm dia flexible ducting, inlet grille, soffit grille and duct ties.

Description	Part No.
100mm In-Line Shower Fan Kit	<b>SFAN100SF</b>
100mm In-Line Shower Fan Kit - Timer	<b>SFAN100SFT</b>

### 4" (100mm) Shower Fan / Light Kits

Ideal for bathrooms, shower cubicles and wet rooms.  
 Unique combination of fan and SELV lamp.  
 Includes 3m 100mm dia flexible ducting, inlet grille, soffit grille, transformer, duct ties and 50W 50mm 12V dichroic lamp.  
 White grille and chrome grille supplied.

Description	Part No.
<b>Shower Fan / Light Kits Chrome/White</b>	
100mm In-Line Shower Fan / Light Kit	<b>SFAN100LSF/CW</b>
100mm In-Line Shower Fan / Light Kit - Timer	<b>SFAN100LSFT/CW</b>



SFANDUCT42-1M



SFANDUCT42-2M



SFANDUCT4-035M



SFANDUCT42CLP



SFANDUCT42C



SFANDUCT42FB



SFANDUCT64RED



SFANDUCT42VB



SFANDUCT424E



SFANDUCT424ME



SFANDUCT4CT



SFANDUCT42FT



SFAN42BRICK



SFAN42GRILLE



SFANDUCT4YB



SFANDUCTADAPT



SFANDUCT42WP



SFANDUCT42F-3M



SGT5050

### Whole House Vent Kit

Eliminates the need for multiple installations of conventional fans.  
 Lower power usage than single extract units.  
 Less penetration in external fabric of building.  
 Quiet operation.  
 Keeps air moving to eliminate airborne condensation.  
 Aids compliance of Parts F & L of the Building Regulations.  
 NB, Any room having a water tap is considered to be a 'Wet Area'.

A typical kit for a house with 3 wet areas comprises:  
 1 x SFANHOUSEVENT (inc 4 x 80mm internal grilles)  
 1 x SFAN5WALKIT Wall Kit  
 1 x SFANDUCT125-6 6m 125mm flexible ducting  
 3 x SFANDUCT80-6 6m 80mm flexible ducting  
 8 x SFANWORM125 60-125mm worm drive clips

And for a house with 4 wet areas, just add a further:  
 1 x SFANDUCT80-6 6m 80mm flexible ducting  
 2 x SFANWORM125 60-125mm worm drive clips

Description	Part No.
Whole House Vent Fan	<b>SFANHOUSEVENT</b>
80mm Internal Grille	<b>SFANGRILL80IN</b>
Wall Kit 5" (125mm)	<b>SFAN5WALKIT</b>
Duct 5" 6m Length	<b>SFANDUCT125-6</b>
Duct 80mm 6m Length	<b>SFANDUCT80-6</b>
60mm-125mm Worm Drive Clip	<b>SFANWORM125</b>

### 4" x 2" (110mm x 54mm) Flat Duct & Accessories

Suitable for a wide range of applications including offices, shops, hotels restaurants and hospitals.

Description	Part No.
4" x 2" Flat Duct 1m	<b>SFANDUCT42-1M</b>
4" x 2" Flat Duct 2m	<b>SFANDUCT42-2M</b>
4" x 2" Flat Duct Clips	<b>SFANDUCT42CLP</b>
4" x 2" Flat Duct Connector	<b>SFANDUCT42C</b>
4" x 2" Flat Duct Flat Bend	<b>SFANDUCT42FB</b>
4" x 2" Flat Duct Vertical Bend	<b>SFANDUCT42VB</b>
4" x 2" Flat Duct 4" Female Elbow	<b>SFANDUCT424FE</b>
4" x 2" Flat Duct 4" Male Elbow	<b>SFANDUCT424ME</b>
4" x 2" Flat Duct Flat Tee	<b>SFANDUCT42FT</b>
4" x 2" Flat Duct Airbrick	<b>SFAN42BRICK</b>
4" x 2" Flat Duct Airbrick Grille	<b>SFAN42GRILLE</b>
4" x 2" Flat Duct - 4" Round Adaptor	<b>SFANDUCTADAPT</b>
4" x 2" Flat Duct Wall Plate	<b>SFANDUCT42WP</b>
4" x 2" Flexible Flat Duct	<b>SFANDUCT42F-3M</b>

### Duct Accessories

Description	Part No.
4" Round Duct 350mm	<b>SFANDUCT4-035M</b>
4" Condensation Trap	<b>SFANDUCT4CT</b>
4" Y Branch	<b>SFANDUCT4YB</b>
6" - 4" Reducer	<b>SFANDUCT64RED</b>

### Gaffer Tape

For general purpose sealing and binding ideal for heating and ventilation ducting applications.  
 Silver / Grey tape 50mm x 50m reel.

Description	Part No.
Gaffer Tape	<b>SGT5050</b>

## COOLING PRODUCTS



SFANCOOL16P



SFANCOOL9DW



SFANCOOL12DW



SFANCOOL12WR

SFANCOOLTFTMIN



SFANCOOLTFT



SFANCOOLAC9



SFANCOOLAC12

COOLING PRODUCTS



### Cooling Range

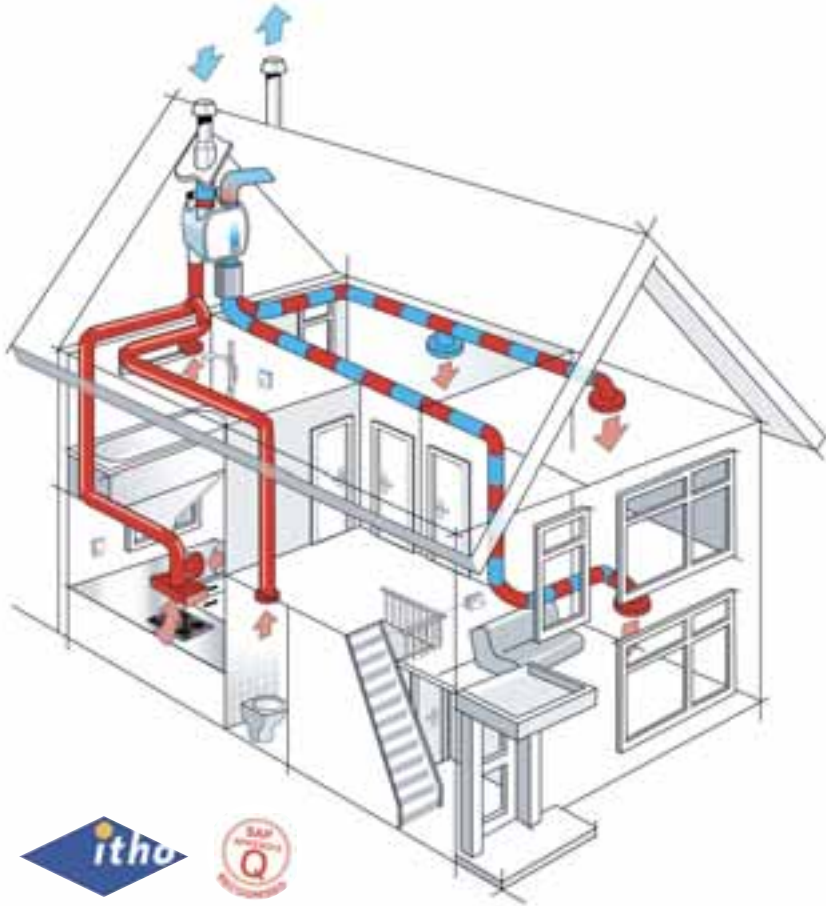
Description	Part No.
12" Desk Fan (Suitable For Wall Mount)	<b>SFANCOOL12DW</b>
9" Desk Fan (Suitable For Wall Mount)	<b>SFANCOOL9DW</b>
12" Remote Controlled Wall Fan	<b>SFANCOOL12WR</b>
16" Desk Fan	<b>SFANCOOL16D</b>
16" Pedestal Fan	<b>SFANCOOL16P</b>
Tower Fan - Timer	<b>SFANCOOLTFT</b>
Tower Fan - Timer Mini	<b>SFANCOOLTFTMIN</b>

### Air Conditioner

*3 in 1 - Cooling, dehumidifying and fan. 24 hour timer. Microprocessor control.*

Description	Part No.
Mobile Air Conditioning Unit (7000btu)	<b>SFANCOOLAC7</b>
Mobile Air Conditioning Unit (9000btu)	<b>SFANCOOLAC9</b>
Mobile Air Conditioning Unit (12000btu)	<b>SFANCOOLAC12</b>

Due to seasonal fluctuation in the availability of these products, models offered may differ from those shown above.



## HRU ECO 4

The Appendix Q procedures apply specifically to MVHR systems. The Itho HRU ECO 4 has been designed to comply with the requirements set within the SAP Q and has excelled when independently tested by the BRE.



## Mechanical Ventilation With Heat Recovery

MVHR (Mechanical Ventilation with Heat Recovery) is a continuous balanced mechanical central supply and extract system that is positioned in a loft or cupboard space. The central unit extracts stale, humid air from the wet rooms of the dwelling whilst simultaneously introducing fresh, filtered air into the habitable rooms. Its integral heat exchanger recovers up to 91% of heat energy that would have otherwise been lost and transfers this to the incoming fresh air.

Under current building regulations, where new build properties need to be as energy efficient as possible, every new home has to have a SAP Q rating.

SAP is the Government's Standard Assessment Procedure for calculating the energy performance of dwellings. It is used to demonstrate compliance with building regulations - Part L (England and Wales).

- Fully compliant with System 4 of Part F (Means of Ventilation)
- Exceeds the Building Regulations Part L
- Complies with the improved standards as set in the Energy Saving Trust
- Suitable for new builds and high and low rise buildings.
- HRU ECO 4 whole-house MVHR system is SAP Q eligible.
- Fitted with a sophisticated synthetic heat exchanger offering maximum surface area for heat to be transferred.
- Quiet energy saving, electronically controlled DC motor for maximum efficiency.
- Can be easily installed into a loft space
- Controlled by state-of-the-art 3 speed wireless controllers plus a timed boost function.
- The HRU ECO 4 is supplied with G3 filters on both the fresh air inlet and the extract, and all HRU ECO 4 owners who register their product at [www.itho.co.uk](http://www.itho.co.uk) will be sent their first set of filters (choice of G4 or F7 grades) FREE of charge.
- Equipped with an integrated, fully automatic 100% Summer Bypass valve when the exchange of heat is no longer necessary, along with an automatic 100% Frost Protection device that adjusts the fan speed and combines fresh incoming air with the warmer air surrounding the unit to prevent the system from freezing.