



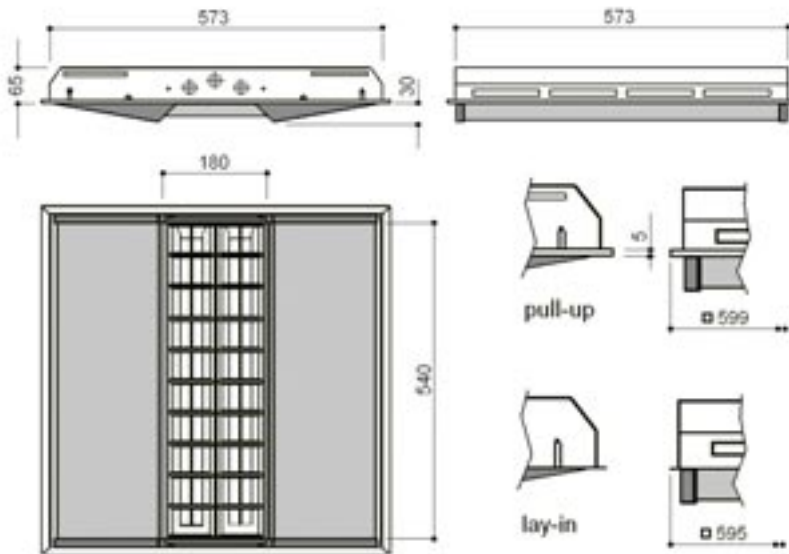
IP20

LG7 MOD & WALL

Fully enclosed semi-recessed luminaire with a choice of attachment, designed to aid compliance with the latest building regulations especially when used with its co-ordinating partner the LG7 Wall

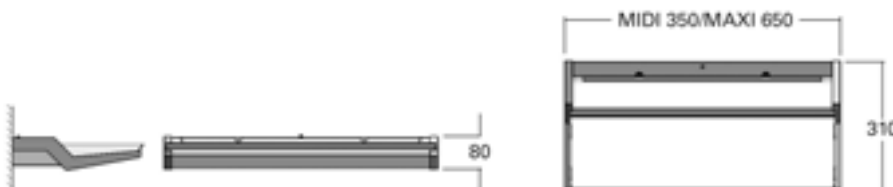
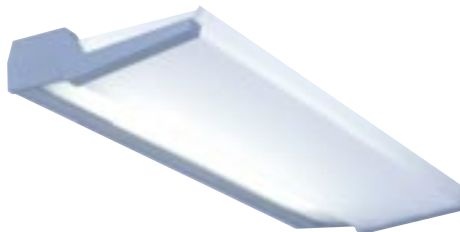
SPECIFICATION

- A high frequency modular light fitting designed to assist compliance to LG3 2001/LG7 and when used with the LG7 wall luminaire full compliance can be easily achieved with spectacular results
- T5 version Supplied with Colour 84 lamps
- TCL version requires lamps
- High quality powder coated steel body with high transmission surface etched polycarbonate sidedrop wings
- A choice of 2 central louvres, a micro prismatic panel or Semi Specular Cat 2 Louvre - that provides less glare than a standard specular Cat 2 Louvre
- Side ports allow some light to illuminate the ceiling



SPECIFICATION

- Bi-directional uplighter providing balanced light distribution with maximum performance
- Supplied with Colour 84 lamps
- High Frequency gear as standard
- Opal polycarbonate body with contrasting grey end caps
- Choice of 350 or 650mm body sizes with LED emergency available in the Maxi only



LG7 LAY-IN

Part No.	Description	Code
Semi Specular Cat2 Louvre		
LG7L240SSC2	2x40W TCL	5886
LG7L255SSC2	2x55W TCL	5886
LG7L314SSC2	3x14W T5 HE	5886
LG7L414SSC2	4x14W T5 HE	5886
Micro Prismatic Panel		
LG7L240MP	2x40W TCL	5884
LG7L255MP	2x55W TCL	5884
LG7L314MP	3x14W T5 HE	5884
LG7L414MP	4x14W T5 HE	5884

LG7 PULL-UP

Part No.	Description	Code
Semi Specular Cat2 Louvre		
LG7P240SSC2	2x40W TCL	5886
LG7P255SSC2	2x55W TCL	5886
LG7P314SSC2	3x14W T5 HE	5886
LG7P414SSC2	4x14W T5 HE	5886
Micro Prismatic Panel		
LG7P240MP	2x40W TCL	5884
LG7P255MP	2x55W TCL	5884
LG7P314MP	3x14W T5 HE	5884
LG7P414MP	4x14W T5 HE	5884

Suffix

E3 = 3 Hour integral Emergency

HFR = 1-10V Analogue Dimmable

SD = Switch Dim

DSI = Digital Dimming

LG7 WALL MIDI

Part No.	Description	Code
Compact Fluorescent		
LG7W226	2x26W TCDE	8500
LG7W124	1x24W TCL	8500

LG7 WALL MAXI

Part No.	Description	Code
Compact Fluorescent		
LG7W140	1x40W TCL	8500
LG7W155	1x55W TCL	8500
LG7W180	1x80w TCL	8500
Linear T5		
LG7WT5224	2x24w T5 Ho	8500

Suffix

E3 = LED Integral 3 hour Maintained (Maxi only)

HFR = 1-10V Analogue Dimmable

SD= Switch Dim

DSI=Digital Dimming

LG7 WALL ACCESSORIES

Part No.	Description
LG7WGC1	Glass cover for Midi
LG7WGC2	Glass cover for Maxi