

LED GROUND LIGHTS

MICRO / MINI / MIDI LED GROUND LIGHTS

Awesome LED power is the key here! These robust, stylish, top quality ground lights truly are a genuine alternative to traditional lights. Ideal for discreet lighting.



IP68



MICRO 1W GROUND LIGHT

Part No.	Description	Code
LED-GLR1S	1W 12° spot round	7850
LED-GLR1F	1W 45° flood round	7850
LED-GLQ1S	1W 12° spot square	7851
LED-GLQ1F	1W 45° flood square	7851
LED-GLT1S	1W 12° spot threaded	7850

Suffix: * available in round only

C/W = Cool White

W/W = Warm White*

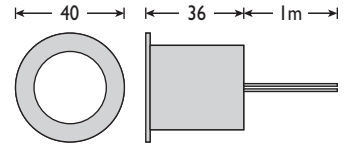
BLU = Blue

RED = Red*

AMB = Amber*

GRN = Green*

■ 1 to 9 per driver 350mA



MINI 1W GROUND LIGHT

Part No.	Description	Code
LED-GLR2F	1W 45° flood round	7852
LED-GLQ2F	1W 45° flood square	7853
LED-GLR2 SLVE	150x50mm dia. mounting sleeve	7860

Suffix: * available in round only

C/W = Cool White

W/W = Warm White*

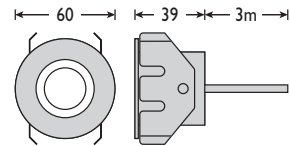
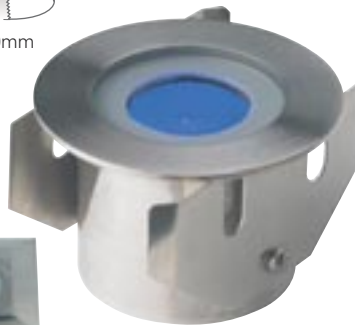
BLU = Blue

RED = Red*

AMB = Amber*

GRN = Green*

■ 1 to 9 per driver 350mA



MIDI 3 X 1W GROUND LIGHT

Part No.	Description	Code
LED-GLR3S	3x1W 12° spot round	7854
LED-GLR3F	3x1W 45° flood round	7854
LED-GLQ3S*	3x1W 45° spot square	7855
LED-GLQ3F*	3x1W 45° flood square	7855
LED-GLR3 SLVE	150x65mm dia. mounting sleeve	7860

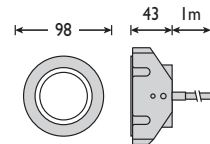
Suffix:

C/W = Cool White

W/W = Warm White

*BLU = Blue (square not available)

■ 1 to 3 per driver 350mA



SPECIFICATION

- Stainless steel (316) construction
- Toughened walkover clear glass
- Spring clips for secure fitting
- Installation sleeve available for use when mounting in soil, sand or concrete
- IP68 (Submersible to 2m water)
- Features anti-syphoning technology to reduce water ingress through cable

IDEAL FOR

- Gardens
- Leisure Centres & Retail Areas
- Bars, Pubs and Clubs
- Decking
- Hotels

■ Series LED drivers see pages 7 & 15

