

### FLUORESCENT WALLWASH

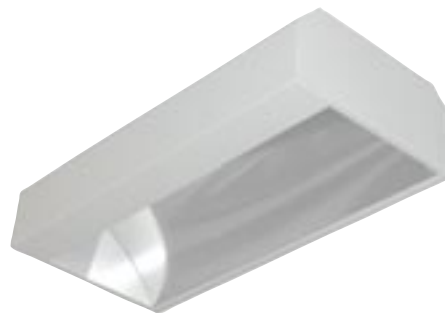
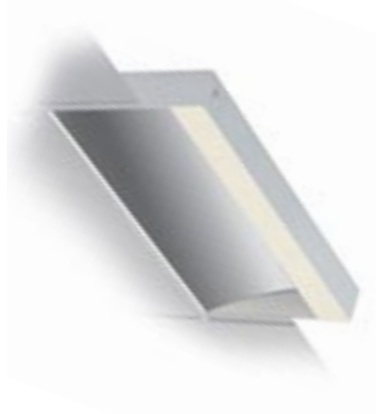
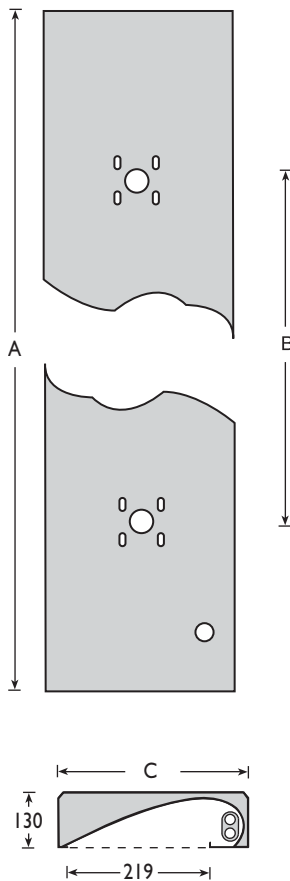


**IP20**

An asymmetric 'wall-wash' luminaire which offers both vertical and angular illumination. Offering three variants to enable mounting on almost any ceiling.

#### SPECIFICATION

- Requires TCL lamps
- T5 colour 840 lamps included
- IP20
- White Epoxy powder painted steel
- HF Gear as standard
- Emergency versions not available



#### LAY IN RECESSED

Part No.	Description	Code
<b>600 x 300</b>		
FMWWWR63140PLHF	1 x 40W TCL	5243
FMWWWR63155PLHF	1 x 55W TCL	5243
FMWWWRT5224	2 x 24W T5 HO	5243

\* Dimensions A = 595

<b>1200 x 300</b>		
FMWWWR123240PLHF	2 x 40W TCL	5242
FMWWWR123255PLHF	2 x 55W TCL	5242
FMWWWRT5254	2 x 54W T5 HO	5242

\* Dimensions A = 1195, C = 295

Ideal for 15mm and 25mm exposed T Ceilings

#### PULL UP RECESSED

Part No.	Description	Code
<b>600 x 300</b>		
FMWWWP63140PLHF	1 x 40W TCL	5243
FMWWWP63155PLHF	1 x 55W TCL	5243
FMWWWPT5224	2 x 24W T5 HO	5243

\* Dimensions A = 597

<b>1200 x 300</b>		
FMWWWP123240PLHF	2 x 40W TCL	5242
FMWWWP123255PLHF	2 x 55W TCL	5242
FMWWWPT5254	2 x 54W T5 HO	5243

\* Dimensions A = 1197, C = 297

Ideal for Plaster board, concealed grid as well as 15mm and 25mm exposed T Ceilings

#### SURFACE

Part No.	Description	Code
<b>600 x 300</b>		
FMWWW63140PLHF	1 x 40W TCL	5247
FMWWW63155PLHF	1 x 55W TCL	5247
FMWWWST5224	2 x 24W T5 HO	5247

\* Dimensions A = 584, B = 300

<b>1200 x 300</b>		
FMWWW123240PLHF	2x 40W TCL	5248
FMWWW123255PLHF	2x 55W TCL	5248
FMWWWST5254	2 x 54W T5 HO	5248

\* Dimensions A = 1184, B = 600, C = 286

Ideal for Surface mounting on any ceiling

#### IDEAL FOR

- Exhibition Halls
- Showrooms
- Retail
- Hotels, restaurants, Bars
- Wall washing
- Waiting Rooms
- Conference rooms
- Receptions

